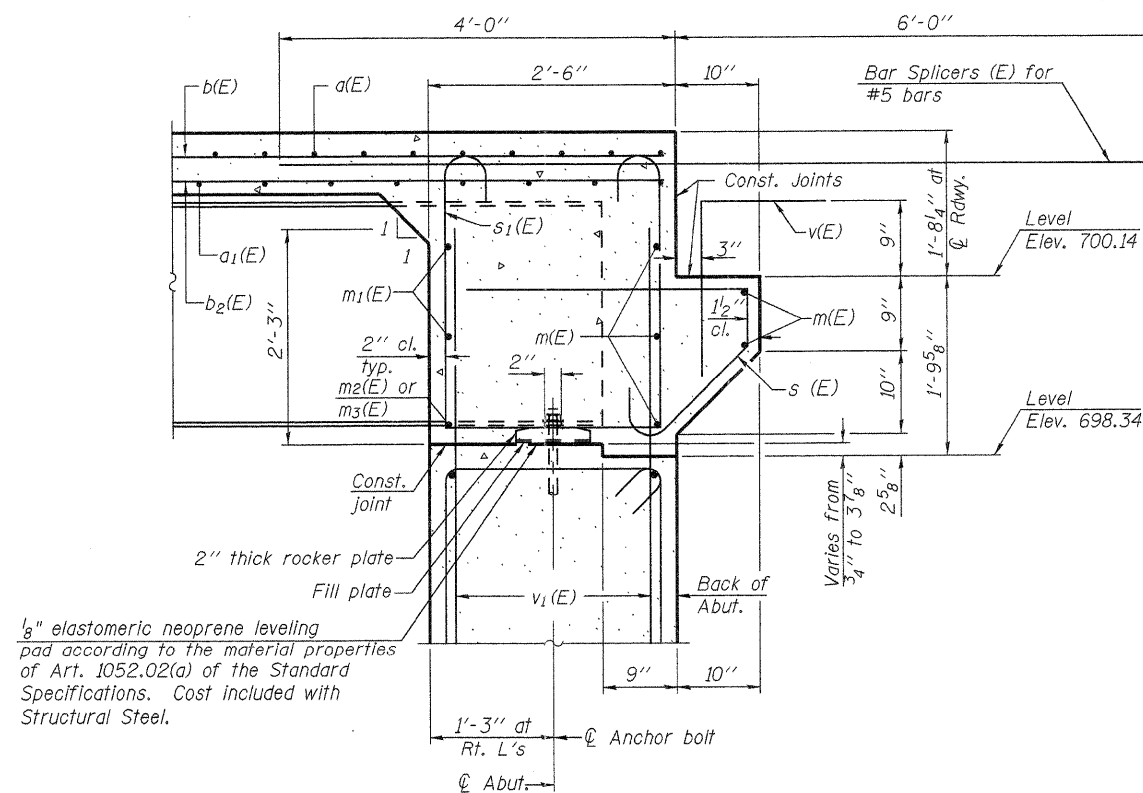


**DIAPHRAGM ELEVATION AT SOUTH ABUTMENT**  
(Looking South)

Notes:  
 Reinforcement bars in diaphragm are billed with superstructure on sheet 14 of 32.  
 Concrete in diaphragm is included with Concrete Superstructure on sheet 14 of 32.  
 For details of bars s(E) & s1(E) see sheet 14 of 32.  
 The s(E) and s1(E) bars shall be placed parallel to the beams. Spacing for these bars shall be at right angles to the beams.  
 For Bar Splicer details see sheet 28 of 32.

**MIN. BAR LAP**  
 #6 bar = 3'-4"



**SECTION A-A**

Dimensions at right angles to abutment.

SI-DSI

7-1-10



FILE NAME = 0520080-64057.DGN  
 USER NAME = S.A.P.  
 PLOT SCALE =  
 PLOT DATE = 08/10/11

DESIGNED - J.A.M.  
 CHECKED - A.R.K.  
 DRAWN - S.A.P.  
 CHECKED - J.A.M. & A.R.K.

REVISED -  
 REVISED -  
 REVISED -  
 REVISED -

**STATE OF ILLINOIS  
 DEPARTMENT OF TRANSPORTATION**

**SOUTH INTEGRAL ABUTMENT DIAPHRAGM DETAILS  
 STRUCTURE NO. 052-0080**

SHEET NO. 12 OF 32 SHEETS

F.A.P. RTE. 316	SECTION 102BR-5	COUNTY LEE	TOTAL SHEETS 216	SHEET NO. 113
			CONTRACT NO. 64057	
ILLINOIS FED. AID PROJECT				