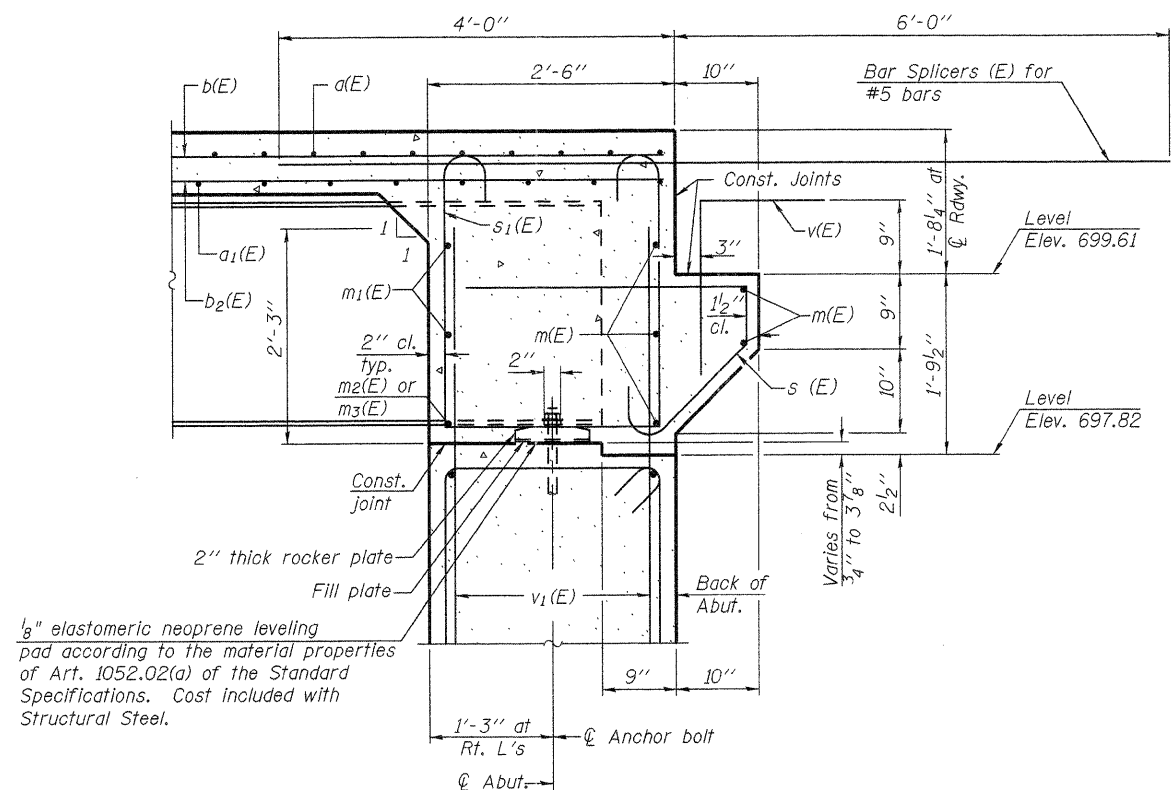


DIAPHRAGM ELEVATION AT NORTH ABUTMENT
(Looking North)

Notes:
 Reinforcement bars in diaphragm are billed with superstructure on sheet 14 of 32.
 Concrete in diaphragm is included with Concrete Superstructure on sheet 14 of 32.
 For details of bars s(E) & s1(E) see sheet 14 of 32.
 The s(E) and s1(E) bars shall be placed parallel to the beams. Spacing for these bars shall be at right angles to the beams.
 For Bar Splicer details see sheet 28 of 32.

MIN. BAR LAP
 #6 bar = 3'-4"



SECTION A-A

Dimensions at right angles to abutment.

SI-DSI

7-1-10



FILE NAME = 0520090-64057.DGN
 USER NAME = S.A.P.
 PLOT SCALE =
 PLOT DATE = 08/10/11

DESIGNED - J.A.M.
 CHECKED - A.R.K.
 DRAWN - S.A.P.
 CHECKED - J.A.M. & A.R.K.

REVISED -
 REVISED -
 REVISED -
 REVISED -

STATE OF ILLINOIS
DEPARTMENT OF TRANSPORTATION

NORTH INTEGRAL ABUTMENT DIAPHRAGM DETAILS
STRUCTURE NO. 052-0080

SHEET NO. 13 OF 32 SHEETS

F.A.P. RTE.	SECTION	COUNTY	TOTAL SHEETS	SHEET NO.
316	102BR-5	LEE	216	114
CONTRACT NO. 64057				
ILLINOIS FED. AID PROJECT				