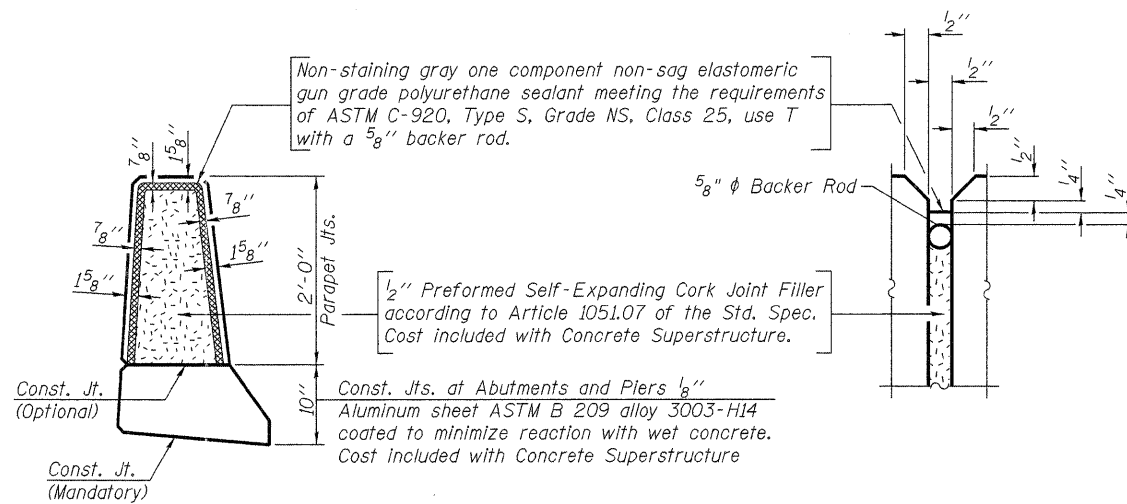


INSIDE ELEVATION OF PARAPET



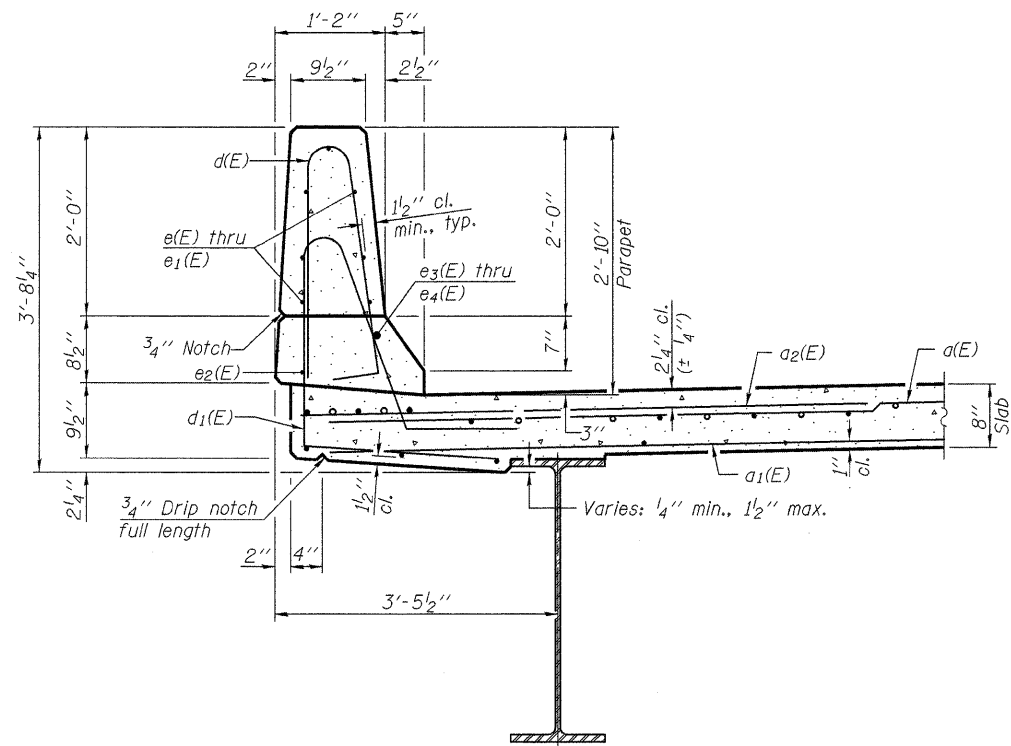
PARAPET JOINT DETAILS

MINIMUM BAR LAP
(Parapet)
#4 bar = 2'-0"
#8 bar = 5'-2"

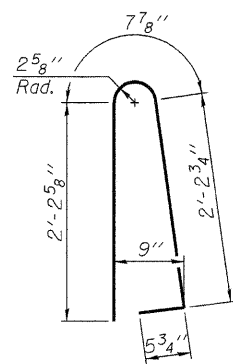
SUPERSTRUCTURE BILL OF MATERIAL

Bar	No.	Size	Length	Shape
a(E)	464	#5	21'-0"	—
a ₁ (E)	256	#5	20'-6"	—
a ₂ (E)	464	#6	6'-6"	—
b(E)	240	#5	24'-0"	—
b ₁ (E)	88	#6	28'-0"	—
b ₂ (E)	184	#5	29'-0"	—
d(E)	232	#5	5'-7"	⌋
d ₁ (E)	232	#5	8'-3"	⌋
e(E)	56	#4	15'-0"	—
e ₁ (E)	42	#4	14'-6"	—
e ₂ (E)	14	#4	16'-3"	—
e ₃ (E)	4	#8	30'-5"	—
e ₄ (E)	2	#8	44'-2"	—
m(E)	20	#6	21'-3"	—
m ₁ (E)	24	#6	9'-6"	—
m ₂ (E)	8	#6	6'-9"	—
m ₃ (E)	8	#6	3'-2"	—
s(E)	92	#5	5'-5"	⌋
s ₁ (E)	86	#4	8'-4"	⌋
v(E)	88	#5	4'-0"	⌋
Reinforcement Bars, Epoxy Coated			Pound	42,910
Concrete Superstructure			Cu. Yds.	163.5

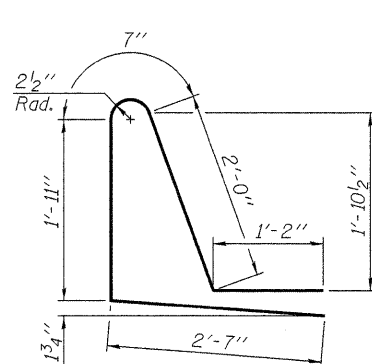
Bars indicated thus 1 x 3-#5 etc. indicates 1 line of bars with 3 lengths per line.



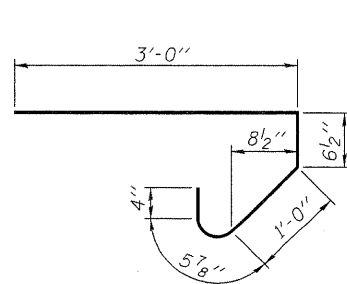
SECTION THRU PARAPET



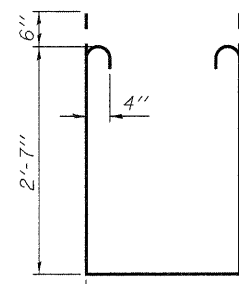
BAR d(E)



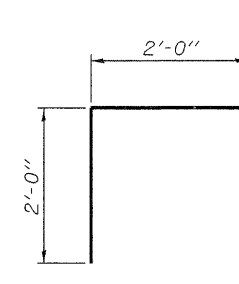
BAR d₁(E)



BAR s(E)



BAR s₁(E)



BAR v(E)

S-I-D 7-1-10



FILE NAME = 0520000-64057.DGN	DESIGNED - J.A.M.	REVISED -
USER NAME = S.A.P.	CHECKED - A.R.K.	REVISED -
PLOT SCALE =	DRAWN - S.A.P.	REVISED -
PLOT DATE = 08/29/11	CHECKED - J.A.M. & A.R.K.	REVISED -

**STATE OF ILLINOIS
DEPARTMENT OF TRANSPORTATION**

**SUPERSTRUCTURE DETAILS
STRUCTURE NO. 052-0080**

SHEET NO. 14 OF 32 SHEETS

F.A.P. RTE. 316	SECTION 102BR-5	COUNTY LEE	TOTAL SHEETS 216	SHEET NO. 115
			CONTRACT NO. 64D57	
ILLINOIS FED. AID PROJECT				