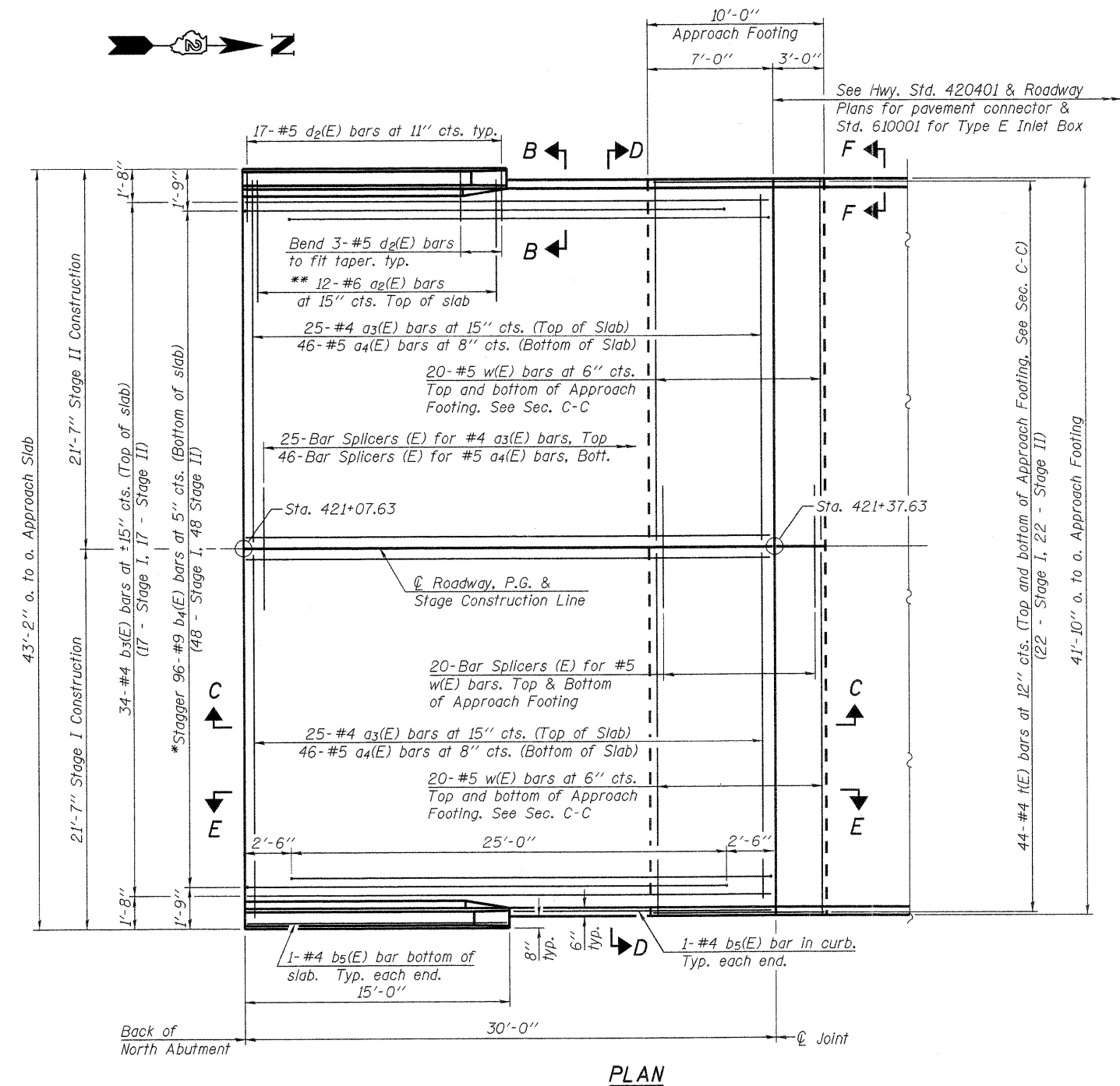
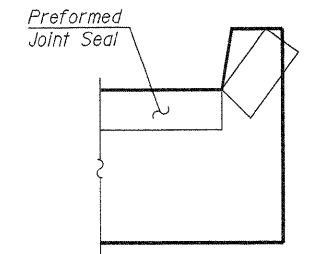
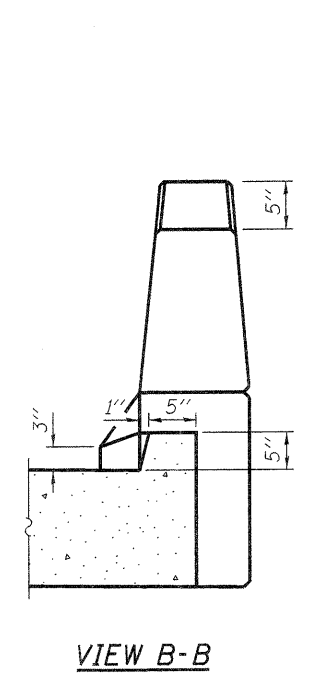
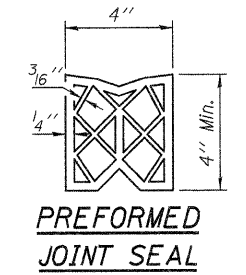
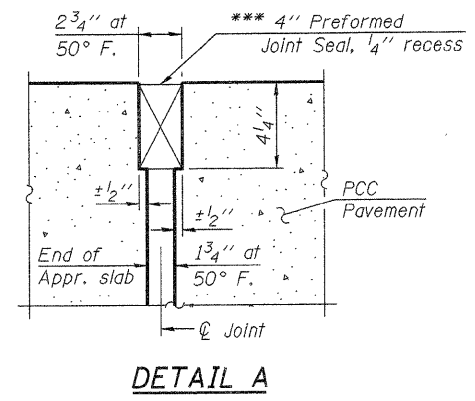


Notes:
 See sheet 18 of 32 for Sections C-C & D-D and View E-E.
 $a_3(E)$ and $a_4(E)$ bar spacings measured along \varnothing Rdwy.



* Tilt #9 $b_4(E)$ bars as required to maintain clearance.
 ** Space between $a_3(E)$ bars, typ. ea. parapet.

***Cost included with Concrete Superstructure



VIEW F-F
 Angle Preformed Joint Seal at 45°
 at curbs when req'd for drainage.

BA-0 7-1-10

| | | | | | | | | | | |
|--|-------------------------------|---------------------------|-----------|---|--|---------------------------|---------|--------|--------------|-----------|
| | FILE NAME = 0520080-64057.DGN | DESIGNED - J.A.M. | REVISED - | STATE OF ILLINOIS DEPARTMENT OF TRANSPORTATION | NORTH BRIDGE APPROACH SLAB DETAILS STRUCTURE NO. 052-0080 | F.A.P. RTE. | SECTION | COUNTY | TOTAL SHEETS | SHEET NO. |
| | USER NAME = S.A.P. | CHECKED - A.R.K. | REVISED - | | | 316 | 102BR-5 | LEE | 216 | 118 |
| | PLOT SCALE = | DRAWN - S.A.P. | REVISED - | | | CONTRACT NO. 64D57 | | | | |
| | PLOT DATE = 08/10/11 | CHECKED - J.A.M. & A.R.K. | REVISED - | | | ILLINOIS FED. AID PROJECT | | | | |