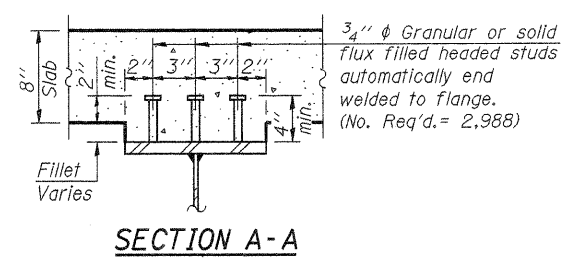


Note: N.T.R. Indicates that Notch Toughness Requirements are applicable.

Note: See Sheet 20 of 32 for Splice Details.

TOP OF BEAM ELEVATIONS
(For Fabrication Only)

	Beam 1	Beam 2	Beam 3	Beam 4	Beam 5	Beam 6
℄ Brg. S. Abut.	700.80	700.95	701.06	701.06	700.95	700.80
℄ Splice #1	700.61	700.76	700.87	700.87	700.76	700.61
℄ Brg. Pier #1	700.58	700.73	700.84	700.84	700.73	700.58
℄ Brg. Pier #2	700.36	700.51	700.62	700.62	700.51	700.36
℄ Splice #2	700.33	700.48	700.59	700.59	700.48	700.33
℄ Brg. N. Abut.	700.28	700.43	700.54	700.54	700.43	700.28



All structural steel shall be AASHTO M 270 Grade 50W.

Load carrying components designated "N.T.R." shall conform to the Supplemental Requirements for Notch Toughness, Zone 2.

All diaphragms shall be installed as steel is erected and secured with erection pins and bolts except as otherwise noted. Individual diaphragms at supports may be temporarily disconnected to install bearing anchor rods.