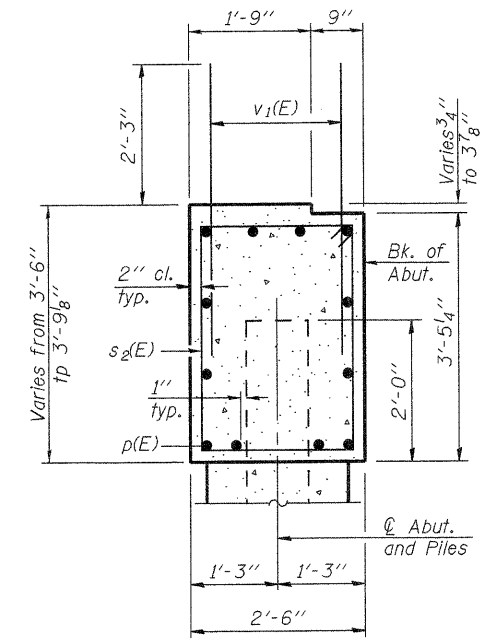
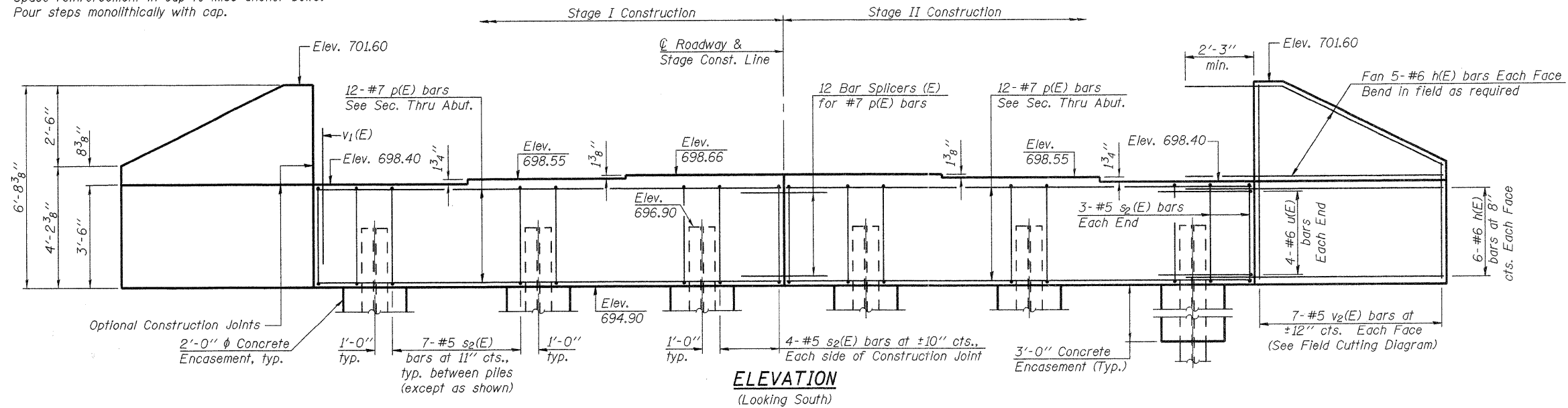


Notes:
Space reinforcement in cap to miss anchor bolts.
Four steps monolithically with cap.

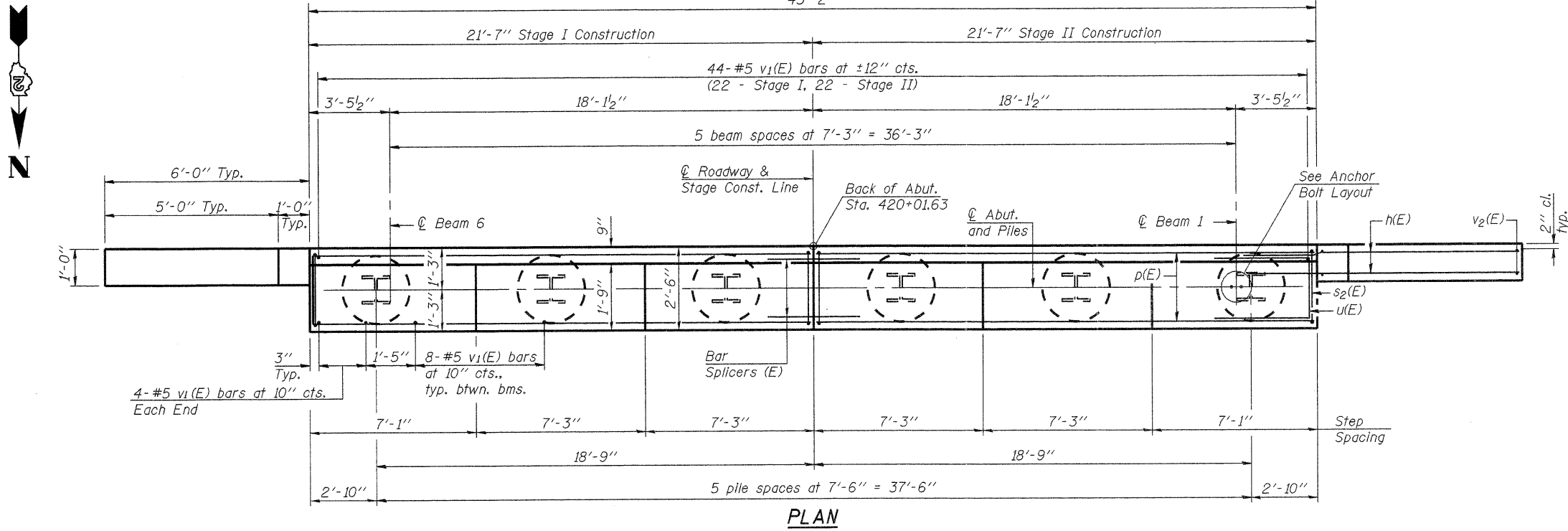


SEC. THRU ABUT.

SOUTH ABUTMENT
BILL OF MATERIAL

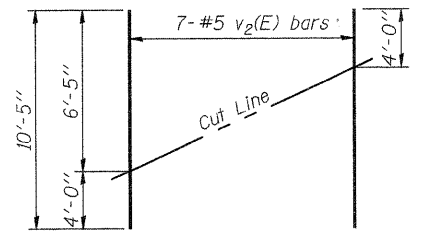
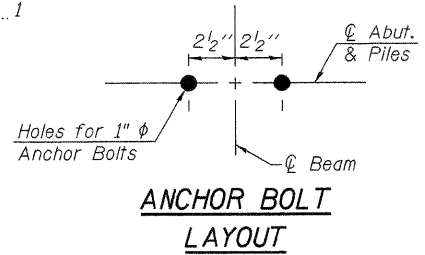
Bar	No.	Size	Length	Shape	
h(E)	44	#6	8'-9"	—	
p(E)	24	#7	21'-3"	—	
s ₂ (E)	42	#5	11'-7"	□	
u(E)	8	#6	14'-1"	—	
v ₁ (E)	92	#5	4'-6"	—	
v ₂ (E)	14	#5	10'-5"	—	
Structure Excavation				Cu. Yd.	149
Concrete Structures				Cu. Yd.	16.8
Reinforcement Bars, Epoxy Coated				Pound	2,880
Furnishing Steel Piles, HP12x53				Foot	275
Driving Piles				Foot	275
Test Pile Steel HP12x53				Each	1
Concrete Encasement				Cu. Yd.	2.1

For details of Bar Splicers, see sheet 28 of 32.
For details of piles and Concrete Encasement, see sheet 27 of 32.



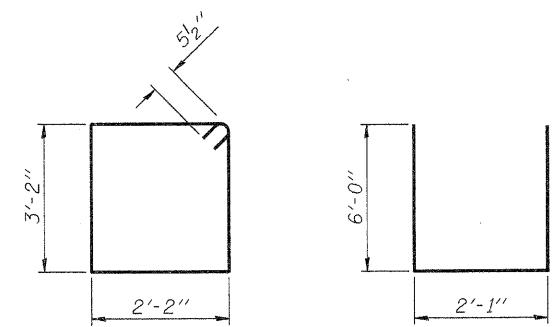
PILE DATA

Type: HP12x53
Nominal Required Bearing: 240 k
Factored Resistance Available: 132 k
Est. Length: 55 ft.
No. Production Piles: 5
No. Test Piles: 1



FIELD CUTTING DIAGRAM

Order v₂(E) full length. Cut as shown and use remainder of bars in opposite face.



BAR s₂(E)

BAR u(E)

AI-0 7-1-10



FILE NAME = 0520080-64057.DGN	DESIGNED - J.A.M.	REVISED -
USER NAME = S.A.P.	CHECKED - A.R.K.	REVISED -
PLOT SCALE =	DRAWN - S.A.P.	REVISED -
PLOT DATE = 08/10/11	CHECKED - J.A.M. & A.R.K.	REVISED -

STATE OF ILLINOIS
DEPARTMENT OF TRANSPORTATION

SOUTH ABUTMENT
STRUCTURE NO. 052-0080

SHEET NO. 22 OF 32 SHEETS

F.A.P. RTE.	SECTION	COUNTY	TOTAL SHEETS	SHEET NO.
316	102BR-5	LEE	216	123
				CONTRACT NO. 64057
ILLINOIS FED. AID PROJECT				