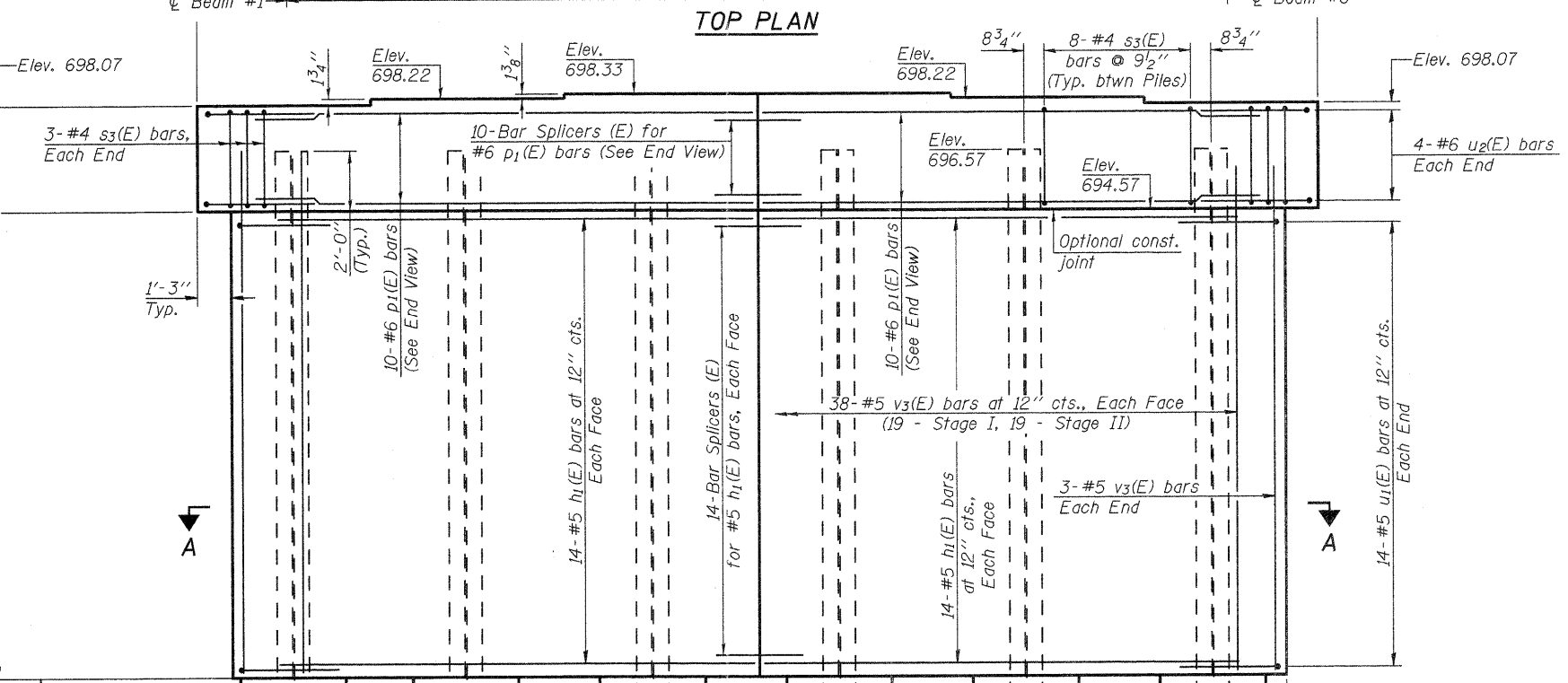
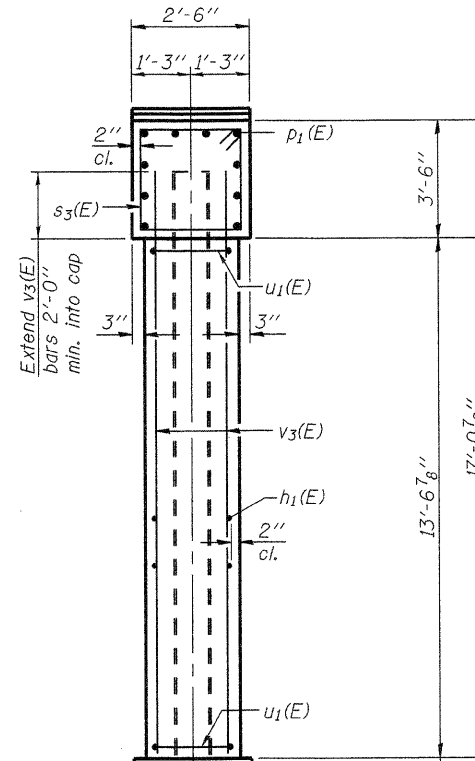
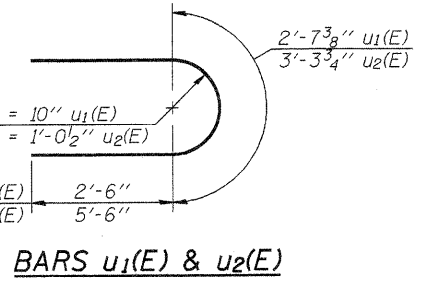
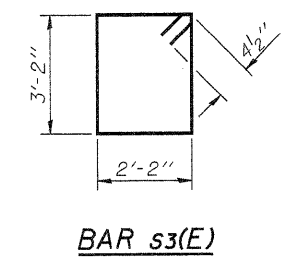
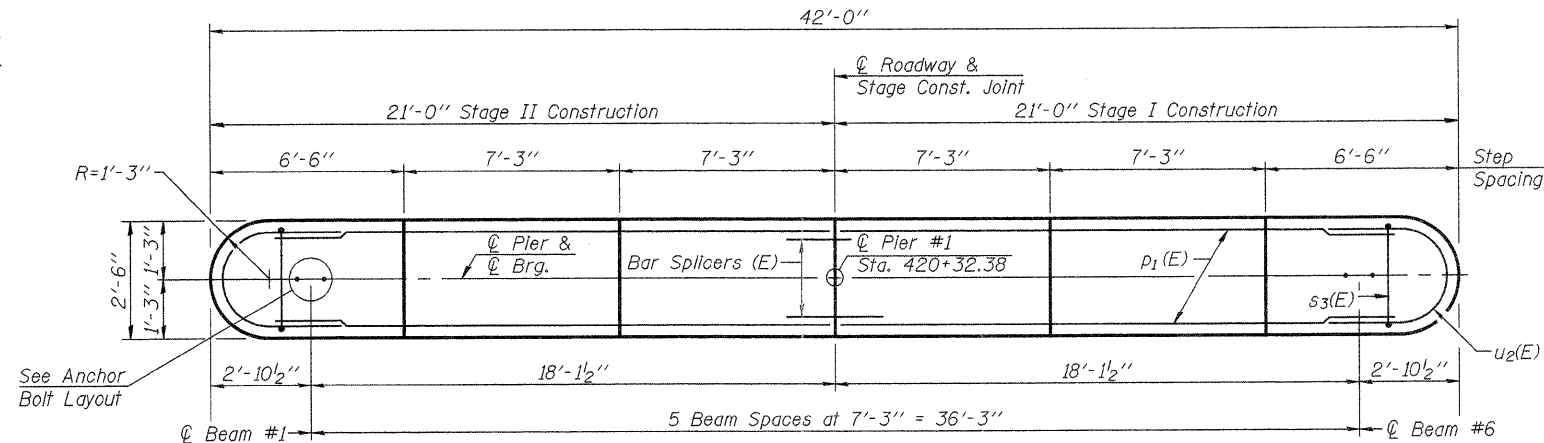


Notes:
 If a portion of the pier wall or concrete encasement is under water, reinforcement may be placed underwater into forms. Concrete shall be tremied according to Article 503.08 of the Standard Specifications to an elevation of 1'-0" above the water line at the time of construction.
 Space reinforcement in cap to miss anchor bolts. Pour steps monolithically with cap.
 For details of piles and concrete encasement, see sheet 27 of 32.



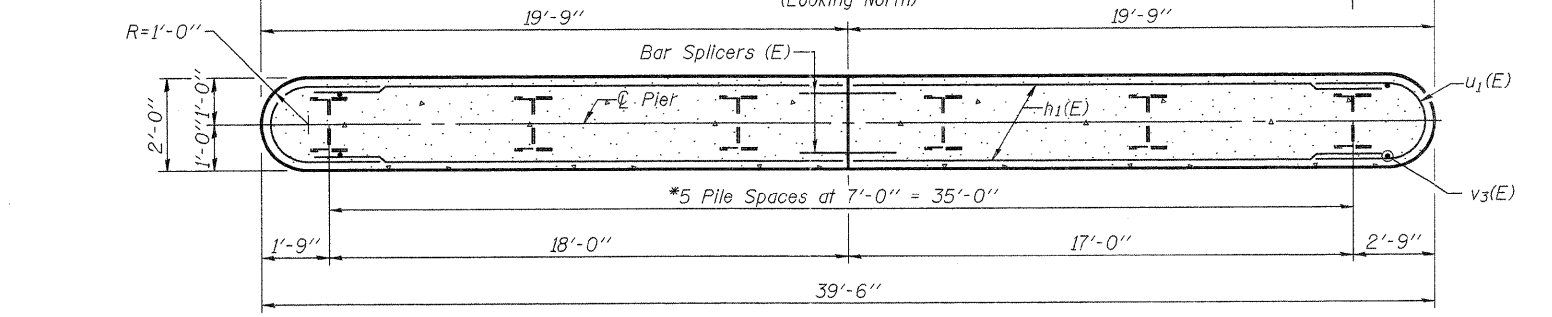
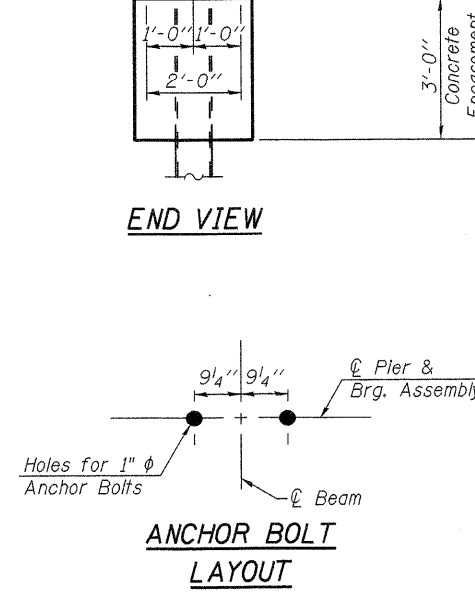
PILE DATA

Type:..... HP14x73
 Nominal Required Bearing:..... 435 k
 Factored Resistance Available:..... 200 k
 Est. Length:..... 60 ft.
 No. Production Piles:..... 5
 No. Test Piles:..... 1

**PIER #1
 BILL OF MATERIAL**

Bar	No.	Size	Length	Shape
h1(E)	56	#5	18'-6"	—
p1(E)	20	#6	19'-6"	—
s3(E)	46	#4	11'-5"	□
u1(E)	28	#5	7'-8"	U
u2(E)	8	#6	14'-3"	U
v3(E)	82	#5	15'-6"	—
Structure Excavation		Cu. Yd.	57	
Concrete Structures		Cu. Yd.	53.3	
Reinforcement Bars, Epoxy Coated		Pound	3,740	
Furnishing Steel Piles HP14x73		Foot	300	
Driving Piles HP14x73		Foot	300	
Test Pile Steel HP14x73		Each	1	
Concrete Encasement		Cu. Yd.	3.3	
Underwater Structure Excavation Protection, Location 3		Each	1	

For details of Bar Splicers, See Sheet 28 of 32.



*Note: Proposed piles spaced to miss existing piles. See sheet 26 or 32.

PC-1 7-1-10