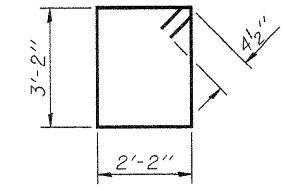
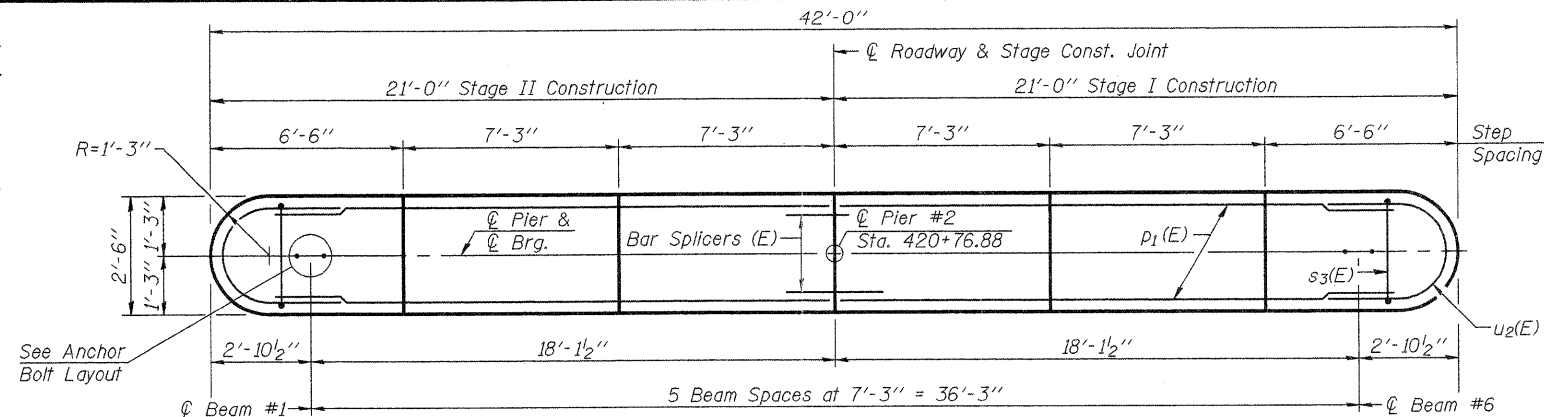
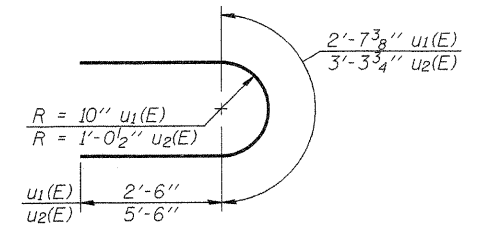


Notes:  
 If a portion of the pier wall or concrete encasement is under water, reinforcement may be placed underwater into forms. Concrete shall be tremied according to Article 503.08 of the Standard Specifications to an elevation of 1'-0" above the water line at the time of construction.  
 Space reinforcement in cap to miss anchor bolts. Four steps monolithically with cap.  
 For details of piles and concrete encasement, see sheet 27 of 32.



BAR s3(E)



BARS u1(E) & u2(E)

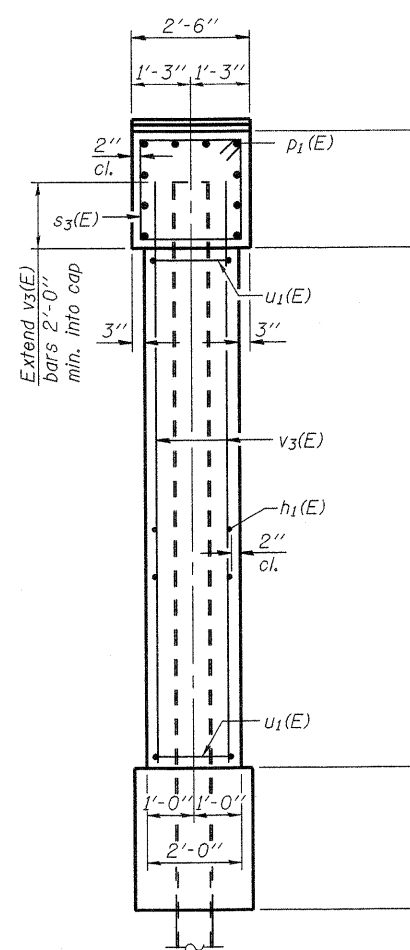
**PILE DATA**

Type:..... HP14x73  
 Nominal Required Bearing:..... 435 k  
 Factored Resistance Available:..... 200 k  
 Est. Length:..... 77 ft.  
 No. Production Piles:..... 5  
 No. Test Piles:..... 1

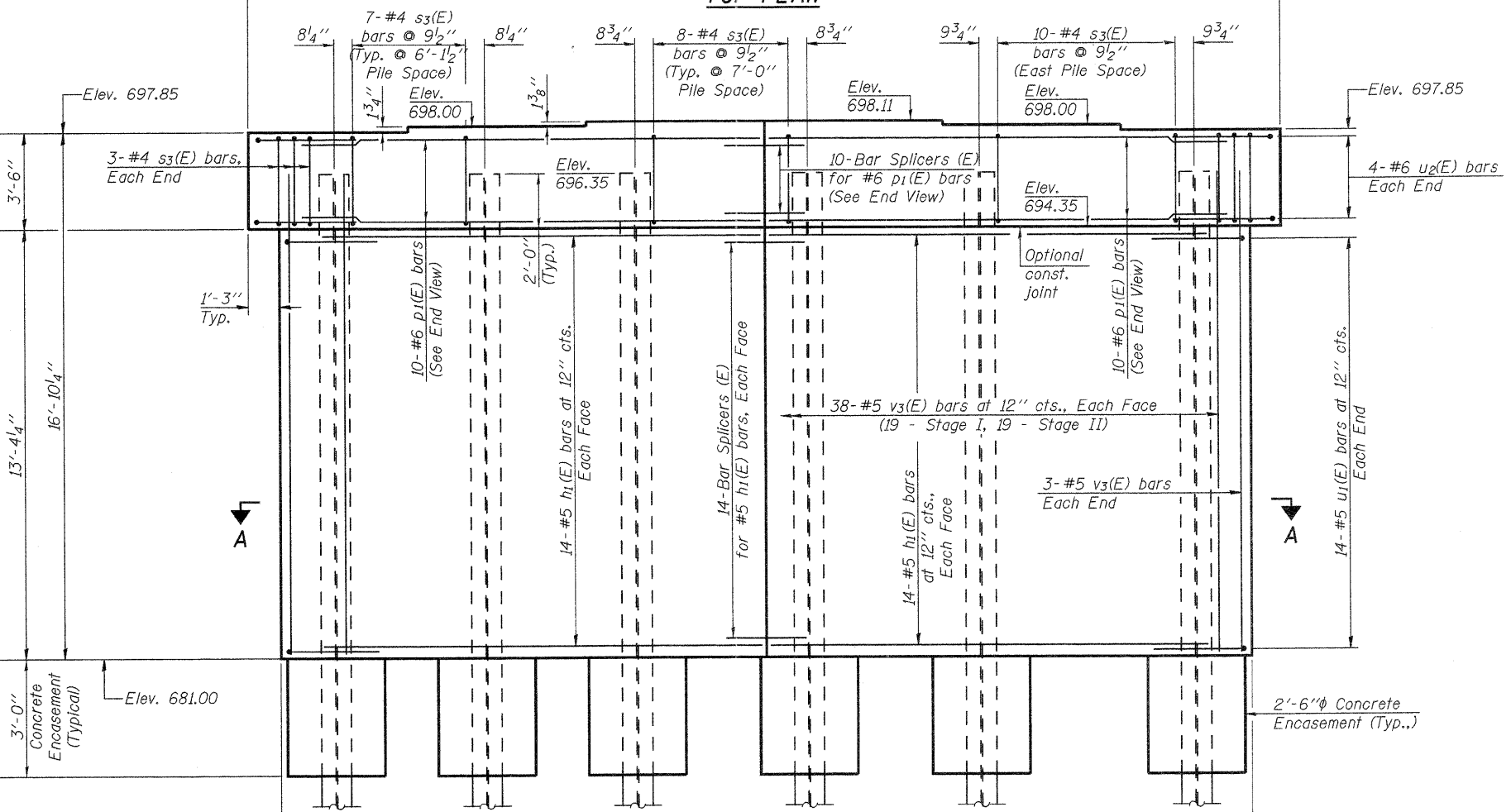
**PIER #2  
 BILL OF MATERIAL**

Bar	No.	Size	Length	Shape
h1(E)	56	#5	18'-6"	—
p1(E)	20	#6	19'-6"	—
s3(E)	46	#4	11'-5"	□
u1(E)	28	#5	7'-8"	U
u2(E)	8	#6	14'-3"	U
v3(E)	82	#5	15'-6"	—
Structure Excavation		Cu. Yd.	51	
Concrete Structures		Cu. Yd.	52.6	
Reinforcement Bars, Epoxy Coated		Pound	3,740	
Furnishing Steel Piles HP14x73		Foot	385	
Driving Piles		Foot	385	
Test Pile Steel HP14x73		Each	1	
Concrete Encasement		Cu. Yd.	3.3	
Underwater Structure Excavation Protection, Location 4		Each	1	

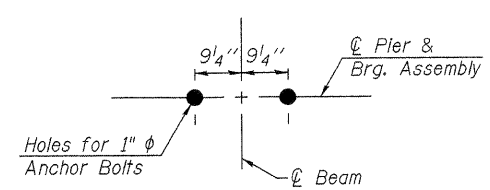
For details of Bar Splicers, See Sheet 28 of 32.



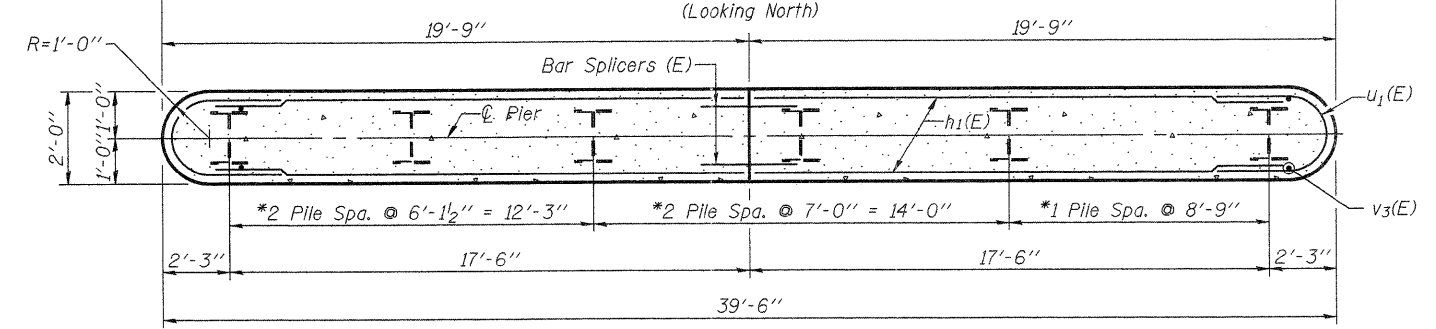
END VIEW



ELEVATION (Looking North)



ANCHOR BOLT LAYOUT



SECTION A-A

PC-1 7-1-10



FILE NAME = 0520088-64057.DGN	DESIGNED - J.A.M.	REVISED -
USER NAME = S.A.P.	CHECKED - A.R.K.	REVISED -
PLOT SCALE =	DRAWN - S.A.P.	REVISED -
PLOT DATE = 08/18/11	CHECKED - J.A.M. & A.R.K.	REVISED -

STATE OF ILLINOIS  
 DEPARTMENT OF TRANSPORTATION

PIER NO. 2  
 STRUCTURE NO. 052-0080

SHEET NO. 25 OF 32 SHEETS

F.A.P. RTE. 316	SECTION 102BR-5	COUNTY LEE	TOTAL SHEETS 216	SHEET NO. 126
			CONTRACT NO. 64D57	
ILLINOIS FED. AID PROJECT				