

EXISTING STRUCTURE PLANS (FOR REFERENCE ONLY)

B-AT

CONTRACT NO. 64B

F.A.P. RTE.	SECTION	COUNTY	TOTAL SHEETS	SHEET NO.
316	*	LEE	28	1

STATE OF ILLINOIS
DEPARTMENT OF TRANSPORTATION
DIVISION OF HIGHWAYS

PROPOSED HIGHWAY PLANS

FAP ROUTE 316 (IL26)
SECTION (102BR)M & (102BR-1)M-1

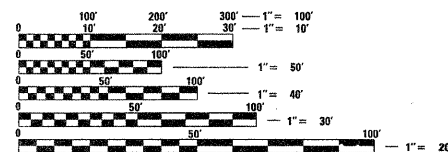
LEE COUNTY
C-92-015-06

D-92-091-05



FOR INDEX OF SHEETS, SEE SHEET NO. 2
FOR STATE STANDARDS, SEE SHEET NO. 2

MARION TOWNSHIP SECTION - 21 & 22
EAST GROVE SECTION - 3 & 4



FULL SIZE PLANS HAVE BEEN PREPARED USING STANDARD ENGINEERING SCALES. REDUCED SIZED PLANS WILL NOT CONFORM TO STANDARD SCALES. IN MAKING MEASUREMENTS ON REDUCED PLANS, THE ABOVE SCALES MAY BE USED.

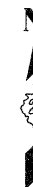
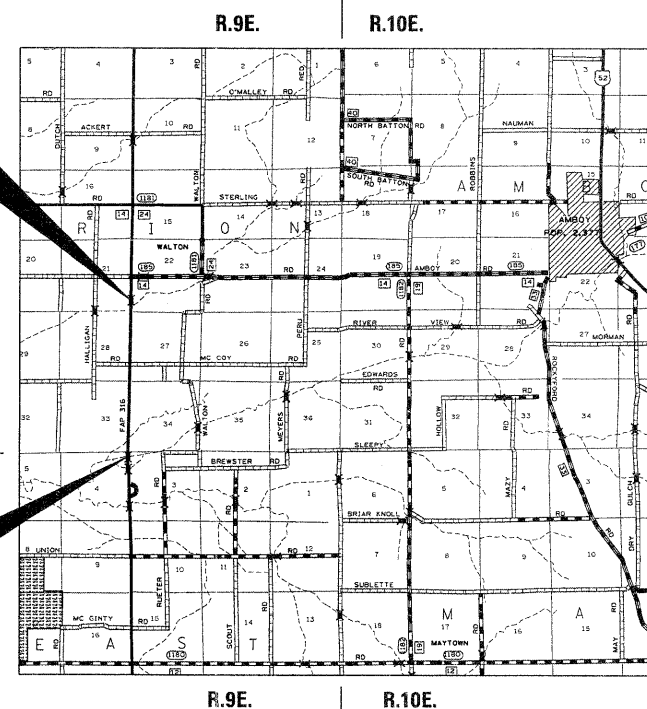
J.J.L.I.E.
JOINT UTILITY LOCATION INFORMATION FOR EXCAVATION
1-800-892-0123

CONTRACT NO. 64B28

FAP ROUTE 316 (IL 26) SECTION 102BR-5 LEE COUNTY

PROJECT LOCATION #2
STR. NO. 052-0025

PROJECT LOCATION #1
STR. NO. 052-0026



STATE OF ILLINOIS
DEPARTMENT OF TRANSPORTATION
DIVISION OF HIGHWAYS

SUBMITTED 6-1 2007

Greg F. Brown
DEPUTY DIRECTOR OF HIGHWAYS, REGION ENGINEER

June 29 2007
Eric E. Hearn
ENGINEER OF DESIGN AND ENVIRONMENT

June 29 2007
Milton R. See
DIRECTOR OF HIGHWAYS, CHIEF ENGINEER

PRINTED BY THE AUTHORITY
OF THE STATE OF ILLINOIS

FILE NAME =	USER NAME =	DESIGNED -	REVISED -	STATE OF ILLINOIS DEPARTMENT OF TRANSPORTATION				EXISTING STRUCTURE PLANS				F.A.P. RTE.	SECTION	COUNTY	TOTAL SHEETS	SHEET NO.
c:\pwork\pwork\dot\grantpm\dms41818\02-11-typoscal.dgn	grantpm	DRAWN -	REVISED -	SCALE:				SHEET NO. OF SHEETS STA. TO STA.				316	*	LEE	216	148
		CHECKED -	REVISED -													
		DATE -	REVISED -													