

EXISTING STRUCTURE PLANS (FOR REFERENCE ONLY)

Δ (102BR)M & (102BR)-1M-1

ROUTE NO.	SECTION	COUNTY	SHEET NO.	SHEETS
316	Δ	LEE	28	7
1 SHEETS				

Contract Number: 64B28

GENERAL NOTES

All structural steel shall conform to AASHTO Classification M-270 Gr. 36, unless otherwise noted.

Plan dimensions and details relative to existing plans are subject to routine variations. The Contractor shall field verify existing dimensions and details affecting new construction and make necessary approved adjustments prior to construction or ordering of materials. Such variations shall not be cause for additional compensation for a change in scope of the work, however, the Contractor will be paid for the quantity actually furnished based upon the unit price bid for the work.

See Section 584 of the Standard Specifications for Epoxy Grouting of Threaded Rods.

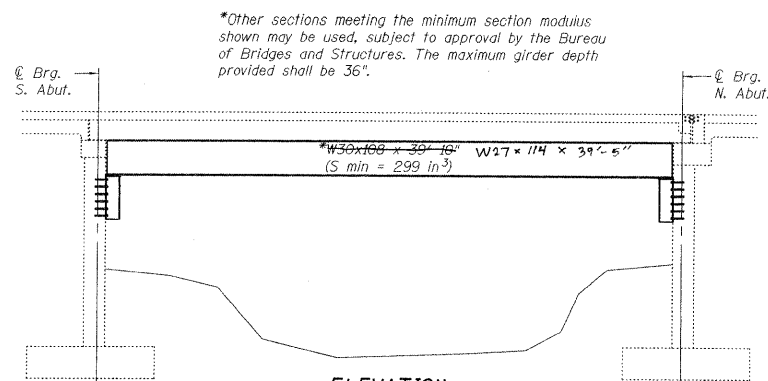
The cost of epoxy grouting threaded rods shall be included with Furnishing and Erecting Structural Steel.

The Contractor has the option of using used steel. See special provisions.

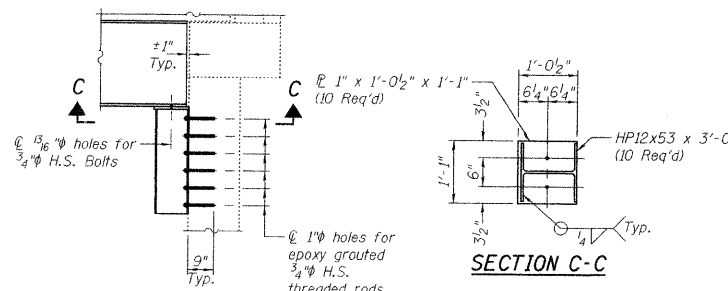
The Contractor is advised that the existing PPC Deck Beams are in a deteriorated condition with reduced load carrying capacity. It is the contractor's responsibility to account for the condition of the beams when developing construction procedures.

If the contractor's procedure for placement of beams involves placement of cranes or other heavy equipment on the bridge, a detailed procedure shall be submitted to the Engineer for approval. The procedure shall include calculations, prepared and sealed by an Illinois Licensed Structural Engineer, verifying that the equipment and procedure used will not overstress the existing beams. To distribute load to multiple beams and protect the existing surface, in all cases a double layer mat of heavy timbers shall be used at all times under crane tracks or wheels and any outriggers in the down position. If necessary, shims shall be used under the crane mat to ensure uniform contact with the underlying beams.

STATE OF ILLINOIS DEPARTMENT OF TRANSPORTATION

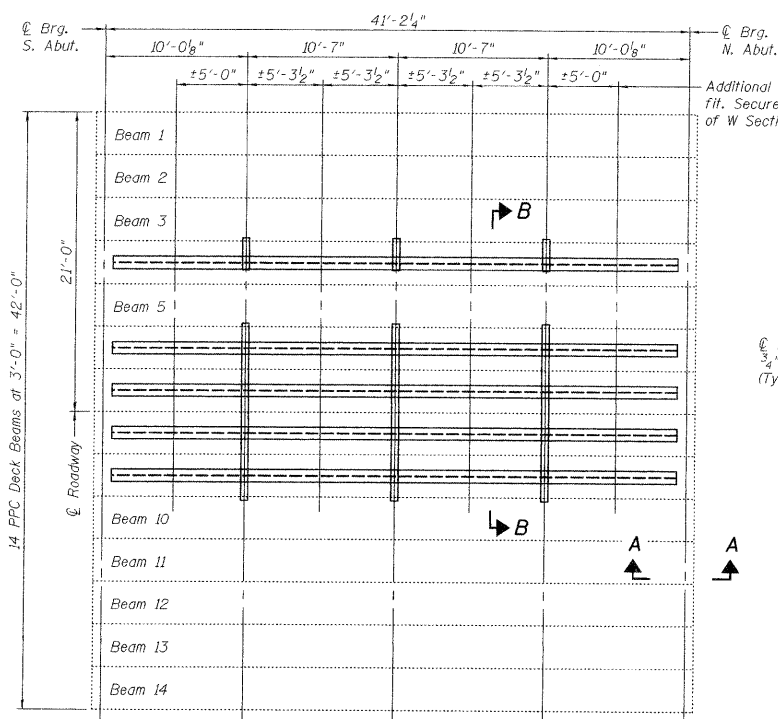


ELEVATION

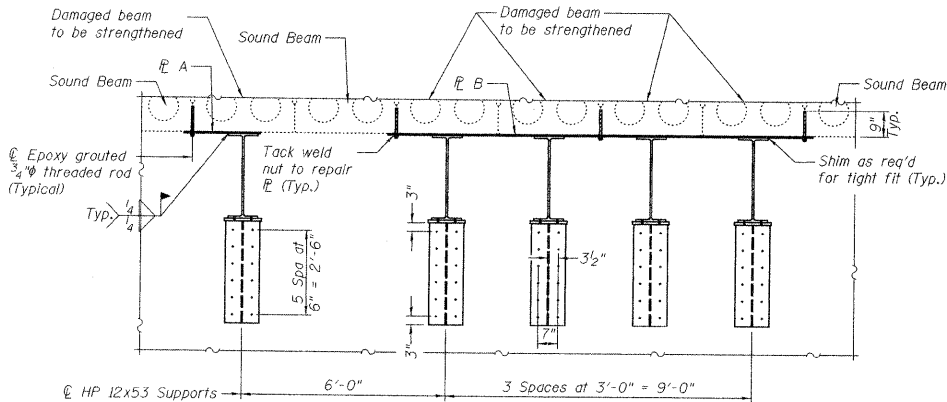


SECTION A-A

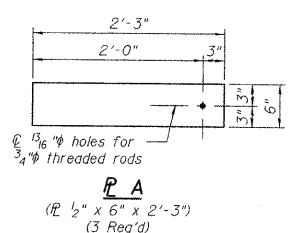
SECTION C-C



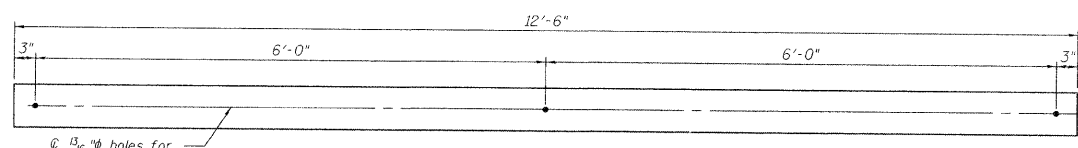
PLAN



SECTION B-B



P A
(1/2" x 6" x 2'-3")
(3 Req'd)



P B
(1/2" x 6" x 12'-6")
(3 Req'd)

TOTAL BILL OF MATERIAL

ITEM	UNIT	QUANTITY
Furnishing and Erecting Structural Steel	Pound	24,230

PLAN AND ELEVATION
F.A. RT. 38
LEE COUNTY
SN 052-0025

DESIGNED: <i>Victor H. Veliz</i>	EXAMINED: <i>[Signature]</i>	DATE: June 21, 2007
CHECKED: <i>[Signature]</i>	PASSED: <i>[Signature]</i>	
DRAWN: <i>[Signature]</i>		
CHECKED: <i>VHV</i>		



SLT-92-001-07

FILE NAME =	USER NAME = grantpm	DESIGNED -	REVISED -	STATE OF ILLINOIS DEPARTMENT OF TRANSPORTATION	EXISTING STRUCTURE PLANS	F.A.P. RTE. 316	SECTION *	COUNTY LEE	TOTAL SHEETS 216	SHEET NO. 161
ct:\pw_work\pwsdot\grantpm\dms41810\02-alt-typical.dgn		DRAWN -	REVISED -							
PLOT SCALE = 50.0000' / 1"		CHECKED -	REVISED -							
PLOT DATE = Thu Jul 14 10:19:56 2011		DATE -	REVISED -							
						SCALE:	SHEET NO. OF SHEETS STA.	TO STA.		
						ILLINOIS FED. AID PROJECT				
						CONTRACT NO. 64D57				
						• 102BR-5, 102BR-6, & 102BR-7				