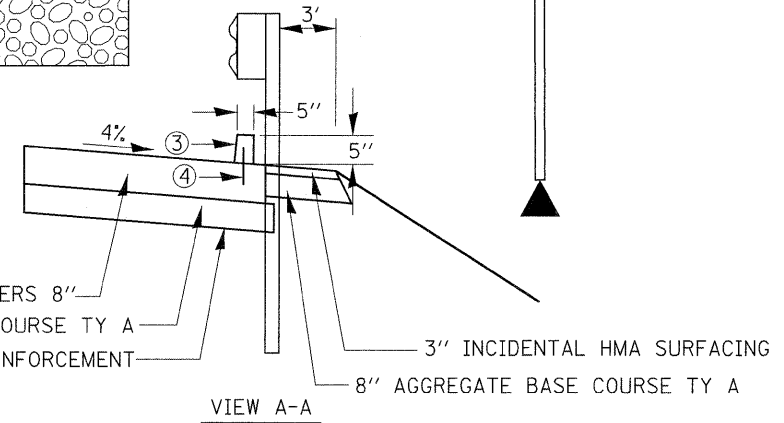
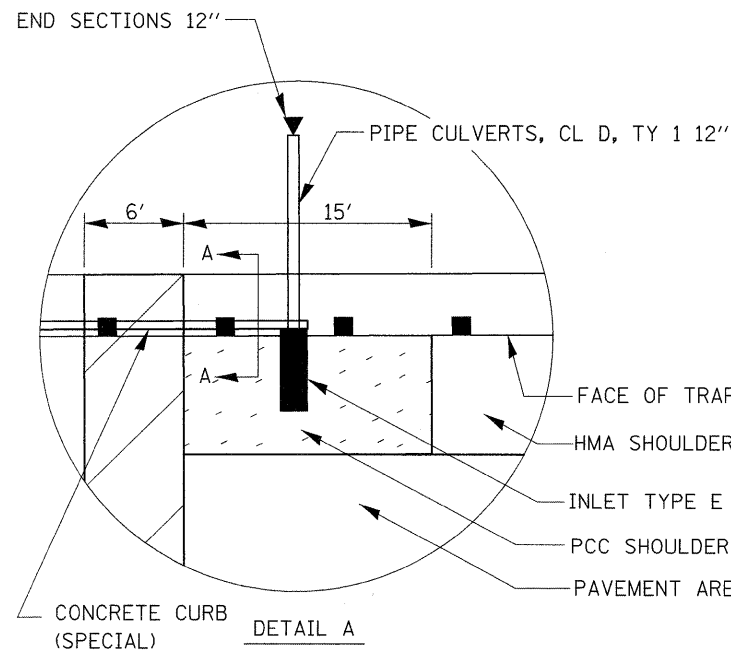
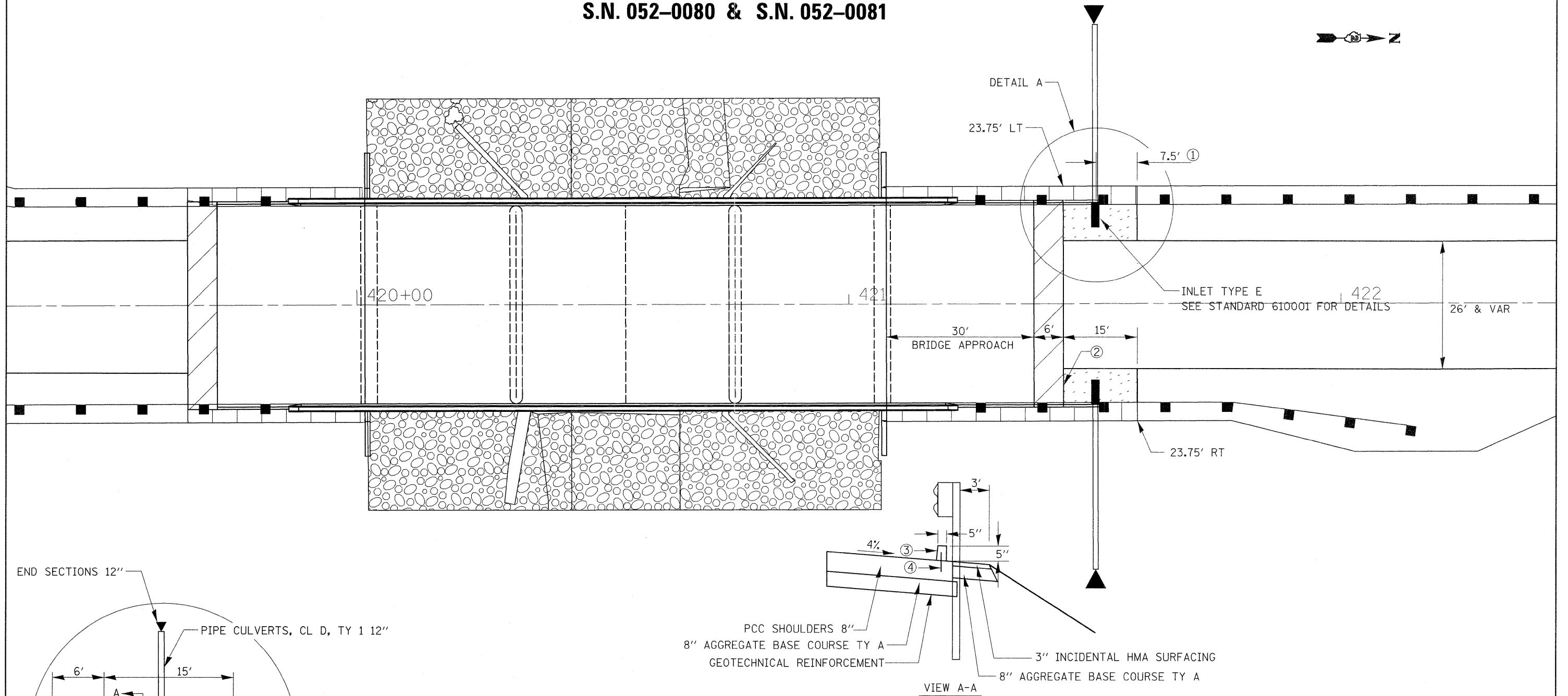


SHOULDER INLET TYPE E WITH CURB DETAIL

S.N. 052-0080 & S.N. 052-0081



CONCRETE CURB

NOTES:

- ① INCREASE OR DECREASE THIS DIMENSION AS NEEDED TO POSITION THE INLET BOX AND PIPE DRAIN BETWEEN THE PROPOSED APPROACH GUARDRAIL POSTS
- ② SEE STANDARD 420001 FOR JOINT DETAILS
- ③ CONCRETE CURB (SPECIAL). SEE DISTRICT STANDARD 11.4 FOR DETAILS
- ④ THE VERTICAL NO. 4 BARS MAY BE PLACED AND TIED SECURELY BETWEEN THE CONCRETE CURB (SPECIAL) AND THE PCC SHOULDERS 8" IN LIEU OF DRILLING AND GROUTING THEM AS DISTRICT STANDARD 11.4 SHOWS AS LONG AS BOTH THE CURB AND SHOULDER ARE POURED AT THE SAME TIME

LEGEND

	3" INCIDENTAL HMA SURFACING
	8" AGGREGATE BASE COURSE TY B
	BRIDGE APPROACH PAVEMENT CONNECTOR (PCC)
	PORTLAND CEMENT CONCRETE SHOULDERS 8"

FILE NAME =	USER NAME = grantpm	DESIGNED -	REVISED -
et:\pw_work\pwidot\grantpm\dms41810\0210807-sht-details.dgn		DRAWN -	REVISED -
PLOT SCALE = 20,0000' / in.		CHECKED -	REVISED -
PLOT DATE = Tue Aug 23 06:20:36 2011		DATE -	REVISED -

**STATE OF ILLINOIS
DEPARTMENT OF TRANSPORTATION**

**SHOULDER INLET TYPE E WITH CURB
S.N. 052-0080 & S.N. 052-0081**

SCALE: SHEET NO. OF SHEETS STA. TO STA.

F.A.P. RTE. 316	SECTION *	COUNTY LEE	TOTAL SHEETS 216	SHEET NO. 166
				CONTRACT NO. 64D57
ILLINOIS FED. AID PROJECT				

• 102BR-5, 102BR-6 & 102BR-7