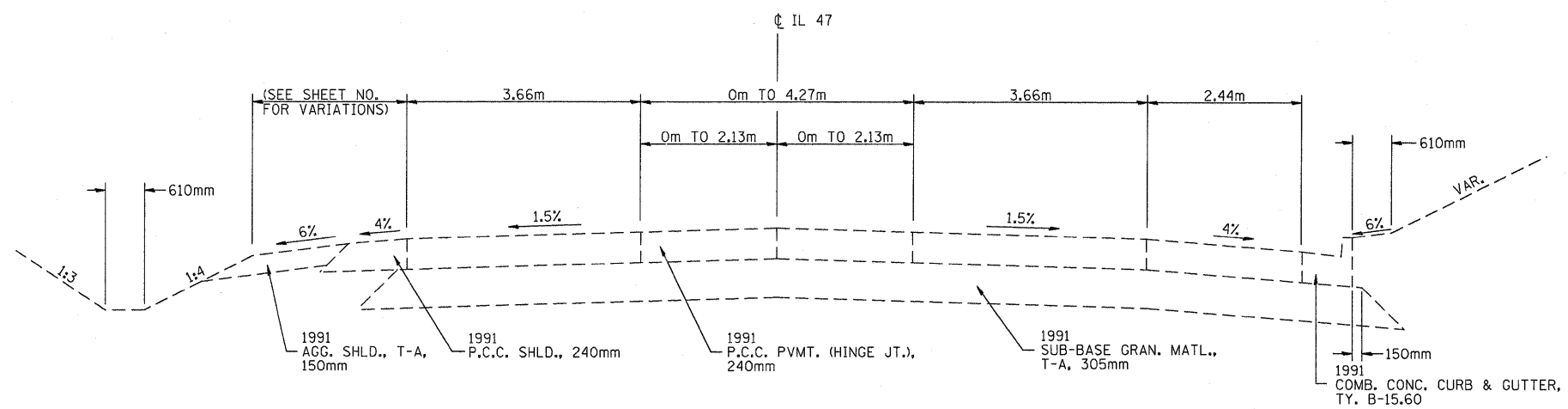
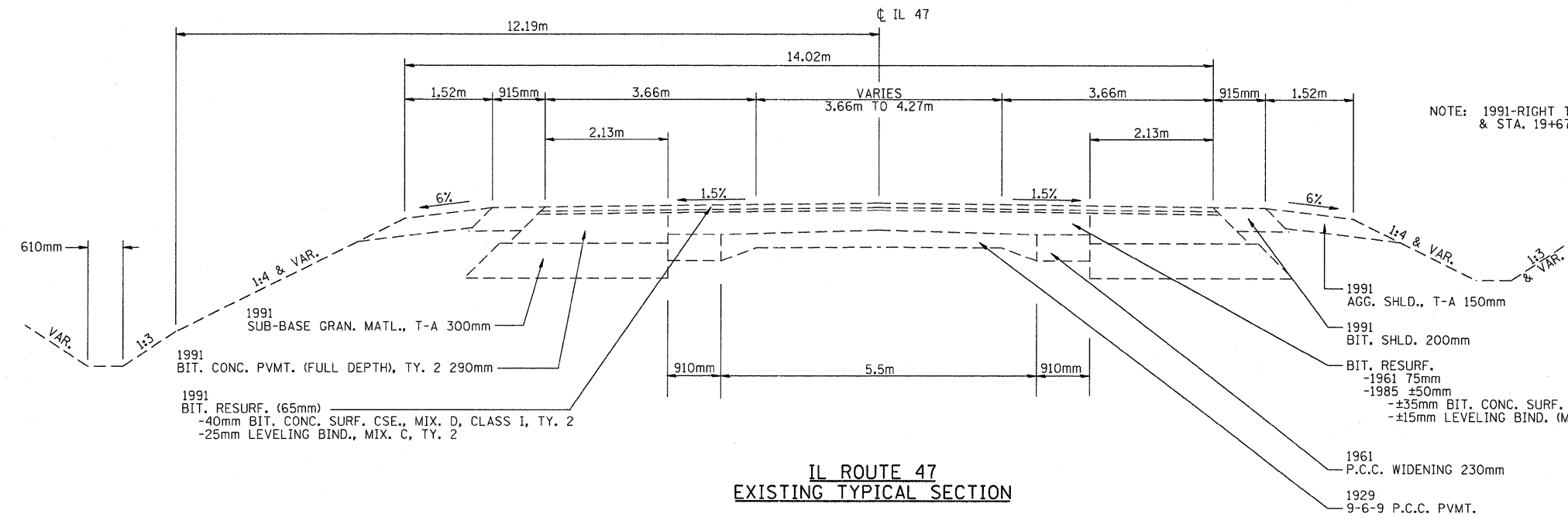


F.A.P. RTE.	SECTION	COUNTY	TOTAL SHEETS	SHEET NO.
326	(5CS,13C,108,109)R	KENDALL	931	25
STA. TO STA.		TO STA.		
FED. ROAD DIST. NO.		ILLINOIS	FED. AID PROJECT	



**IL ROUTE 47
EXISTING TYPICAL SECTION
STA. 18+483.24 TO STA. 18+544.20**



**IL ROUTE 47
EXISTING TYPICAL SECTION**

NOTE: 1991-RIGHT TURN LANE, STA. 19+486 TO STA. 19+625.02 RT. & STA. 19+672.27 TO STA. 19+717.05 RT. (SEE SHEET NO.)

REVISIONS	
NAME	DATE

ILLINOIS DEPARTMENT OF TRANSPORTATION
**EXISTING TYPICAL SECTION
FAP 326 (IL. RTE. 47)**
DRAWN BY _____
CHECKED BY _____
DATE _____

FILE: \$FILES\$
PLOTTED: 9/21/2011

HMG JOB NO. 5122