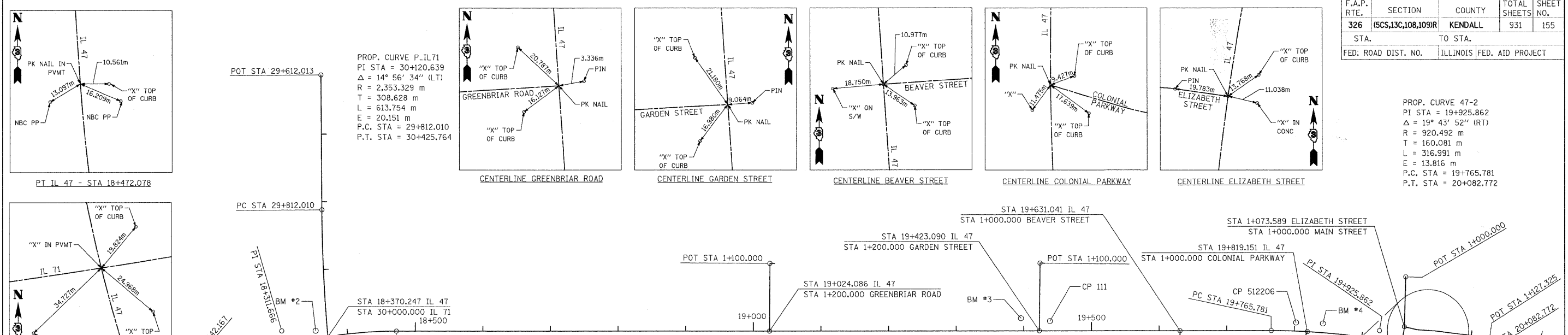


F.A.P. RTE.	SECTION	COUNTY	TOTAL SHEETS	SHEET NO.
326	(SCS,13C,108,109)R	KENDALL	931	155
STA.		TO STA.		
FED. ROAD DIST. NO.		ILLINOIS FED. AID PROJECT		

PROP. CURVE 47-2
 PI STA = 19+925.862
 $\Delta = 19^\circ 43' 52''$ (RT)
 R = 920.492 m
 T = 160.081 m
 L = 316.991 m
 E = 13.816 m
 P.C. STA = 19+765.781
 P.T. STA = 20+082.772



ALIGNMENT COORDINATES - IL 47			
DESCRIPTION	STATION	NORTHING	EASTING
POT	17+842.167	549392.709	290723.470
PC	18+142.167	549634.428	290545.786
PI	18+307.122	549770.999	290445.394
PT	18+472.078	549940.105	290433.842
PC	19+765.781	551230.799	290345.668
PI	19+924.276	551390.508	290334.758
PT	20+082.772	551544.523	290378.407
POT	20+100.000	551561.098	290383.104

ALIGNMENT COORDINATES - BEAVER STREET			
DESCRIPTION	STATION	NORTHING	EASTING
CENTERLINE IL 47	1+000.000	551096.373	290354.852
POT	1+050.000	551103.162	290454.621

ALIGNMENT COORDINATES - IL 71			
DESCRIPTION	STATION	NORTHING	EASTING
POT	29+612.013	549803.130	290063.455
PC	29+812.010	549818.095	290262.892
CENTERLINE IL 47	30+000.000	549839.630	290449.594
PI	30+118.887	549841.189	290570.655
PT	30+425.764	549942.860	290862.056

ALIGNMENT COORDINATES - ELIZABETH STREET			
DESCRIPTION	STATION	NORTHING	EASTING
POT	1+058.594	551423.969	290253.046
PC	1+072.032	551426.847	290325.021
PI	1+076.133	551427.010	290329.119
PT	1+080.212	551426.431	290333.179
CENTERLINE IL 47	1+100.000	551423.634	290352.768

ALIGNMENT COORDINATES - WALNUT DRIVE			
DESCRIPTION	STATION	NORTHING	EASTING
CENTERLINE IL 71	1+000.000	549872.642	290619.760
POT	1+020.000	549853.162	290624.289

ALIGNMENT COORDINATES - MAIN STREET			
DESCRIPTION	STATION	NORTHING	EASTING
CENTERLINE ELZABETH ST.	1+000.000	551426.882	290326.577
PC	1+016.592	551443.275	290329.137
PI	1+020.130	551446.771	290329.683
PT	1+023.654	551450.310	290329.676
PC	1+045.791	551472.447	290329.631
PI	1+047.226	551473.881	290329.628
PT	1+048.659	551475.313	290329.716
POT	1+127.322	551553.829	290334.567

ALIGNMENT COORDINATES - GREENBRIAR ROAD			
DESCRIPTION	STATION	NORTHING	EASTING
POT	1+100.000	550484.672	290296.409
CENTERLINE IL 47	1+200.000	550490.829	290396.219

ALIGNMENT COORDINATES - IL 126			
DESCRIPTION	STATION	NORTHING	EASTING
CENTERLINE IL 47	50+000.000	551561.098	290383.104
POT	50+180.000	551470.392	290538.579

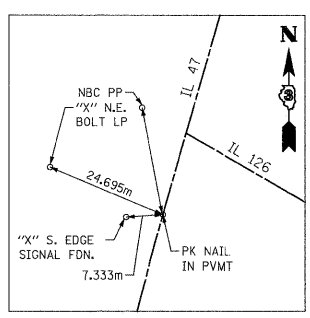
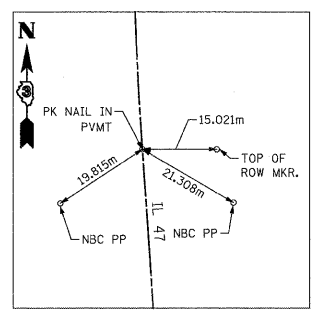
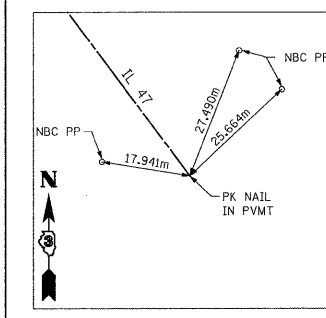
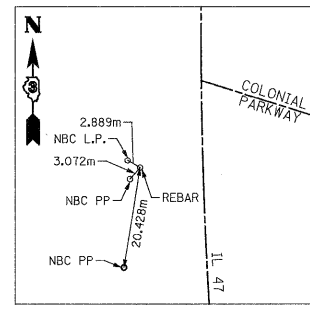
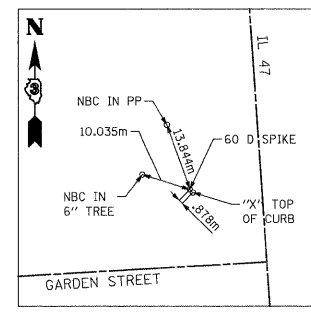
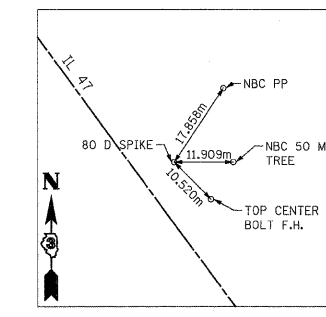
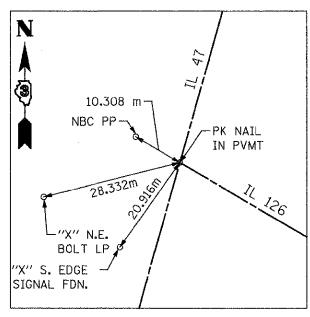
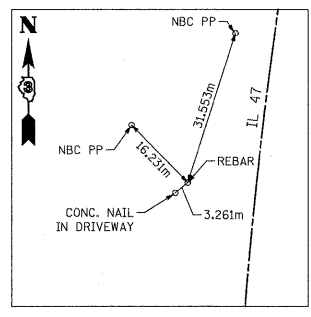
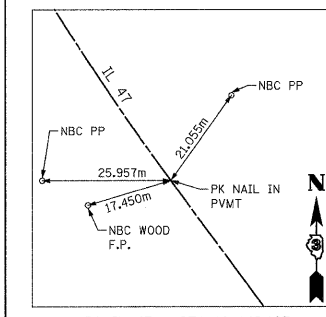
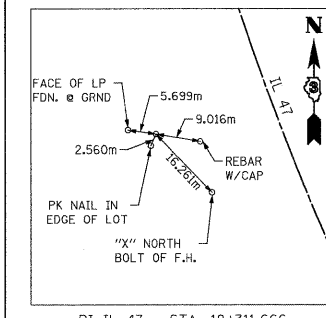
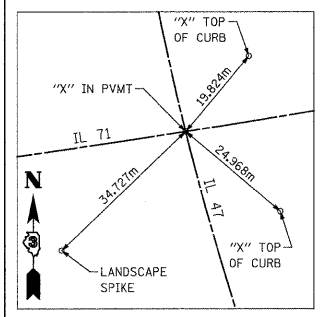
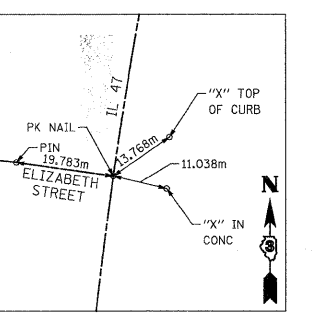
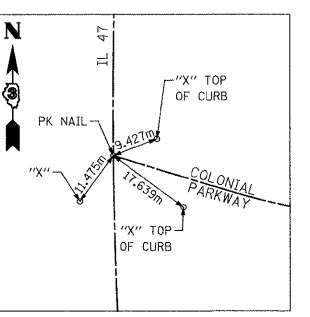
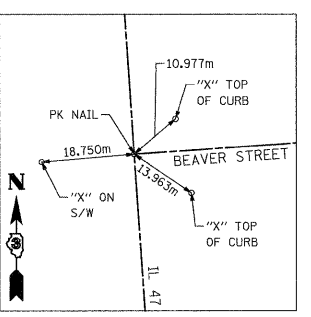
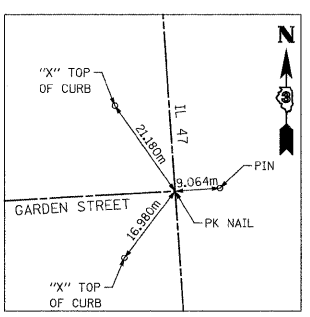
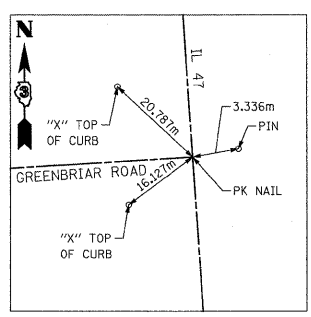
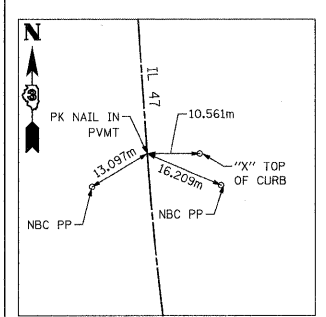
PROP. CURVE COLONIAL
 PI STA = 1+043.337
 $\Delta = 18^\circ 14' 52''$ (LT)
 R = 111.300 m
 T = 17.875 m
 L = 35.447 m
 E = 1.426 m
 P.C. STA = 1+025.462
 P.T. STA = 1+060.909

PROP. CURVE ELIZABETH
 PI STA = 1+076.133
 $\Delta = 10^\circ 24' 53''$ (RT)
 R = 45.000 m
 T = 4.101 m
 L = 8.180 m
 E = 0.186 m
 P.C. STA = 1+072.032
 P.T. STA = 1+080.212

PROP. CURVE MAIN1
 PI STA = 1+020.130
 $\Delta = 8^\circ 59' 32''$ (LT)
 R = 45.000 m
 T = 3.539 m
 L = 7.062 m
 E = 0.139 m
 P.C. STA = 1+016.592
 P.T. STA = 1+023.654

PROP. CURVE MAIN2
 PI STA = 1+047.226
 $\Delta = 3^\circ 39' 05''$ (RT)
 R = 45.000 m
 T = 1.434 m
 L = 2.868 m
 E = 0.023 m
 P.C. STA = 1+045.791
 P.T. STA = 1+048.659

ALIGNMENT COORDINATES - GARDEN STREET			
DESCRIPTION	STATION	NORTHING	EASTING
POT	1+100.000	550883.173	290269.189
CENTERLINE IL 47	1+200.000	550888.906	290369.025



BENCHMARK #1
 ELEV. 226.175
 RR SPIKE IN PP AT SW CORNER SILVER DOLLAR RESTAURANT PARKING LOT STA. 18+278.146 - 17.660 RT.

BENCHMARK #2
 ELEV. 223.505
 CHISELED "SQUARE" TOP SIGNAL FOUNDATION SW QUADRANT IL 47 / IL 71 STA. 18+354.508 - 12.634 LT.

BENCHMARK #3
 ELEV. 206.533
 RR SPIKE IN PP AT SW QUADRANT IL 47 / GARDEN STREET STA. 19+395.884 - 18.706 LT.

BENCHMARK #4
 ELEV. 202.207
 RR SPIKE IN PP AT NW QUADRANT IL 47 / COLONIAL DRIVE STA. 19+841.113 - 13.426 LT.

REVISIONS	
NAME	DATE

ILLINOIS DEPARTMENT OF TRANSPORTATION
ALIGNMENT AND TIES
FAP 326 (IL RTE. 47)
1 OF 5
 DRAWN BY
 CHECKED BY
 DATE

FILE: 1556elgmsht1.dgn
 PLOTTED: 8/13/2011

HMG JOB NO. 5122