

| F.A.P. RTE.         | SECTION            | COUNTY                    | TOTAL SHEETS | SHEET NO. |
|---------------------|--------------------|---------------------------|--------------|-----------|
| 326                 | (6CS,13C,108,109)R | KENDALL                   | 931          | 158       |
| STA.                |                    | TO STA.                   |              |           |
| FED. ROAD DIST. NO. |                    | ILLINOIS FED. AID PROJECT |              |           |

ALIGNMENT COORDINATES - IL 47

| DESCRIPTION | STATION    | NORTHING   | EASTING    |
|-------------|------------|------------|------------|
| PC          | 22+125.848 | 553519.294 | 290786.610 |
| PI          | 22+198.112 | 553572.898 | 290835.073 |
| PT          | 22+266.408 | 553644.208 | 290846.777 |
| PC          | 22+313.265 | 553690.447 | 290854.366 |
| PI          | 22+435.274 | 553810.845 | 290874.126 |
| PT          | 22+557.121 | 553932.527 | 290883.049 |
| POT         | 22+700.545 | 554075.568 | 290893.538 |
| PC          | 22+766.494 | 554141.339 | 290898.370 |
| PI          | 22+891.551 | 554266.060 | 290907.532 |
| PRC         | 23+016.510 | 554391.116 | 290908.138 |

ALIGNMENT COORDINATES - US 34

| DESCRIPTION | STATION     | NORTHING   | EASTING    |
|-------------|-------------|------------|------------|
| PC          | 189+857.430 | 554095.107 | 290752.351 |
| PI          | 189+982.965 | 554074.995 | 290876.265 |
| PT          | 190+108.393 | 554063.830 | 291001.303 |
| POT         | 190+642.687 | 554016.312 | 291533.480 |

ALIGNMENT COORDINATES - US 34

| DESCRIPTION      | STATION     | NORTHING   | EASTING    |
|------------------|-------------|------------|------------|
| PT               | 189+106.909 | 554258.970 | 290021.283 |
| PC               | 189+269.511 | 554210.586 | 290176.519 |
| PI               | 189+423.914 | 554164.641 | 290323.928 |
| PT               | 189+577.804 | 554139.905 | 290476.337 |
| PC               | 189+857.430 | 554095.107 | 290752.351 |
| PI               | 189+982.965 | 554074.995 | 290876.265 |
| CENTERLINE IL 47 | 190+000.000 | 554075.144 | 290893.507 |
| PT               | 190+108.393 | 554063.830 | 291001.303 |
| POT              | 190+642.687 | 554016.312 | 291533.480 |

ALIGNMENT COORDINATES - WALNUT STREET

| DESCRIPTION      | STATION   | NORTHING   | EASTING    |
|------------------|-----------|------------|------------|
| CENTERLINE IL 47 | 1+000.000 | 553585.937 | 290829.598 |
| POT              | 1+100.000 | 553575.520 | 290929.054 |

ALIGNMENT COORDINATES - LANDMARK AVENUE

| DESCRIPTION      | STATION   | NORTHING   | EASTING    |
|------------------|-----------|------------|------------|
| CENTERLINE IL 47 | 1+000.000 | 553792.437 | 290869.130 |
| POT              | 1+100.000 | 553776.274 | 290967.815 |

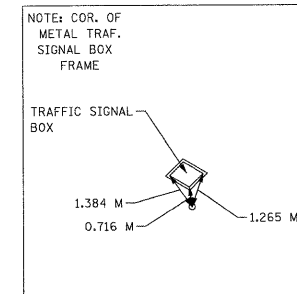
MATCHLINE STA. 189+700

BENCHMARK #12

ELEV. 194.752  
CHISELED "X" TOP BOLT ON FLAGPOLE  
AT NW QUADRANT  
IL 47 / LANDMARK AVENUE  
STA. 22+419.420 - 30.102 LT.

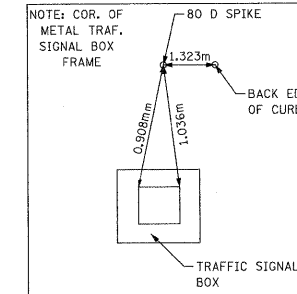
BENCHMARK #16

ELEV. 195.121  
RR SPIKE IN PP  
AT NE QUADRANT  
IL 47 / US 34  
STA. 22+721.388 - 17.435 RT.



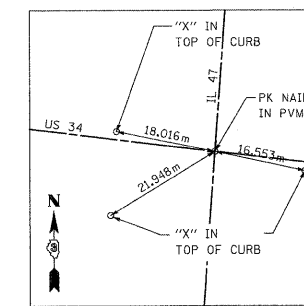
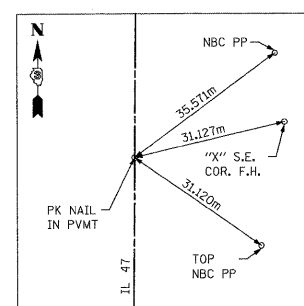
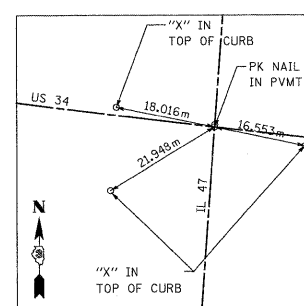
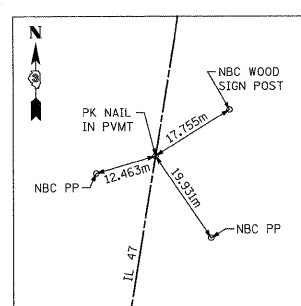
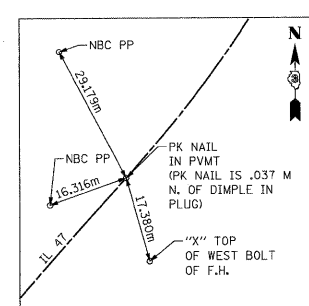
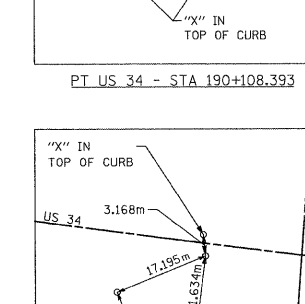
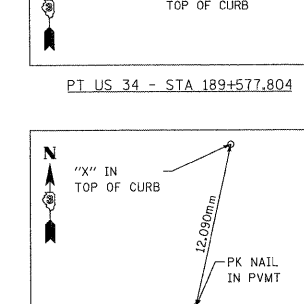
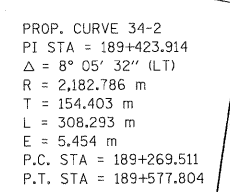
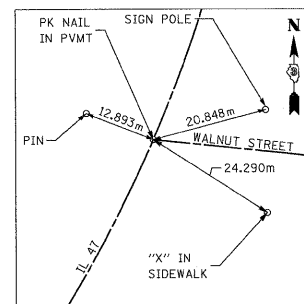
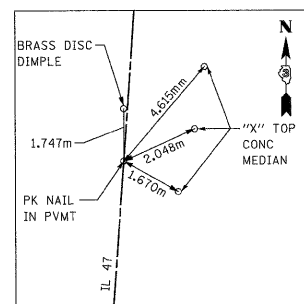
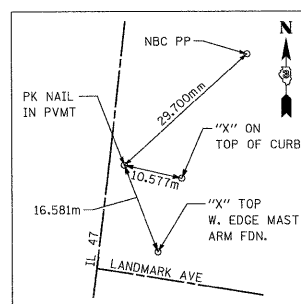
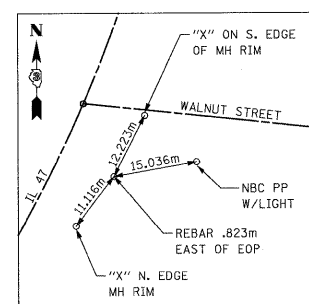
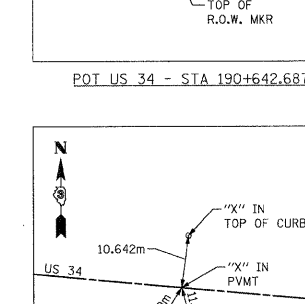
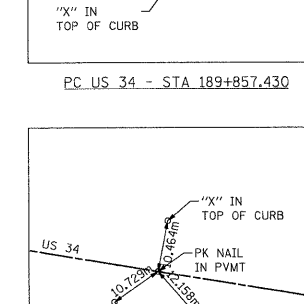
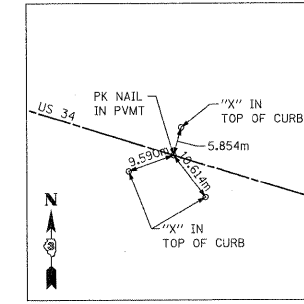
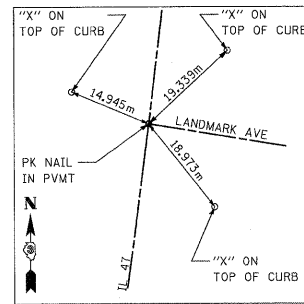
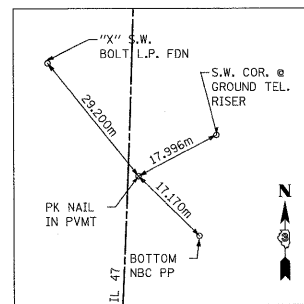
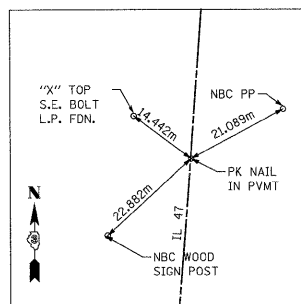
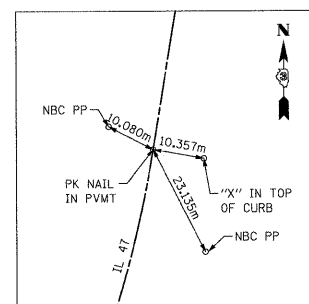
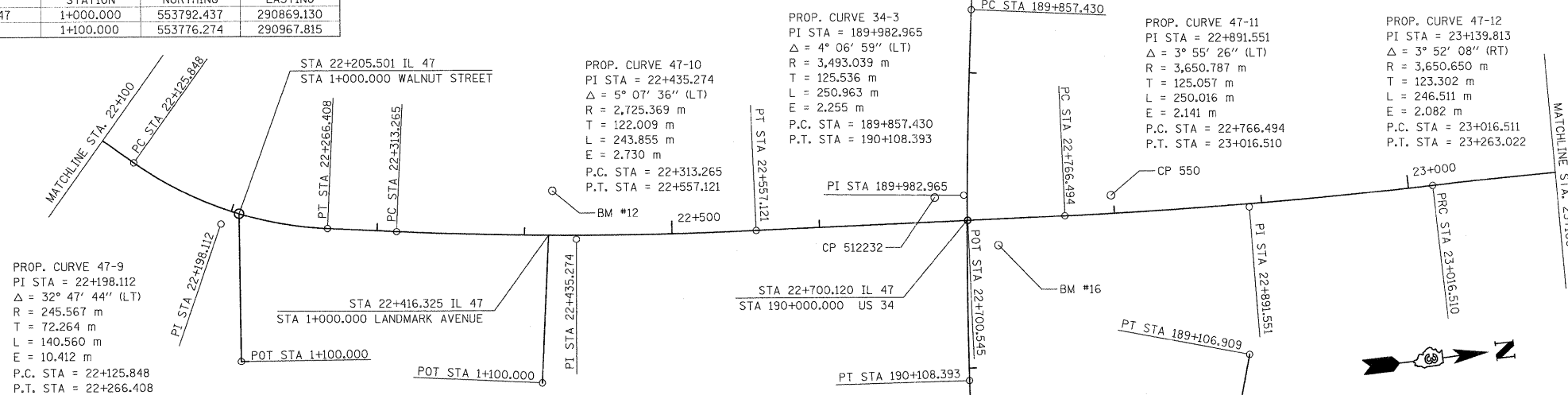
CONTROL POINT #512232

80 D SPIKE S OF HANDHOLE  
SW QUADRANT IL 47 / US 34  
STA. 22+678.979 - 16.570 LT.  
N 554055.271  
E 290875.435  
ELEV. 195.099



CONTROL POINT #550

80 D SPIKE N OF HANDHOLE  
BETWEEN ENTRANCES  
STA. 22+798.421 - 12.271 LT.  
N 554173.982  
E 290888.324  
ELEV. 195.005



REVISIONS

| NAME | DATE |
|------|------|
|      |      |
|      |      |
|      |      |
|      |      |
|      |      |
|      |      |

ILLINOIS DEPARTMENT OF TRANSPORTATION  
ALIGNMENT AND TIES  
FAP 326 (IL RTE. 47)  
4 OF 5  
DRAWN BY  
CHECKED BY  
DATE

FILE: 158alignsh4.dgn  
PLOTTED: 8/13/2011