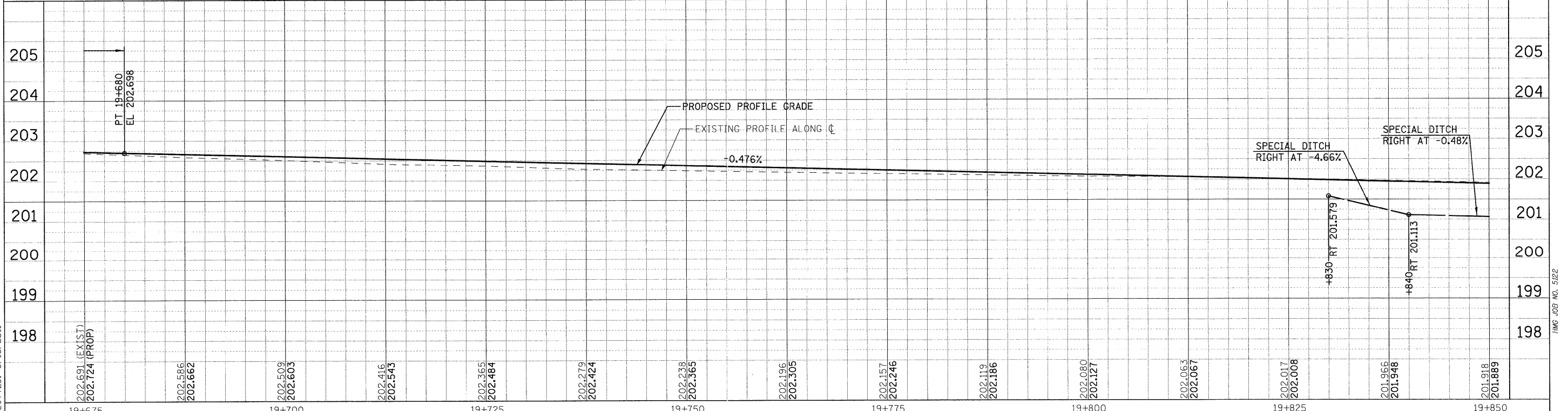
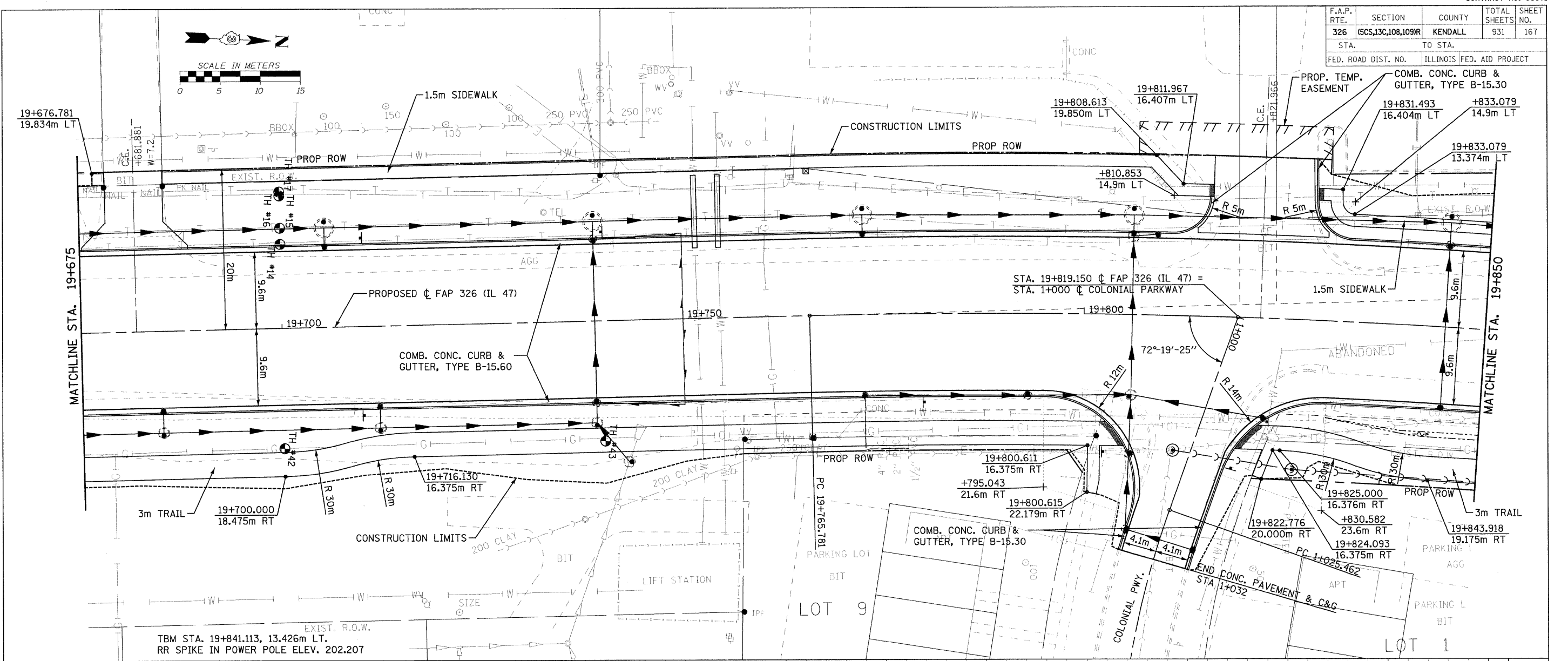
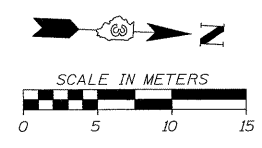


F.A.P. RTE.	SECTION	COUNTY	TOTAL SHEETS	SHEET NO.
326	(6S,13C,10B,109R)	KENDALL	931	167
STA. TO STA.				
FED. ROAD DIST. NO.		ILLINOIS FED. AID PROJECT		



FILE: 167pp47.11.dgn
PLOTTED: 8/13/2011

Sheet: 11
Angle: 92.6454
Color: P.L.47

HMG JOB NO. 5122