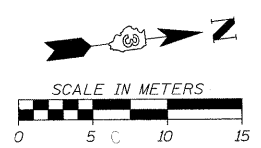


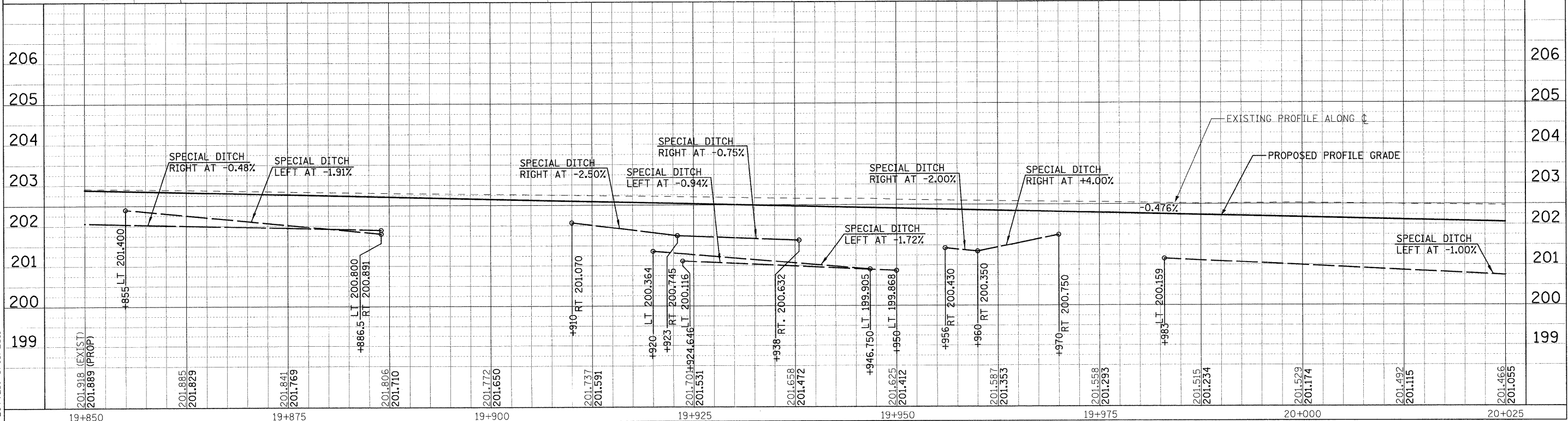
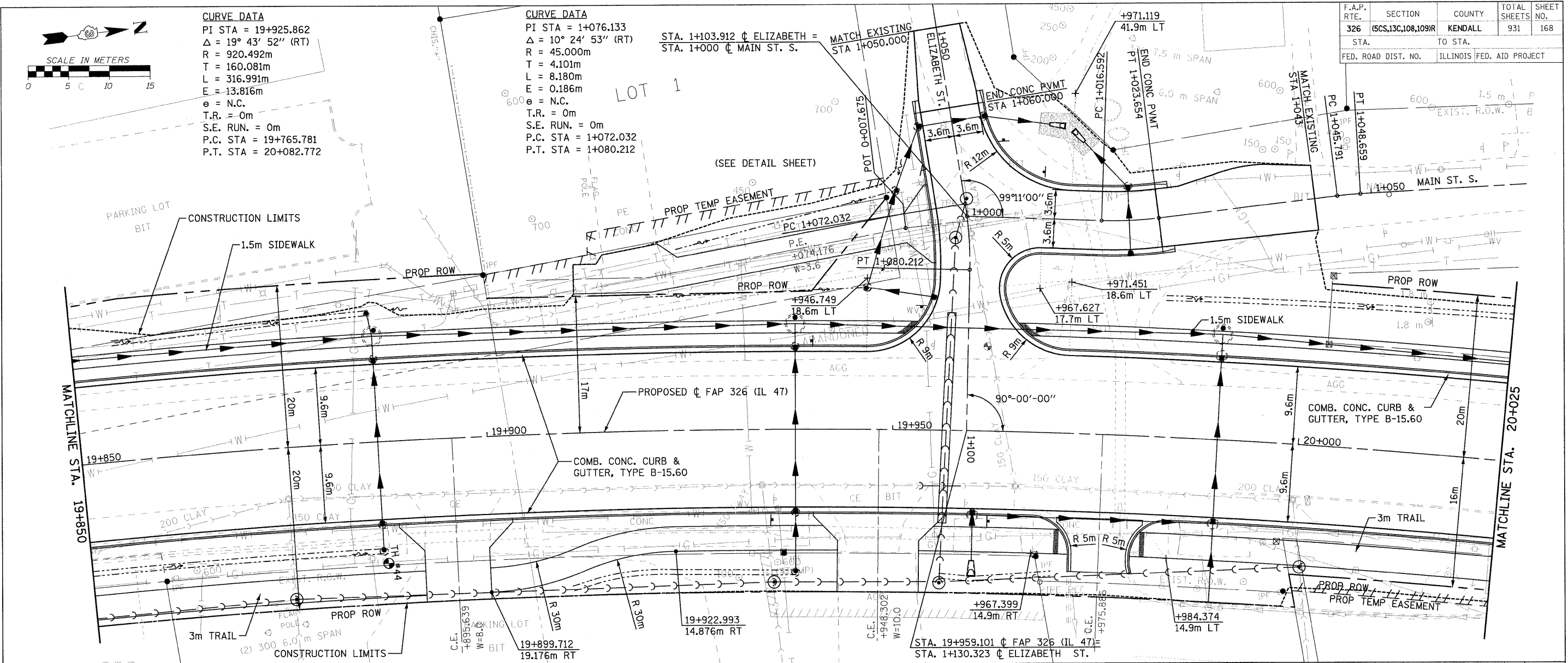
F.A.P. RTE.	SECTION	COUNTY	TOTAL SHEETS	SHEET NO.
326	(6CS,13C,108,109)R	KENDALL	931	168
STA.	TO STA.			
FED. ROAD DIST. NO.	ILLINOIS	FED. AID PROJECT		



CURVE DATA
 PI STA = 19+925.862
 $\Delta = 19^\circ 43' 52''$ (RT)
 R = 920.492m
 T = 160.081m
 L = 316.991m
 E = 13.816m
 e = N.C.
 T.R. = 0m
 S.E. RUN. = 0m
 P.C. STA = 19+765.781
 P.T. STA = 20+082.772

CURVE DATA
 PI STA = 1+076.133
 $\Delta = 10^\circ 24' 53''$ (RT)
 R = 45.000m
 T = 4.101m
 L = 8.180m
 E = 0.186m
 e = N.C.
 T.R. = 0m
 S.E. RUN. = 0m
 P.C. STA = 1+072.032
 P.T. STA = 1+080.212

STA. 1+103.912 ϕ ELIZABETH =
 STA. 1+000 ϕ MAIN ST. S.



FILE: 168pp47.12.dgn
 PLOTTED: 8/13/2011

Sheet: 12
 Angle: 83.2188
 Chain: P.LL47

HMG JOB NO. 5122