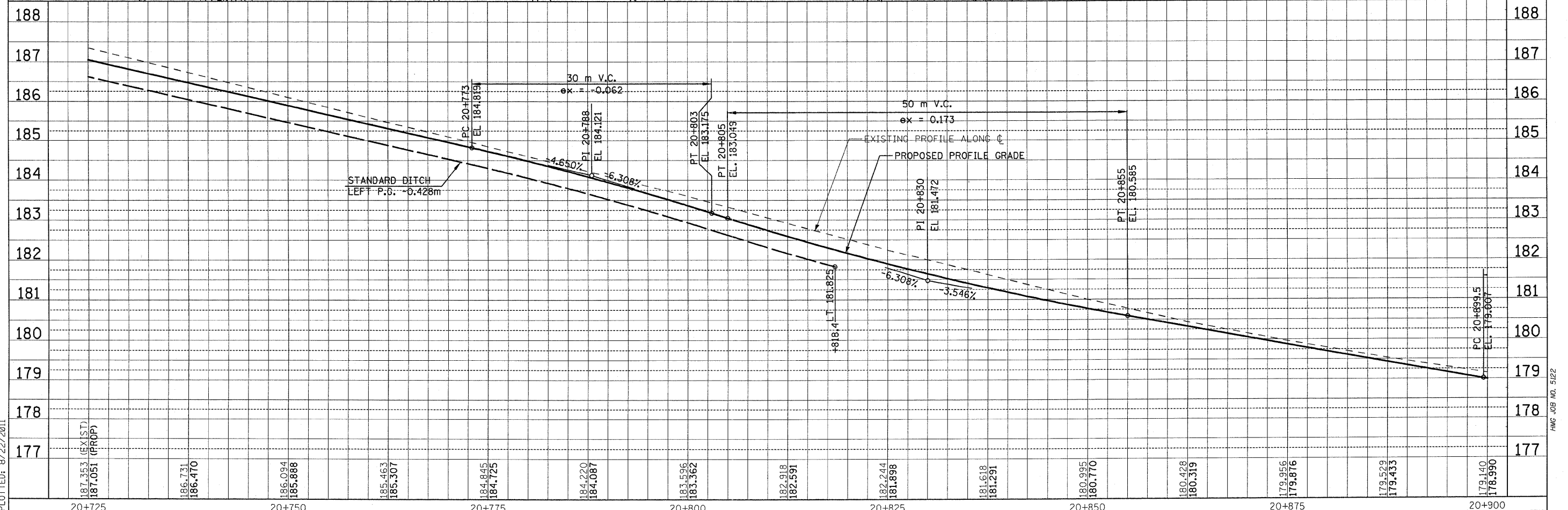
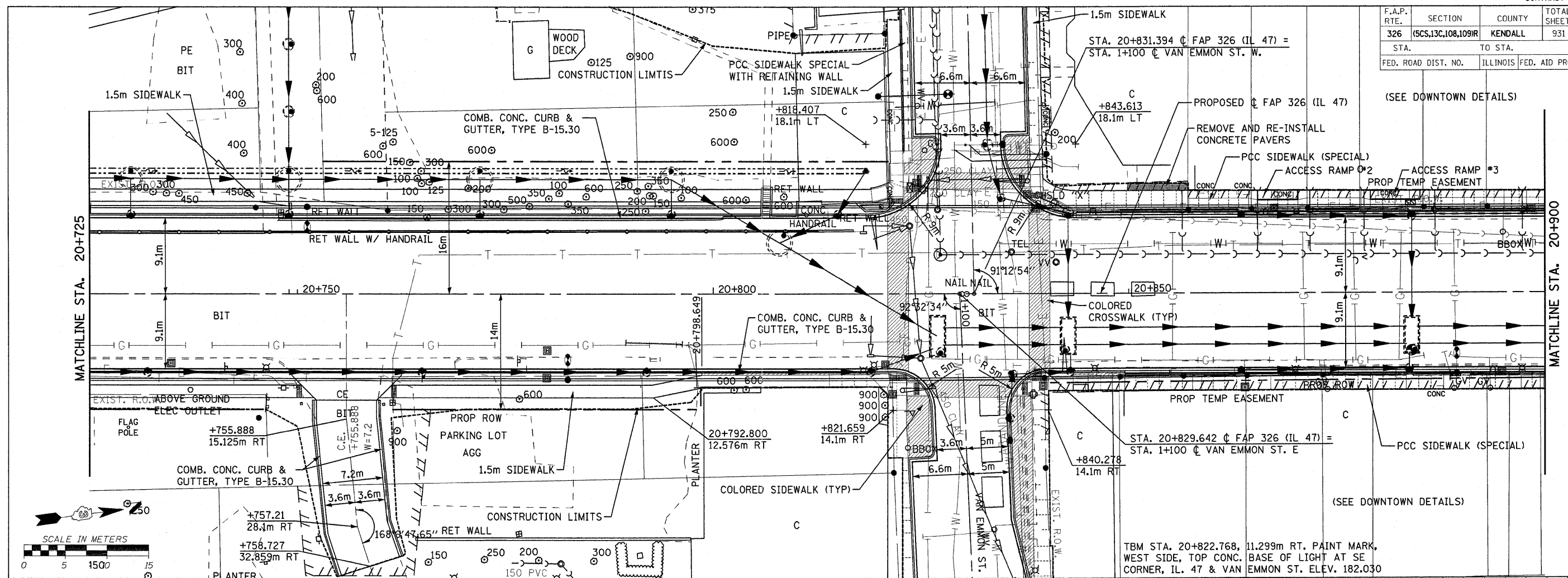


F.A.P. RTE.	SECTION	COUNTY	TOTAL SHEETS	SHEET NO.
326	(5CS,13C,108,109)R	KENDALL	931	173
STA.		TO STA.		
FED. ROAD DIST. NO.		ILLINOIS FED. AID PROJECT		



FILE: 173pp47_17.dgn
 PLOTTED: 8/22/2011
 Sheet: 17
 Date: 8/22/2011
 User: P3147

HMG JOB NO. 5122