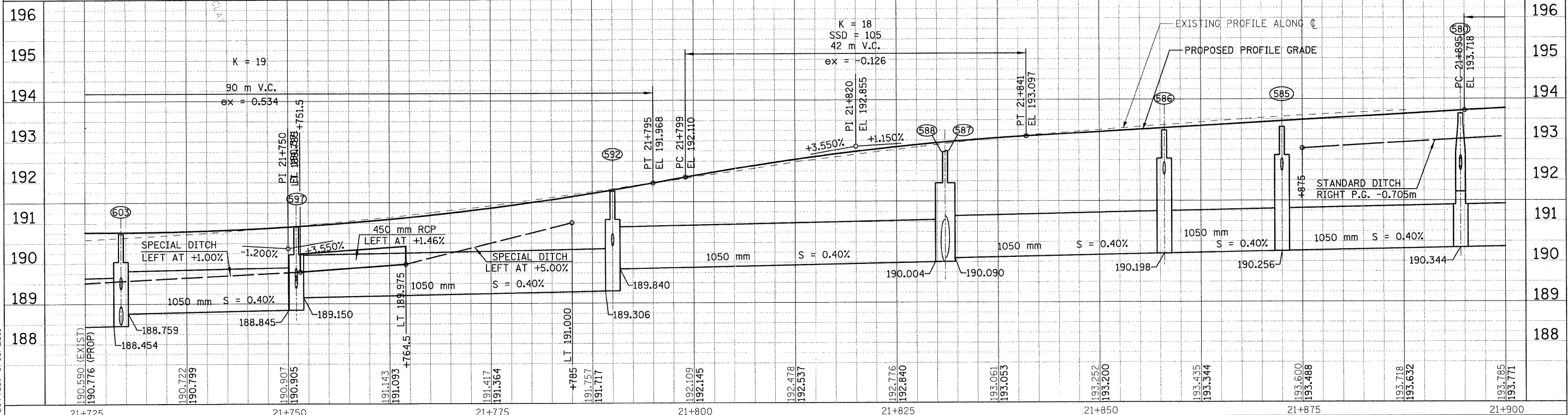
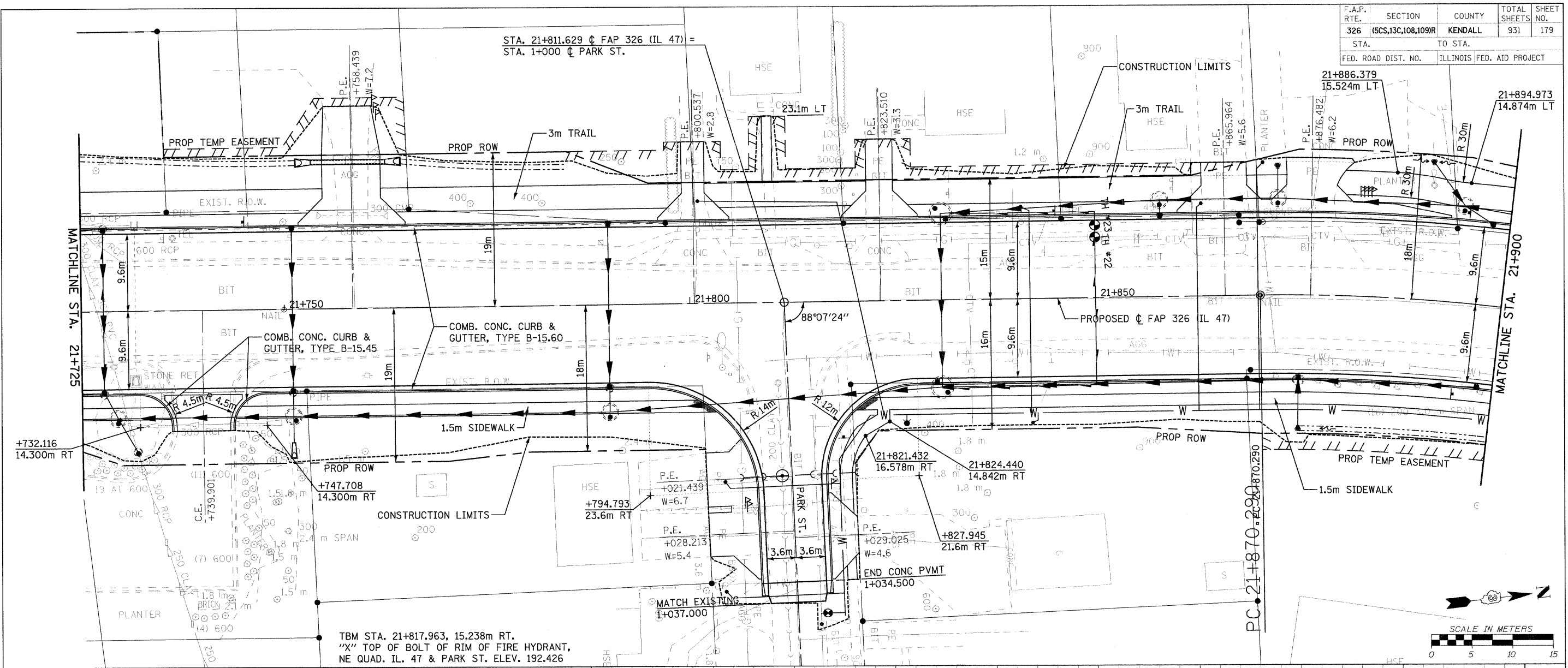


F.A.P. RTE.	SECTION	COUNTY	TOTAL SHEETS	SHEET NO.
326	(5CS,13C,108,109)R	KENDALL	931	179
STA. TO STA.				
FED. ROAD DIST. NO.		ILLINOIS FED. AID PROJECT		



FILE: 179pc47.23.dgn
 PLOTTED: 8/13/2011
 Sheet: 23
 Angle: 83.2868
 Chgfr: P_1L47

HMG 105 NO. 5122