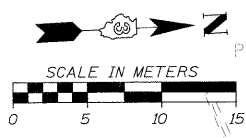
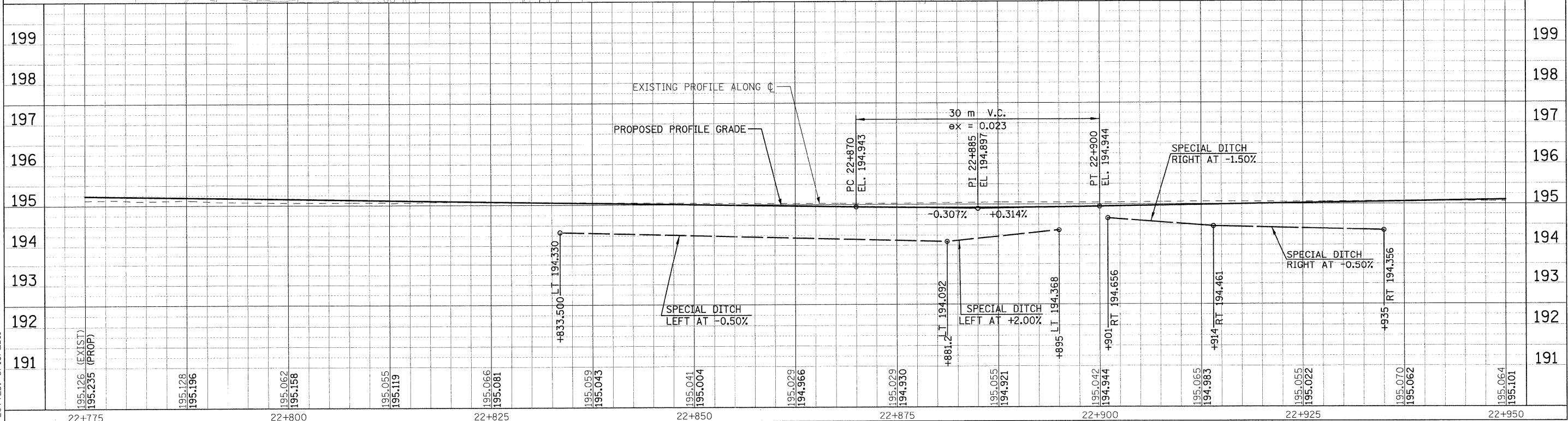
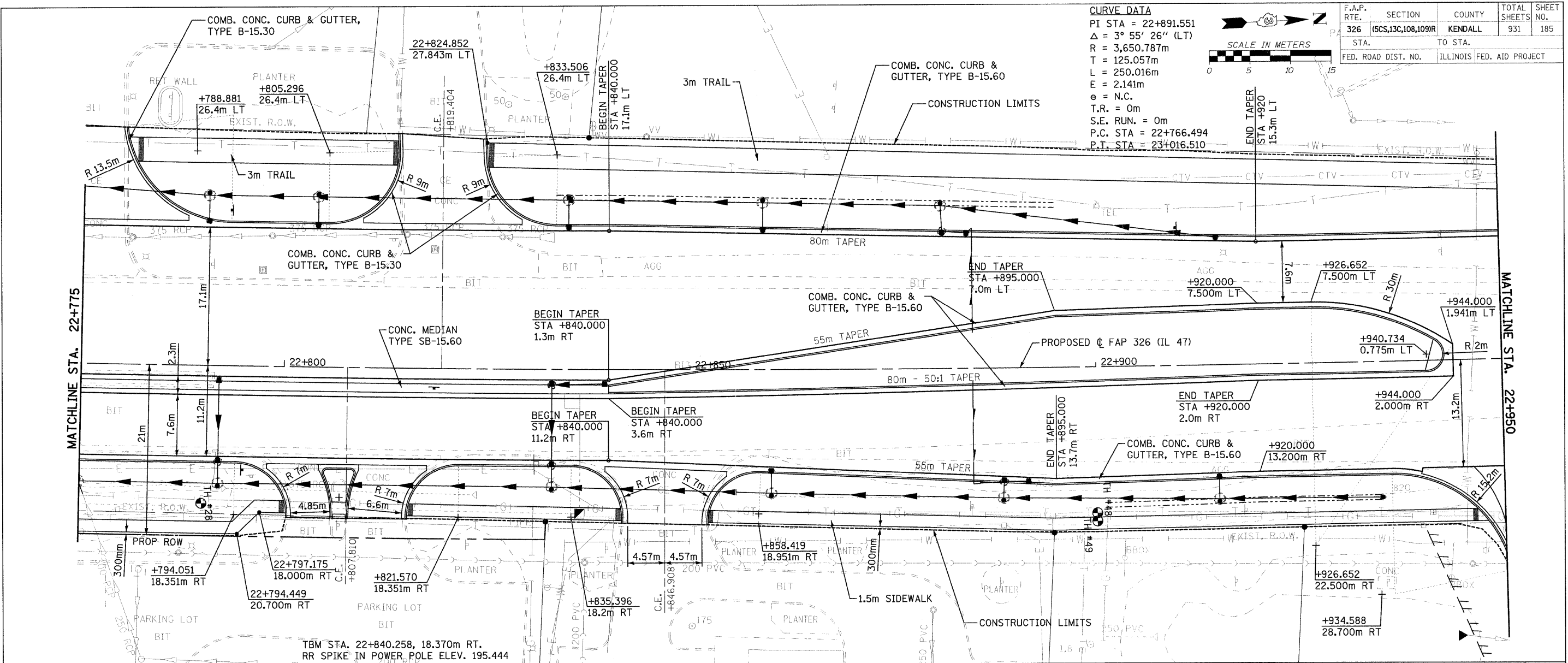


CURVE DATA

PI STA = 22+891.551
 $\Delta = 3^\circ 55' 26''$ (LT)
 R = 3,650.787m
 T = 125.057m
 L = 250.016m
 e = 2.141m
 e = N.C.
 T.R. = 0m
 S.E. RUN. = 0m
 P.C. STA = 22+766.494
 P.T. STA = 23+016.510



F.A.P. RTE.	SECTION	COUNTY	TOTAL SHEETS	SHEET NO.
326	(CS,13C,108,109)R	KENDALL	931	185
STA.	TO STA.			
FED. ROAD DIST. NO.	ILLINOIS	FED. AID PROJECT		



FILE: 185pp47_29.dgn
 PLOTTED: 8/13/2011
 Sheet: 29
 Angle: 07.3077
 Chnfr: P.11.47

HMG JOB NO. 5122