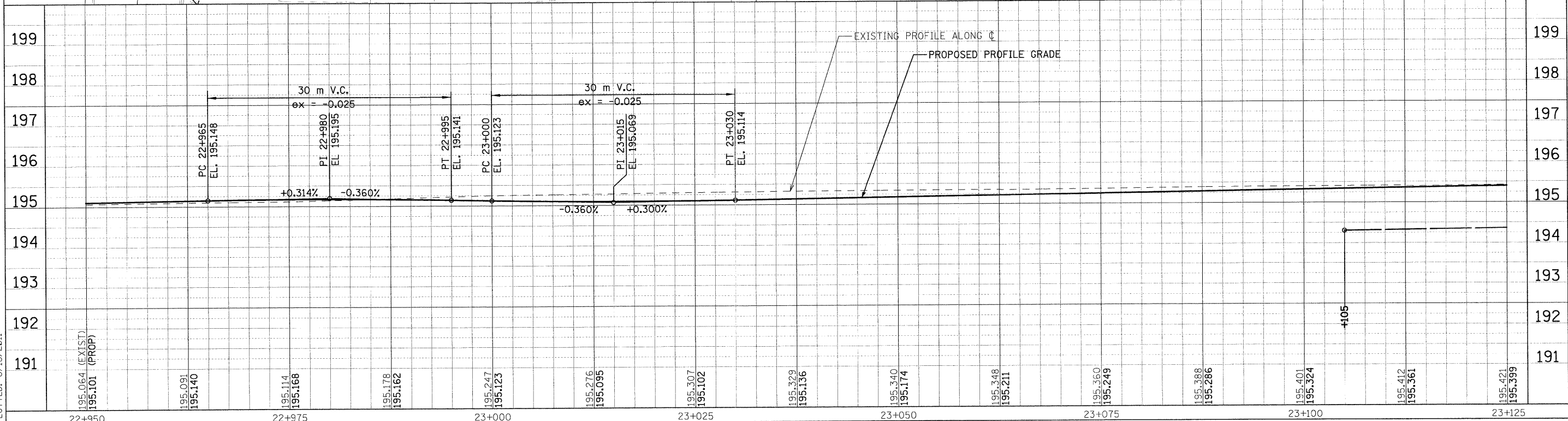
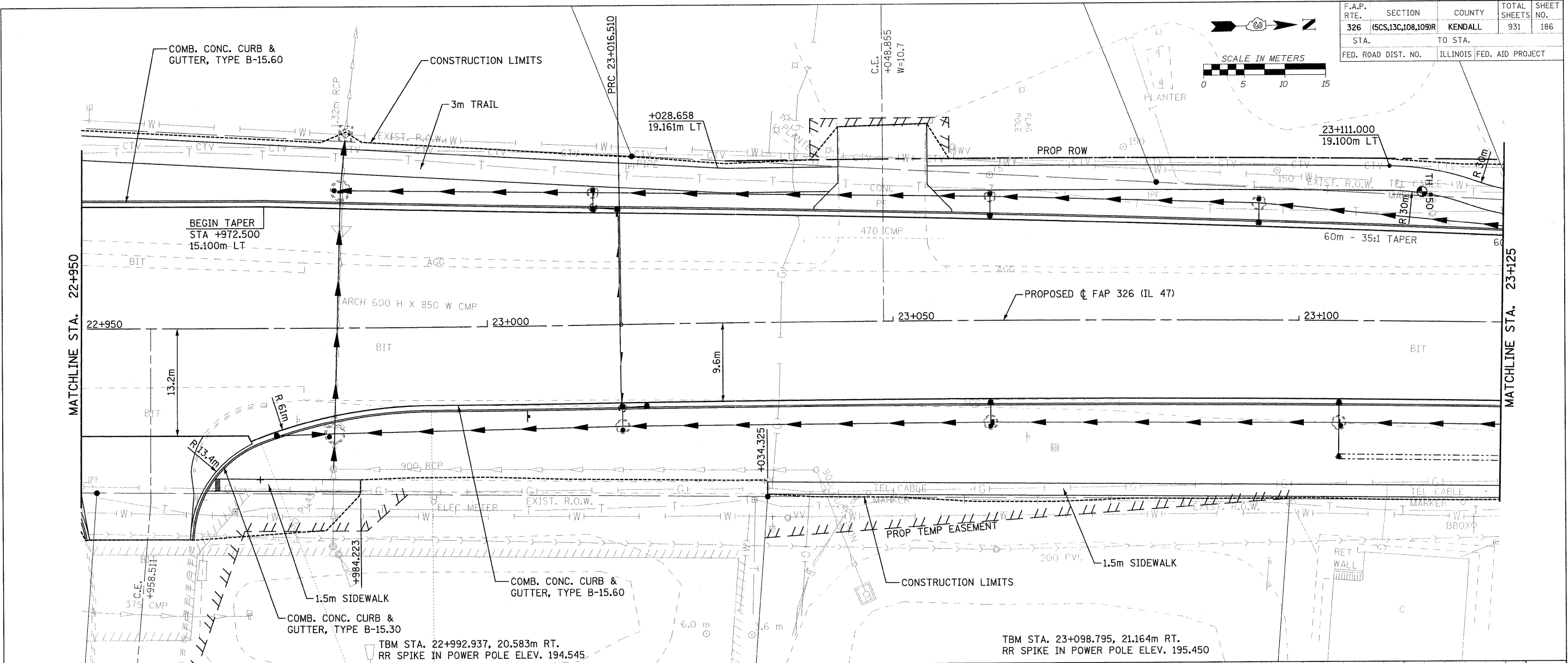
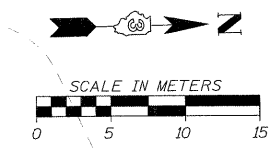


F.A.P. RTE.	SECTION	COUNTY	TOTAL SHEETS	SHEET NO.
326	(6S,13C,108,109)R	KENDALL	931	186
STA.	TO STA.			
FED. ROAD DIST. NO.	ILLINOIS FED. AID PROJECT			



FILE: 186pp47_30.dgn
 PLOTTED: 8/13/2011
 Sheet: 30
 Angle: 88.9986
 Chgfr: P.L.47

HMG JOB NO. 5122