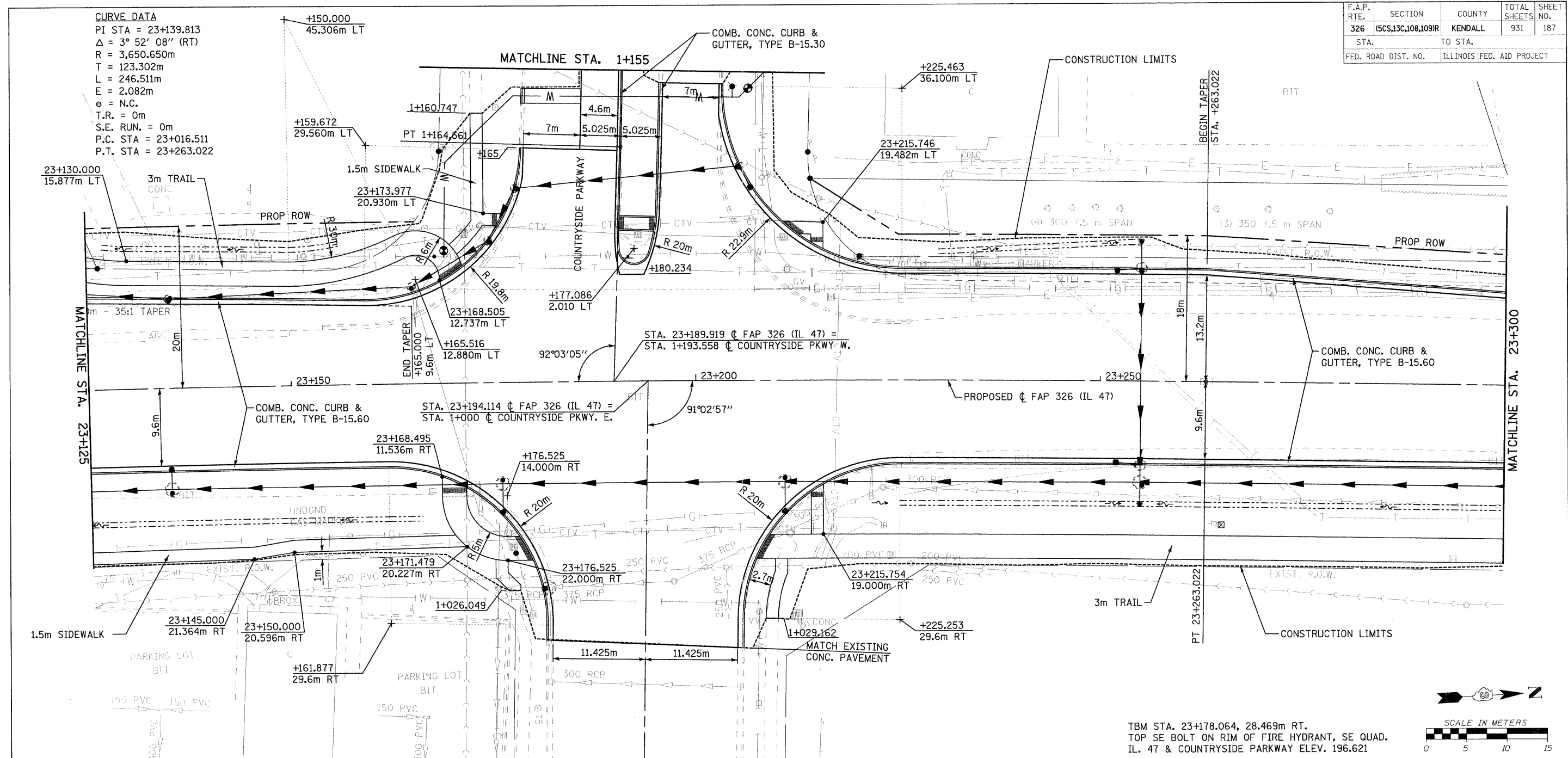
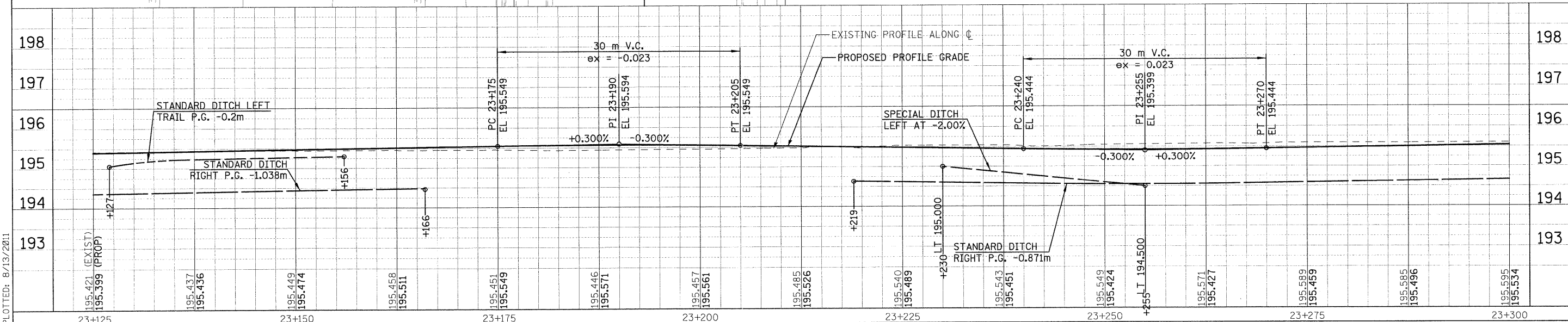
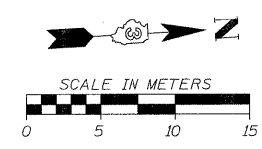


F.A.P. RTE.	SECTION	COUNTY	TOTAL SHEETS NO.	SHEET NO.
326	(SCS,13C,108,109)R	KENDALL	931	187
STA.	TO STA.			
FED. ROAD DIST. NO.	ILLINOIS	FED. AID PROJECT		

CURVE DATA
 PI STA = 23+139.813
 $\Delta = 3^\circ 52' 08''$ (RT)
 R = 3,650.650m
 T = 123.302m
 L = 246.511m
 E = 2.082m
 e = N.C.
 T.R. = 0m
 S.E. RUN. = 0m
 P.C. STA = 23+016.511
 P.T. STA = 23+263.022



TBM STA. 23+178.064, 28.469m RT.
 TOP SE BOLT ON RIM OF FIRE HYDRANT, SE QUAD.
 IL. 47 & COUNTRYSIDE PARKWAY ELEV. 196.621



FILE: 187pp47_31.dgn
 PLOTTED: 8/13/2011