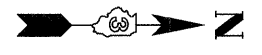


F.A.P. RTE.	SECTION	COUNTY	TOTAL SHEETS	SHEET NO.
326	(SCS,13C,108,109)R	KENDALL	931	280
STA.		TO STA.		
FED. ROAD DIST. NO.		ILLINOIS FED. AID PROJECT		



NOTES:

1. THE CLOSURE OF FOX STREET DURING THIS STAGE SHALL BE LIMITED TO NO MORE THAN 30 WORKING DAYS AND SHALL BE SCHEDULED SO THAT UPON COMPLETION, THE PROJECT SHALL TRANSITION TO STAGE 2. THIS SHEET DEPICTS THE SIGNING LAYOUT PRIOR TO CLOSURE OF FOX STREET. SEE THE "STAGE 1B TRAFFIC CONTROL - FOX STREET DETOUR" SHEETS FOR CHANGES/ADDITIONS TO THIS PLAN REQUIRED DURING THE CLOSURE OF FOX STREET.
2. A MINIMUM OF ONE LANE OF ACCESS TO FOUNTAINVIEW DRIVE SHALL BE MAINTAINED AT ALL TIMES THROUGH THE USE OF TEMPORARY AGGREGATE AND STAGING OF CONCRETE POURS.
3. A MINIMUM OF ONE LANE OF ACCESS WEST BOUND FROM BEAVER STREET TO IL 47 FOR THE FIRE STATION SHALL BE MAINTAINED AT ALL TIMES THROUGH THE USE OF TEMPORARY AGGREGATE AND STAGING OF CONCRETE POURS.



1	2	3	4	5	6	7	8	9	10	11	12	13	14

FILE: 280TC.plen_Stage1_01.dgn
PLOTTED: 8/11/2011

HMG JOB NO. 5122