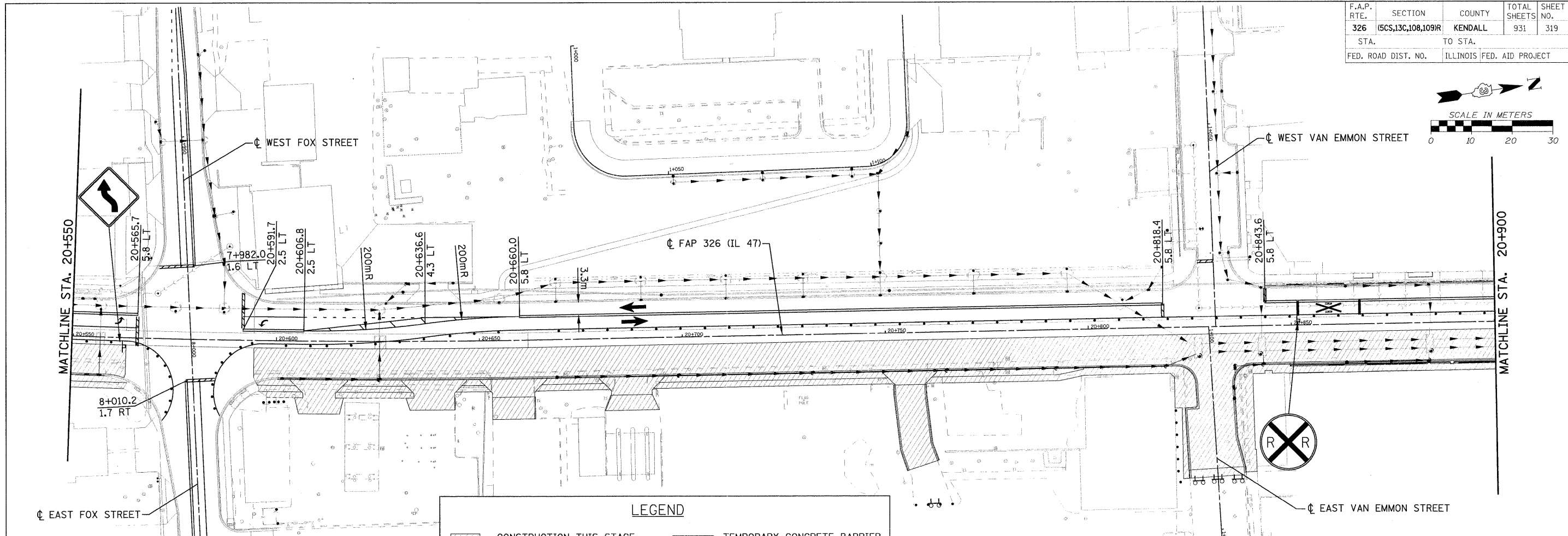
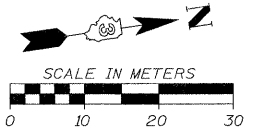
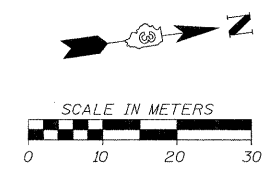
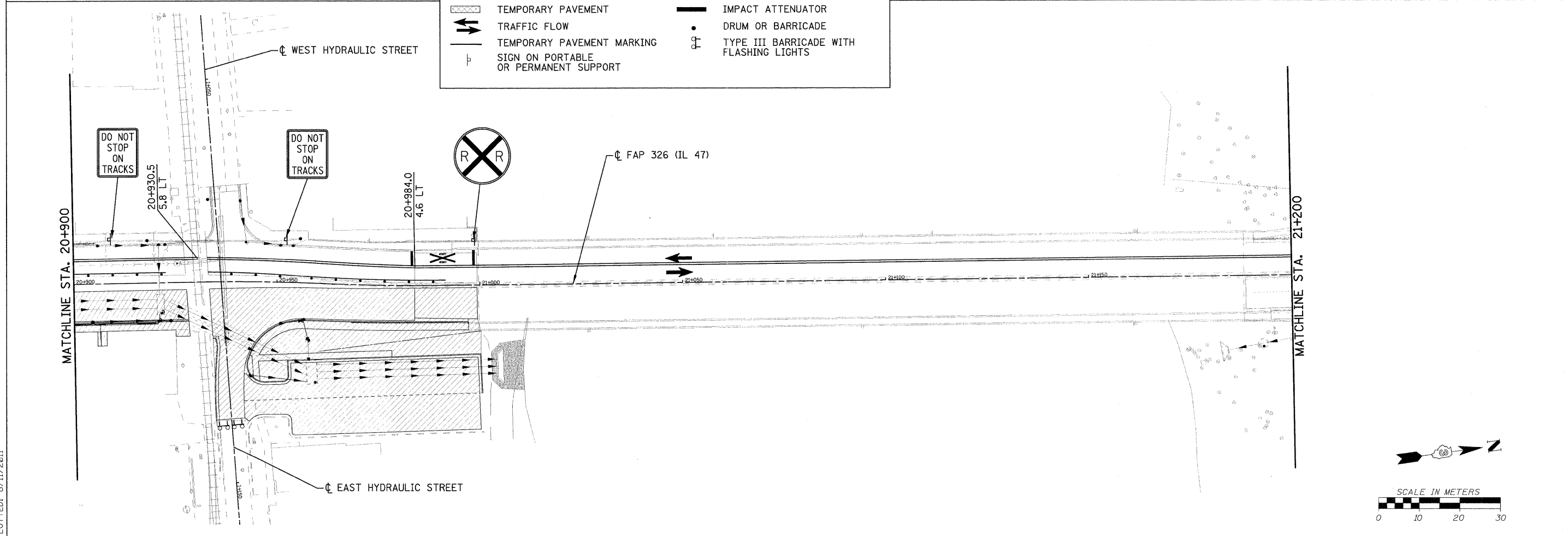


|                     |                    |                           |              |           |
|---------------------|--------------------|---------------------------|--------------|-----------|
| F.A.P. RTE.         | SECTION            | COUNTY                    | TOTAL SHEETS | SHEET NO. |
| 326                 | (5CS,13C,108,109R) | KENDALL                   | 931          | 319       |
| STA.                |                    | TO STA.                   |              |           |
| FED. ROAD DIST. NO. |                    | ILLINOIS FED. AID PROJECT |              |           |



**LEGEND**

|  |                                       |  |   |
|--|---------------------------------------|--|---|
|  | CONSTRUCTION THIS STAGE               |  | TEMPORARY CONCRETE BARRIER              |
|  | TEMPORARY PAVEMENT                    |  | IMPACT ATTENUATOR                       |
|  | TRAFFIC FLOW                          |  | DRUM OR BARRICADE                       |
|  | TEMPORARY PAVEMENT MARKING            |  | TYPE III BARRICADE WITH FLASHING LIGHTS |
|  | SIGN ON PORTABLE OR PERMANENT SUPPORT |  |   |



FILE: 319STAGE\_3\_47\_05.dgn  
PLOTTED: 8/11/2011

HMG JOB NO. 5122