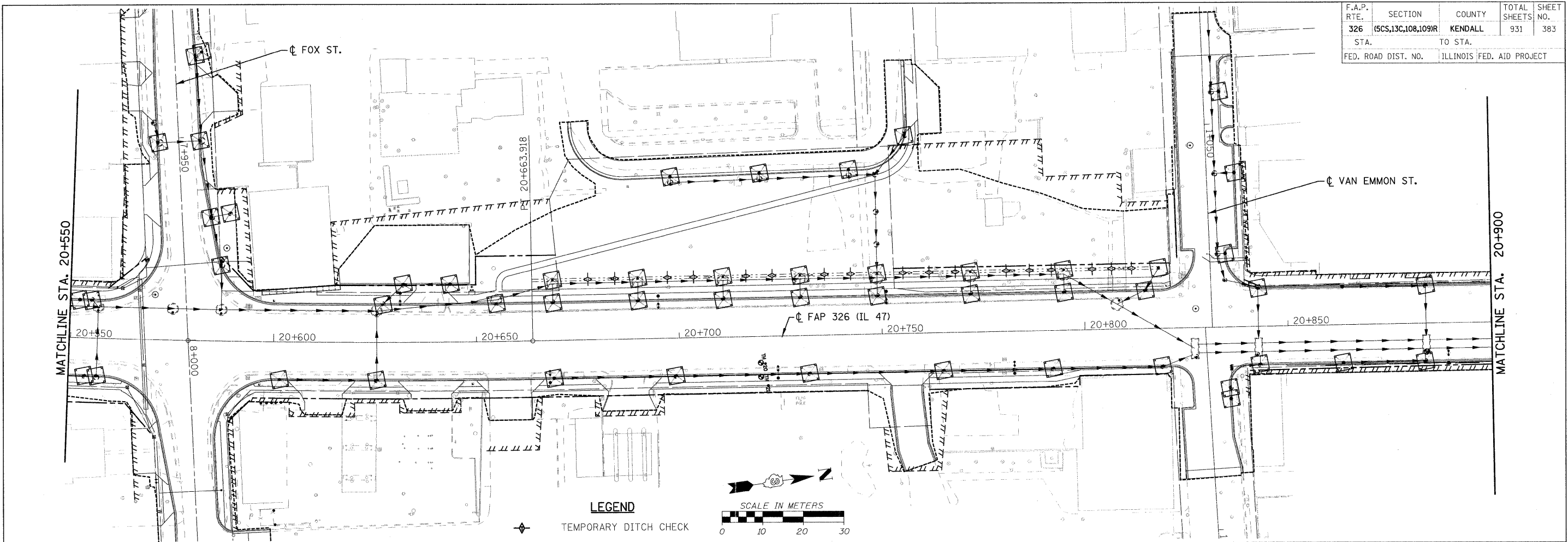
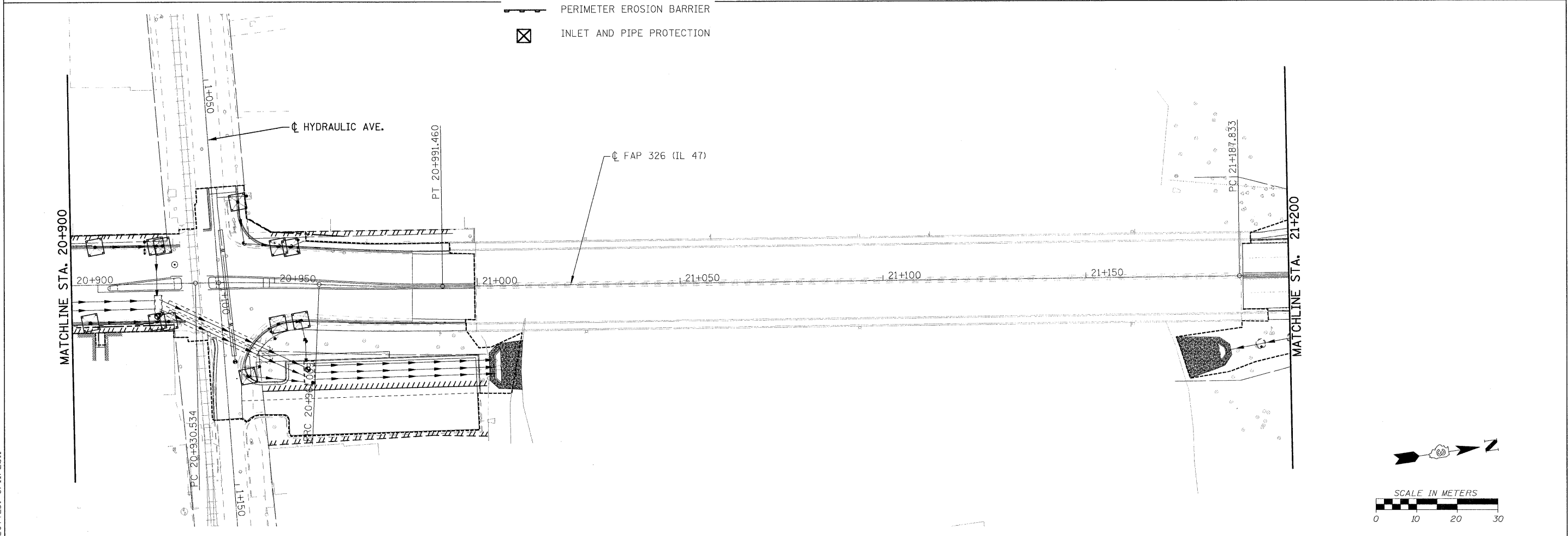


F.A.P. RTE.	SECTION	COUNTY	TOTAL SHEETS	SHEET NO.
326	(SCS,13C,108,109)R	KENDALL	931	383
STA.		TO STA.		
FED. ROAD DIST. NO.		ILLINOIS FED. AID PROJECT		



- LEGEND**
- TEMPORARY DITCH CHECK
 - PERIMETER EROSION BARRIER
 - INLET AND PIPE PROTECTION



FILE: 383swppp47_05.dgn
PLOTTED: 8/11/2011

HMG JOB NO. 5122