

F.A.P. RTE.	SECTION	COUNTY	TOTAL SHEETS	SHEET NO.
326	(5CS,13C,108,109)R	KENDALL	931	391
STA.		TO STA.		
FED. ROAD DIST. NO.		ILLINOIS FED. AID PROJECT		

**SO-DEEP**  
US, PC, I

**The Subsurface Utility Engineering Company**  
449 Munroe Falls Road  
Tallmadge, OH 44278  
(330) 794-4455

### So-Deep Test Hole Certification Form - Metric

© So-Deep 1988, 1994  
Condition of paving prior to work  
**NO PAVING**

So-Deep Corporate Office  
8397 Euclid Avenue  
Manassas Park, VA 20111  
(703)361-6005

Control # **SILC078**  
Test Hole # **1**  
Plan Scale **1:250**  
Sheet # **2**  
Proposed **GRADE CHANGE**  
Date **JULY 7, 2009**

City, County, State **CITY OF YORKVILLE, IL**  
Gen. Loc. **E SIDE S.R. 47, 180M± S OF S.R. 71**  
Recorded Size/Material/Type **100MM W/STL (NICOR) GAS LINE**  
Foreman/Truck#/Form By **J. CLINE / 219 / R. MOONEY**

B.M. 1 Elev = **226.971M**  
is **GIVEN**  
Description: **CHIS "X" SET TOP RIM SMH, 20M± RT OF CL STA 18+247±, S.R. 47**

B.M. 2 Elev = **223.400M**  
is **GIVEN**  
Description: **CHIS "X" SET TOP RIM SMH, 21M± LT OF CL STA 18+332±, S.R. 47**

Benchmarks check **BY 0.004M**  
Elevations are referenced to **B.M.#2**

Recorded Size/Type of utility **WAS FOUND**

There **WERE NOT** additional utilities in the test hole

The utility **WAS** in good condition

Paving Thickness and type **NO PAVING**

Color of ribbon installed **YELLOW**

Soil Type **MOIST BROWN**

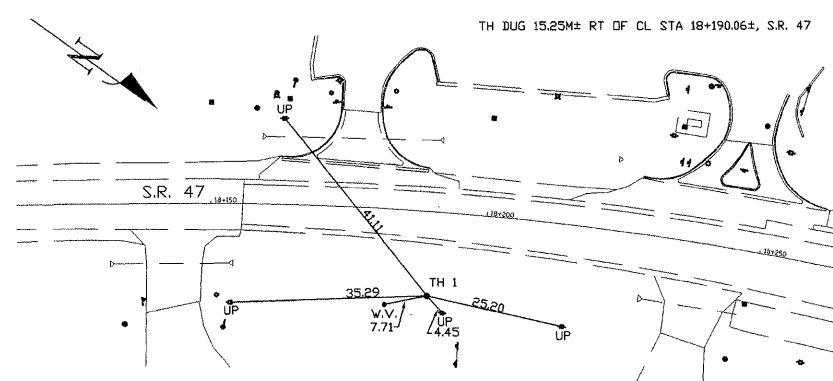
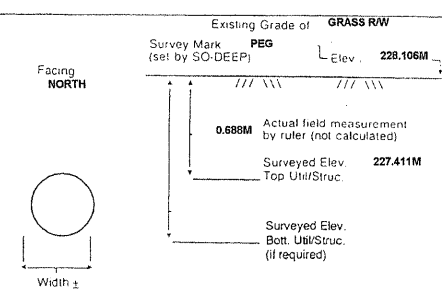
Field Condition **IN GRASS R/W**

T.H. tied to **PEG**

**121MM W/STL GAS LINE**  
Size/Material/Type  
Portion of pipe exposed for O.D. measurement:  
**FULL**

Remarks: **NONE**

SO-DEEP will attempt to use the BM#1 most applicable to your design. If however, BM#s differ by more than 0.015 m, resulting differences could cause design conflicts.



- |  |   |  |
|--|---|--|
| <ul style="list-style-type: none"> <li>RAW = Rights of Way</li> <li>N.T.S. = Not to Scale</li> <li>PLAS = Precast Concrete</li> <li>COND = Conduit</li> <li>CONC = Concrete</li> <li>O.D. = Outside Diameter</li> <li>C.I. = Cast Iron</li> <li>D.I. = Ductile Iron</li> <li>RPC = Rough Pour Concrete</li> <li>CL = Centerline</li> </ul> | <ul style="list-style-type: none"> <li>T.C. = Terra Cotta</li> <li>PLAS = Plastic</li> <li>BL = Base Line</li> <li>ELEC = Electric</li> <li>TELE = Telephone</li> <li>T.H. = Test Hole</li> <li>SW = Sidewalk</li> <li>DW = Driveway</li> <li>BM = Benchmark</li> <li>C.B. = Catch Basin</li> <li>GV = Gas Valve</li> </ul> | <ul style="list-style-type: none"> <li>○ = Sewer Manhole</li> <li>● = Test Hole</li> <li>⊕ = Fire Hydrant</li> <li>⊖ = Pole</li> <li>⊗ = Fence Line</li> <li>⊙ = Electric Manhole</li> <li>⊚ = T.S. = Traverse Station</li> <li>⊛ = Valve</li> <li>⊜ = Water Meter</li> <li>⊝ = Telephone Manhole</li> <li>⊞ = Telephone Pedestal</li> </ul> |
|--|---|--|

*Performing out-of-sight work...with vision™*  
All values are shown in meters (m) or millimeters (mm). To convert to feet multiply meters by 3.2808.  
Note: To eliminate mistakes and check this work, So-Deep suggests you scale and plot all dimensions onto the plans and review all elevations carefully. So-Deep is responsible only for information shown on our forms.

**SO-DEEP**  
US, PC, I

**The Subsurface Utility Engineering Company**  
449 Munroe Falls Road  
Tallmadge, OH 44278  
(330) 794-4455

### So-Deep Test Hole Certification Form - Metric

© So-Deep 1988, 1994  
Condition of paving prior to work  
**NO PAVING**

So-Deep Corporate Office  
8397 Euclid Avenue  
Manassas Park, VA 20111  
(703)361-6005

Control # **SILC078**  
Test Hole # **2**  
Plan Scale **1:250**  
Sheet # **32**  
Proposed **GRADE CHANGE**  
Date **JULY 7, 2009**

City, County, State **CITY OF YORKVILLE, IL**  
Gen. Loc. **E SIDE S.R. 47, @ INTR. OF S.R. 71**  
Recorded Size/Material/Type **100MM W/STL (NICOR) GAS LINE**  
Foreman/Truck#/Form By **J. CLINE / 219 / R. MOONEY**

B.M. 1 Elev = **226.971M**  
is **GIVEN**  
Description: **CHIS "X" SET TOP RIM SMH, 20M± RT OF CL STA 18+247±, S.R. 47**

B.M. 2 Elev = **223.400M**  
is **GIVEN**  
Description: **CHIS "X" SET TOP RIM SMH, 21M± LT OF CL STA 18+332±, S.R. 47**

Benchmarks check **BY 0.004M**  
Elevations are referenced to **B.M.#2**

Recorded Size/Type of utility **WAS FOUND**

There **WERE NOT** additional utilities in the test hole

The utility **WAS** in good condition

Paving Thickness and type **NO PAVING**

Color of ribbon installed **YELLOW**

Soil Type **MOIST BROWN**

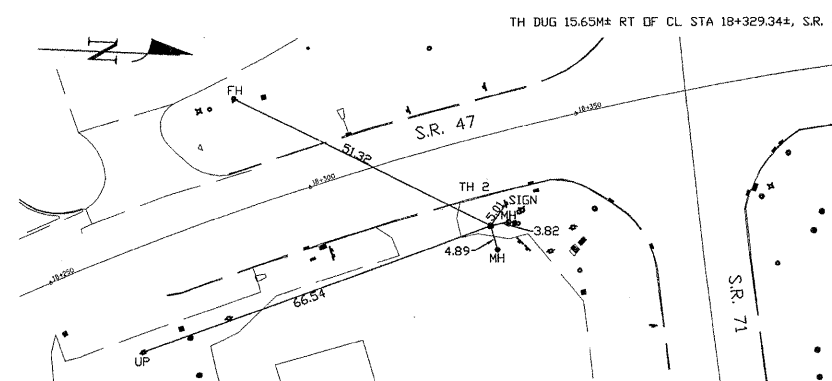
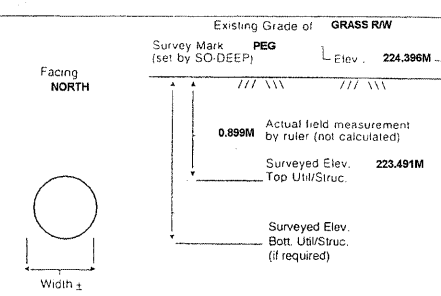
Field Condition **IN GRASS R/W**

T.H. tied to **PEG**

**121MM W/STL GAS LINE**  
Size/Material/Type  
Portion of pipe exposed for O.D. measurement:  
**FULL**

Remarks: **NONE**

SO-DEEP will attempt to use the BM#1 most applicable to your design. If however, BM#s differ by more than 0.015 m, resulting differences could cause design conflicts.



- |  |   |  |
|--|---|--|
| <ul style="list-style-type: none"> <li>RAW = Rights of Way</li> <li>N.T.S. = Not to Scale</li> <li>PLAS = Precast Concrete</li> <li>COND = Conduit</li> <li>CONC = Concrete</li> <li>O.D. = Outside Diameter</li> <li>C.I. = Cast Iron</li> <li>D.I. = Ductile Iron</li> <li>RPC = Rough Pour Concrete</li> <li>CL = Centerline</li> </ul> | <ul style="list-style-type: none"> <li>T.C. = Terra Cotta</li> <li>PLAS = Plastic</li> <li>BL = Base Line</li> <li>ELEC = Electric</li> <li>TELE = Telephone</li> <li>T.H. = Test Hole</li> <li>SW = Sidewalk</li> <li>DW = Driveway</li> <li>BM = Benchmark</li> <li>C.B. = Catch Basin</li> <li>GV = Gas Valve</li> </ul> | <ul style="list-style-type: none"> <li>○ = Sewer Manhole</li> <li>● = Test Hole</li> <li>⊕ = Fire Hydrant</li> <li>⊖ = Pole</li> <li>⊗ = Fence Line</li> <li>⊙ = Electric Manhole</li> <li>⊚ = T.S. = Traverse Station</li> <li>⊛ = Valve</li> <li>⊜ = Water Meter</li> <li>⊝ = Telephone Manhole</li> <li>⊞ = Telephone Pedestal</li> </ul> |
|--|---|--|

*Performing out-of-sight work...with vision™*  
All values are shown in meters (m) or millimeters (mm). To convert to feet multiply meters by 3.2808.  
Note: To eliminate mistakes and check this work, So-Deep suggests you scale and plot all dimensions onto the plans and review all elevations carefully. So-Deep is responsible only for information shown on our forms.

**SO-DEEP**  
US, PC, I

**The Subsurface Utility Engineering Company**  
449 Munroe Falls Road  
Tallmadge, OH 44278  
(330) 794-4455

### So-Deep Test Hole Certification Form - Metric

© So-Deep 1988, 1994  
Condition of paving prior to work  
**NO PAVING**

So-Deep Corporate Office  
8397 Euclid Avenue  
Manassas Park, VA 20111  
(703)361-6005

Control # **SILC078**  
Test Hole # **3**  
Plan Scale **1:250**  
Sheet # **32**  
Proposed **GRADE CHANGE**  
Date **JULY 7, 2009**

City, County, State **CITY OF YORKVILLE, IL**  
Gen. Loc. **W SIDE S.R. 47, 112M± N OF S.R. 71**  
Recorded Size/Material/Type **UNK. SIZE & TYPE (AT&T) TELE. LINE**  
Foreman/Truck#/Form By **J. CLINE / 219 / R. MOONEY**

B.M. 1 Elev = **221.600M**  
is **GIVEN**  
Description: **CHIS "X" SET TOP RIM SMH, 23M± LT OF CL STA 18+404±, S.R. 47**

B.M. 2 Elev = **223.400M**  
is **GIVEN**  
Description: **CHIS "X" SET TOP RIM SMH, 21M± LT OF CL STA 18+332±, S.R. 47**

Benchmarks check **BY 0.004M**  
Elevations are referenced to **B.M.#1**

Recorded Size/Type of utility **WAS FOUND**

There **WERE NOT** additional utilities in the test hole

The utility **WAS** in good condition

Paving Thickness and type **NO PAVING**

Color of ribbon installed **ORANGE**

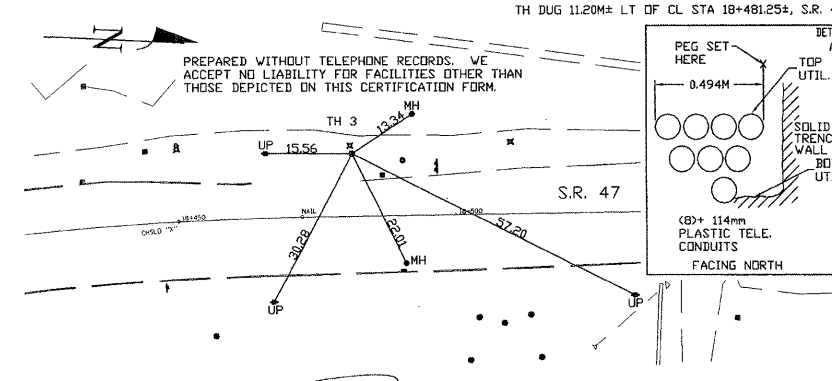
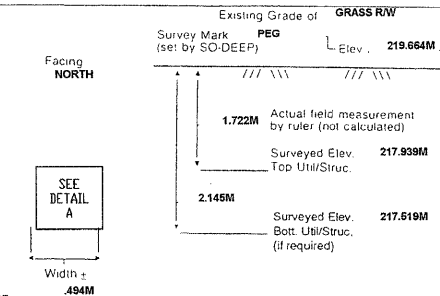
Soil Type **MOIST BROWN**

Field Condition **IN GRASS R/W**

T.H. tied to **PEG**

**(8) 114MM PLASTIC TELE. CONDUITS\***  
Size/Material/Type  
Portion of pipe exposed for O.D. measurement:  
**FULL**

Remarks: **\* CREW WAS UNABLE TO OBTAIN A BOTTOM ELEVATION OF THE TELE. FACILITIES DUE TO SOLID TRENCH WALL AT THIS LOCATION. ADDITIONAL CONDUITS MAY BE PRESENT BUT LIE HIDDEN FROM VIEW.**



- |  |   |  |
|--|---|--|
| <ul style="list-style-type: none"> <li>RAW = Rights of Way</li> <li>N.T.S. = Not to Scale</li> <li>PLAS = Precast Concrete</li> <li>COND = Conduit</li> <li>CONC = Concrete</li> <li>O.D. = Outside Diameter</li> <li>C.I. = Cast Iron</li> <li>D.I. = Ductile Iron</li> <li>RPC = Rough Pour Concrete</li> <li>CL = Centerline</li> </ul> | <ul style="list-style-type: none"> <li>T.C. = Terra Cotta</li> <li>PLAS = Plastic</li> <li>BL = Base Line</li> <li>ELEC = Electric</li> <li>TELE = Telephone</li> <li>T.H. = Test Hole</li> <li>SW = Sidewalk</li> <li>DW = Driveway</li> <li>BM = Benchmark</li> <li>C.B. = Catch Basin</li> <li>GV = Gas Valve</li> </ul> | <ul style="list-style-type: none"> <li>○ = Sewer Manhole</li> <li>● = Test Hole</li> <li>⊕ = Fire Hydrant</li> <li>⊖ = Pole</li> <li>⊗ = Fence Line</li> <li>⊙ = Electric Manhole</li> <li>⊚ = T.S. = Traverse Station</li> <li>⊛ = Valve</li> <li>⊜ = Water Meter</li> <li>⊝ = Telephone Manhole</li> <li>⊞ = Telephone Pedestal</li> </ul> |
|--|---|--|

*Performing out-of-sight work...with vision™*  
All values are shown in meters (m) or millimeters (mm). To convert to feet multiply meters by 3.2808.  
Note: To eliminate mistakes and check this work, So-Deep suggests you scale and plot all dimensions onto the plans and review all elevations carefully. So-Deep is responsible only for information shown on our forms.

REVISIONS		ILLINOIS DEPARTMENT OF TRANSPORTATION
NAME	DATE	
		<b>UTILITY TEST HOLE RECORD</b>  DRAWN BY _____ CHECKED BY _____  DATE _____

FILE: 391-406-Utility Test Hole sheets.dgn  
PLOTTED: 8/11/2011