

F.A.P. RTE.	SECTION	COUNTY	TOTAL SHEETS	SHEET NO.
326	(5CS,13C,108,109R	KENDALL	931	392
STA.	TO STA.		6	
FED. ROAD DIST. NO.	ILLINOIS FED. AID PROJECT		GRADE CHANGE	



The Subsurface Utility Engineering Company
449 Munroe Falls Road
Tallmadge, OH 44278
(330) 794-4455

So-Deep Test Hole Certification Form - Metric

© So-Deep 1988, 1994

City, County, State **CITY OF YORKVILLE, IL**
Gen. Loc. **E SIDE S.R. 47, 109M± N OF S.R. 71**
Recorded Size/Material/Type **100MM WSTL (NICOR) GAS LINE**
Foreman/Truck#/Form By **J. CLINE / 219 / R. MOONEY**

Condition of paving prior to work **NO PAVING**

B.M. 1 Elev. = **221.600M**
is **GIVEN**

Description: **CHIS "X" SET TOP RIM SMH, 23M± LT OF CL STA 18+404±, S.R. 47**

B.M. 2 Elev. = **223.400M**
is **GIVEN**

Description: **CHIS "X" SET TOP RIM SMH, 21M± LT OF CL STA 18+332±, S.R. 47**

Benchmarks check **BY 0.004M**
Elevations are referenced to **B.M.#1**

Recorded Size/Type of utility **WAS FOUND**

There **WERE NOT** additional utilities in the test hole

The utility **WAS** in good condition.

Paving Thickness and type **NO PAVING**

Color of ribbon installed **YELLOW**

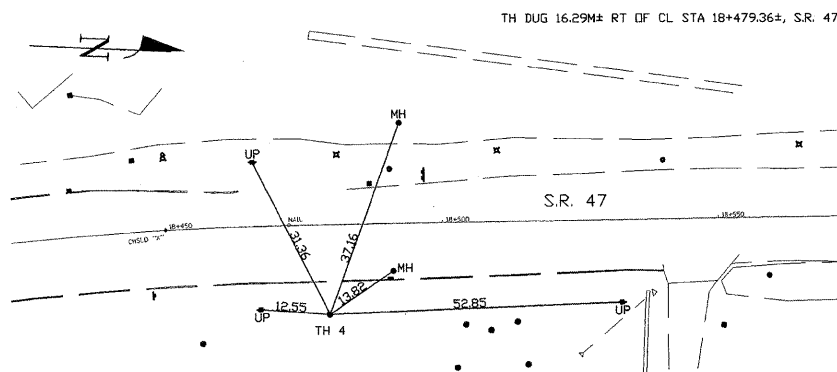
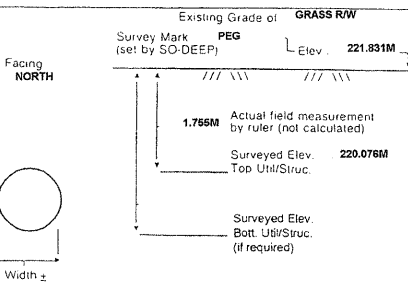
Soil Type **MOIST BROWN**

Field Condition **IN GRASS R/W**

T.H. tied to **PEG**

121MM WSTL GAS LINE
Size/Material/Type
Portion of pipe exposed for O.D. measurement:
FULL

Remarks: **NONE**



- | | | |
|---------------------------|--------------------|-----------------------------|
| R/W = Rights of Way | T.C. = Terra Cotta | ○ = Sewer Manhole |
| N.T.S. = Not to Scale | PLAS. = Plastic | ● = Test Hole |
| * = Not Shown on Plan | BL = Base Line | □ = Fire Hydrant |
| PCC = Precast Concrete | ELEC. = Electric | ○ = Pole |
| COND. = Conduit | TELE = Telephone | ○ = Telephone Manhole |
| CONC. = Concrete | T.H. = Test Hole | ○ = T.S. = Traverse Station |
| O.D. = Outside Diameter | SW = Sidewalk | ○ = Valve |
| C.I. = Cast Iron | DW = Driveway | ○ = Water Meter |
| D.I. = Ductile Iron | BM = Benchmark | ○ = Telephone Manhole |
| RPC = Rough Pour Concrete | C.B. = Catch Basin | □ = Telephone Pedestal |
| CL = Centerline | GV = Gas Valve | |

SO-DEEP will attempt to use the BM#1 most applicable to your design. If however, BMs differ by more than 0.015 m, resulting differences could cause design conflicts.



The Subsurface Utility Engineering Company
449 Munroe Falls Road
Tallmadge, OH 44278
(330) 794-4455

So-Deep Test Hole Certification Form - Metric

© So-Deep 1988, 1994

City, County, State **CITY OF YORKVILLE, IL**
Gen. Loc. **E SIDE S.R. 47, 213M± N OF S.R. 71**
Recorded Size/Material/Type **100MM WSTL (NICOR) GAS LINE**
Foreman/Truck#/Form By **J. CLINE / 219 / R. MOONEY**

Condition of paving prior to work **NO PAVING**

B.M. 1 Elev. = **221.600M**
is **GIVEN**

Description: **CHIS "X" SET TOP RIM SMH, 23M± LT OF CL STA 18+404±, S.R. 47**

B.M. 2 Elev. = **223.400M**
is **GIVEN**

Description: **CHIS "X" SET TOP RIM SMH, 21M± LT OF CL STA 18+332±, S.R. 47**

Benchmarks check **BY 0.004M**
Elevations are referenced to **B.M.#1**

Recorded Size/Type of utility **WAS FOUND**

There **WERE NOT** additional utilities in the test hole

The utility **WAS** in good condition.

Paving Thickness and type **NO PAVING**

Color of ribbon installed **YELLOW**

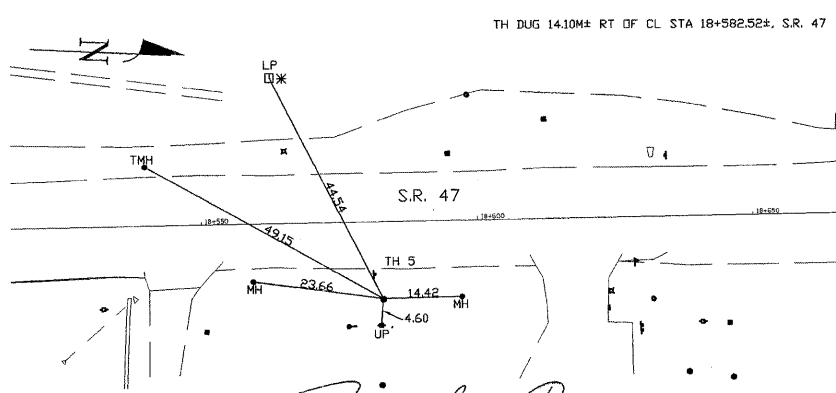
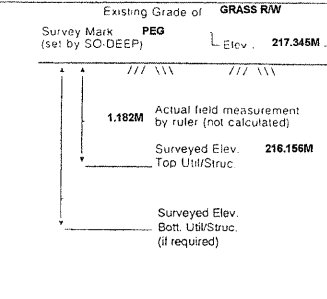
Soil Type **MOIST BROWN**

Field Condition **IN GRASS R/W**

T.H. tied to **PEG**

121MM WSTL GAS LINE
Size/Material/Type
Portion of pipe exposed for O.D. measurement:
FULL

Remarks: **NONE**



- | | | |
|---------------------------|--------------------|-----------------------------|
| R/W = Rights of Way | T.C. = Terra Cotta | ○ = Sewer Manhole |
| N.T.S. = Not to Scale | PLAS. = Plastic | ● = Test Hole |
| * = Not Shown on Plan | BL = Base Line | □ = Fire Hydrant |
| PCC = Precast Concrete | ELEC. = Electric | ○ = Pole |
| COND. = Conduit | TELE = Telephone | ○ = Telephone Manhole |
| CONC. = Concrete | T.H. = Test Hole | ○ = T.S. = Traverse Station |
| O.D. = Outside Diameter | SW = Sidewalk | ○ = Valve |
| C.I. = Cast Iron | DW = Driveway | ○ = Water Meter |
| D.I. = Ductile Iron | BM = Benchmark | ○ = Telephone Manhole |
| RPC = Rough Pour Concrete | C.B. = Catch Basin | □ = Telephone Pedestal |
| CL = Centerline | GV = Gas Valve | |

SO-DEEP will attempt to use the BM#1 most applicable to your design. If however, BMs differ by more than 0.015 m, resulting differences could cause design conflicts.



The Subsurface Utility Engineering Company
449 Munroe Falls Road
Tallmadge, OH 44278
(330) 794-4455

So-Deep Test Hole Certification Form - Metric

© So-Deep 1988, 1994

City, County, State **CITY OF YORKVILLE, IL**
Gen. Loc. **E SIDE S.R. 47, 400M± N OF S.R. 71**
Recorded Size/Material/Type **100MM WSTL (NICOR) GAS LINE**
Foreman/Truck#/Form By **J. CLINE / 219 / R. MOONEY**

Condition of paving prior to work **NO PAVING**

B.M. 1 Elev. = **213.648M**
is **GIVEN**

Description: **CHIS "X" SET TOP RIM SMH, 24M± LT OF CL STA 18+910±, S.R. 47**

B.M. 2 Elev. = **212.941M**
is **GIVEN**

Description: **CHIS "X" SET TOP RIM SMH, 24M± LT OF CL STA 18+842±, S.R. 47**

Benchmarks check **BY 0.006M**
Elevations are referenced to **B.M.#2**

Recorded Size/Type of utility **WAS FOUND**

There **WERE NOT** additional utilities in the test hole

The utility **WAS** in good condition.

Paving Thickness and type **NO PAVING**

Color of ribbon installed **YELLOW**

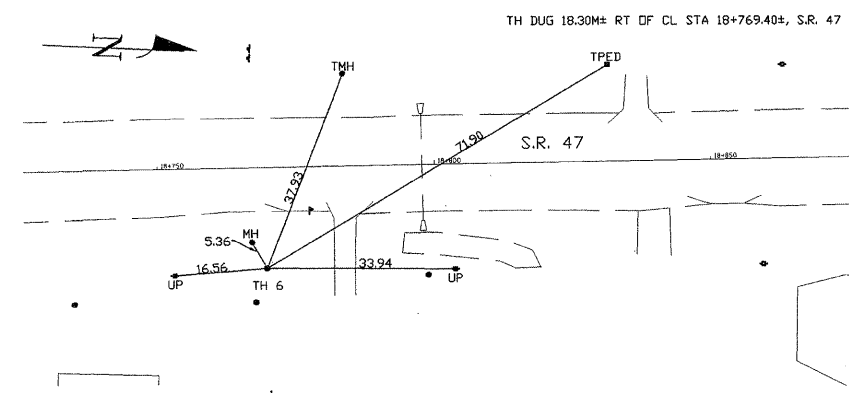
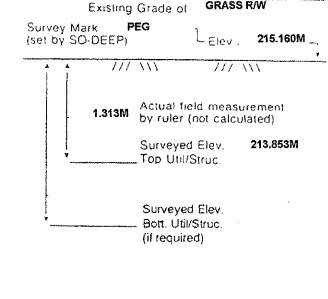
Soil Type **MOIST BROWN**

Field Condition **IN GRASS R/W**

T.H. tied to **PEG**

121MM PLASTIC COATED STL. GAS LINE
Size/Material/Type
Portion of pipe exposed for O.D. measurement:
FULL

Remarks: **NONE**



- | | | |
|---------------------------|--------------------|-----------------------------|
| R/W = Rights of Way | T.C. = Terra Cotta | ○ = Sewer Manhole |
| N.T.S. = Not to Scale | PLAS. = Plastic | ● = Test Hole |
| * = Not Shown on Plan | BL = Base Line | □ = Fire Hydrant |
| PCC = Precast Concrete | ELEC. = Electric | ○ = Pole |
| COND. = Conduit | TELE = Telephone | ○ = Telephone Manhole |
| CONC. = Concrete | T.H. = Test Hole | ○ = T.S. = Traverse Station |
| O.D. = Outside Diameter | SW = Sidewalk | ○ = Valve |
| C.I. = Cast Iron | DW = Driveway | ○ = Water Meter |
| D.I. = Ductile Iron | BM = Benchmark | ○ = Telephone Manhole |
| RPC = Rough Pour Concrete | C.B. = Catch Basin | □ = Telephone Pedestal |
| CL = Centerline | GV = Gas Valve | |

SO-DEEP will attempt to use the BM#1 most applicable to your design. If however, BMs differ by more than 0.015 m, resulting differences could cause design conflicts.

FILE: 391-406-Utility Test Hole sheets.dgn
PLOTTED: 8/11/2011

REVISIONS		ILLINOIS DEPARTMENT OF TRANSPORTATION
NAME	DATE	
		UTILITY TEST HOLE RECORD
		DRAWN BY
		CHECKED BY
		DATE