

F.A.P. RTE.	SECTION	COUNTY	TOTAL SHEETS	SHEET NO.
326	(5CS,13C,108,109R)	KENDALL	931	400
STA.	TO STA.			
FED. ROAD DIST. NO.	ILLINOIS	FED. AID PROJECT		

SO-DEEP US, PC The Subsurface Utility Engineering Company
 449 Munroe Falls Road
 Tallmadge, OH 44278
 (330) 794-4455

So-Deep Test Hole Certification Form - Metric

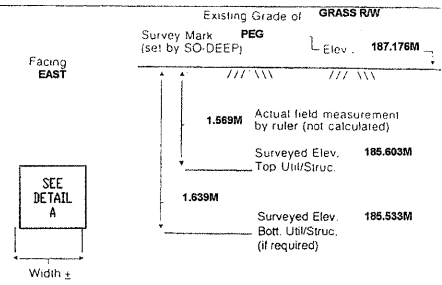
So-Deep Corporate Office
 8397 Euclid Avenue
 Manassas Park, VA 20111
 (703)361-6005

City, County, State: CITY OF YORKVILLE, IL
 Gen. Loc: U.S. 34 @ GAMEFARM DR.
 Recorded Size/Material/Type: UNK. SIZE & TYPE (AT&T) TELE. LINE
 Foreman/Truck#/Form By: J. CLINE / 219 / R. MOONEY

B.M. 1 Elev = 187.429M Description: CHIS "X" SET TOP RIM CB, 5M± RT OF CL STA 189+257±, U.S. 34
 is GIVEN
 B.M. 2 Elev = 187.334M Description: CHIS "X" SET TOP RIM CB, 5M± LT OF CL STA 189+254±, U.S. 34
 is GIVEN

Benchmarks check BY 0.003M
 Elevations are referenced to B.M.#1

Recorded Size/Type of utility WAS FOUND
 There WERE NOT additional utilities in the test hole
 The utility WAS in good condition.
 Paving Thickness and type NO PAVING
 Color of ribbon installed ORANGE
 Soil Type MOIST BROWN
 Field Condition IN GRASS RW
 T.H. tied to PEG
 (1) 10MM (1) 19MM & (1) 38MM TELE. CABLES
 Size/Material/Type
 Portion of pipe exposed for O.D. measurement:
 FULL
 Remarks: NONE



SO-DEEP US, PC The Subsurface Utility Engineering Company
 449 Munroe Falls Road
 Tallmadge, OH 44278
 (330) 794-4455

So-Deep Test Hole Certification Form - Metric

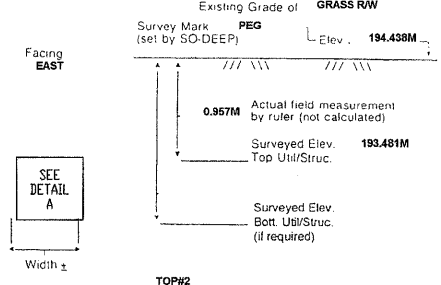
So-Deep Corporate Office
 8397 Euclid Avenue
 Manassas Park, VA 20111
 (703)361-6005

City, County, State: CITY OF YORKVILLE, IL
 Gen. Loc: U.S. 34, 468M± W OF S.R. 47
 Recorded Size/Material/Type: UNK. SIZE & TYPE (AT&T) TELE. LINE
 Foreman/Truck#/Form By: J. CLINE / 219 / R. MOONEY

B.M. 1 Elev = 195.056M Description: CHIS "X" SET TOP RIM STM MH, 8M± LT OF CL STA 189+573±, U.S. 34
 is GIVEN
 B.M. 2 Elev = 194.941M Description: CHIS "X" SET TOP RIM CB, 10M± LT OF CL STA 189+571±, U.S. 34
 is GIVEN

Benchmarks check BY 0.001M
 Elevations are referenced to B.M.#2

Recorded Size/Type of utility WAS FOUND
 There WERE NOT additional utilities in the test hole
 The utility WAS in good condition.
 Paving Thickness and type NO PAVING
 Color of ribbon installed ORANGE
 Soil Type MOIST BROWN
 Field Condition IN GRASS RW
 T.H. tied to PEG
 (2) 38MM TELE. CABLES
 Size/Material/Type
 Portion of pipe exposed for O.D. measurement:
 FULL
 Remarks: NONE



SO-DEEP US, PC The Subsurface Utility Engineering Company
 449 Munroe Falls Road
 Tallmadge, OH 44278
 (330) 794-4455

So-Deep Test Hole Certification Form - Metric

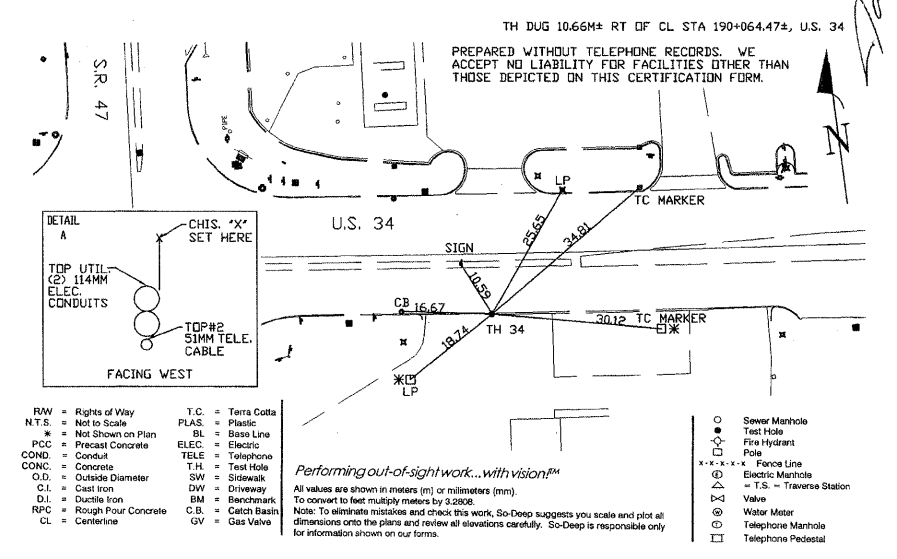
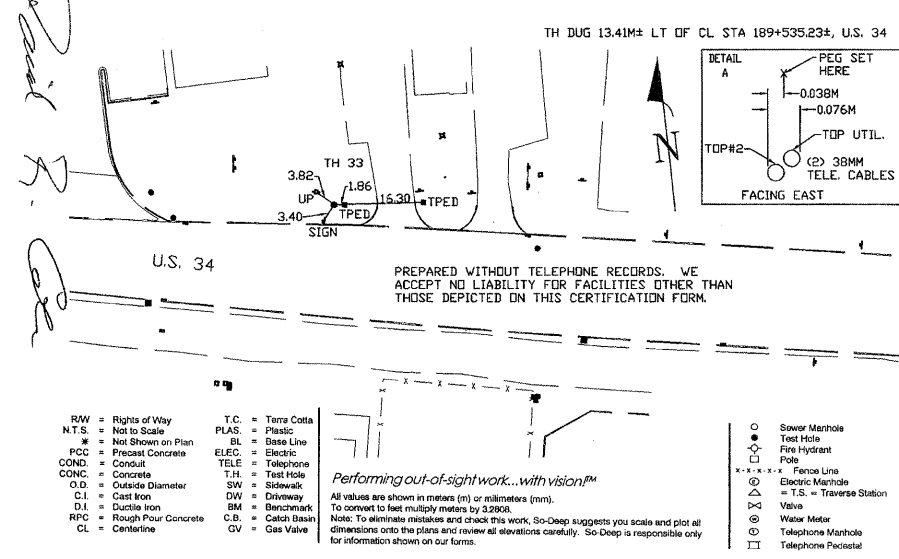
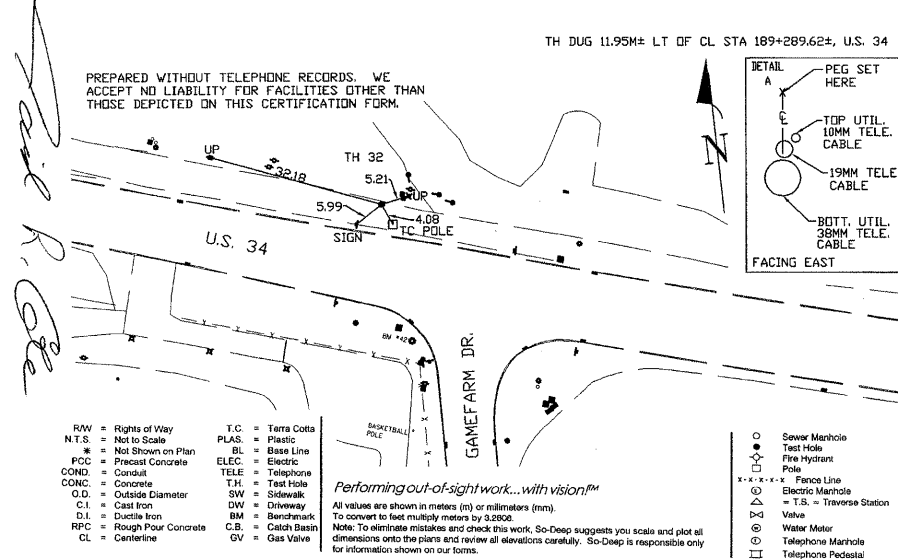
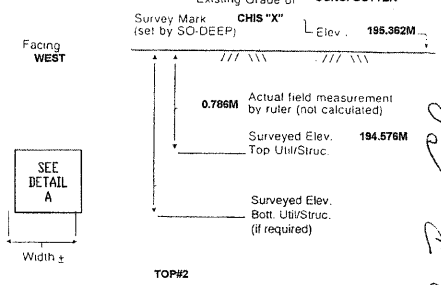
So-Deep Corporate Office
 8397 Euclid Avenue
 Manassas Park, VA 20111
 (703)361-6005

City, County, State: CITY OF YORKVILLE, IL
 Gen. Loc: U.S. 34, 69M± E OF S.R. 47
 Recorded Size/Material/Type: UNK. SIZE & TYPE (AT&T) TELE. LINE
 Foreman/Truck#/Form By: J. CLINE / 219 / R. MOONEY

B.M. 1 Elev = 195.252M Description: CHIS "X" SET TOP RIM STM MH, 10M± LT OF CL STA 190+047±, U.S. 34
 is GIVEN
 B.M. 2 Elev = 195.248M Description: CHIS "X" SET TOP RIM CB, 10M± RT OF CL STA 190+048±, U.S. 34
 is GIVEN

Benchmarks check BY 0.004M
 Elevations are referenced to B.M.#1

Recorded Size/Type of utility WAS FOUND
 There WERE additional utilities in the test hole
 The utility WAS in good condition.
 Paving Thickness and type NO PAVING
 Color of ribbon installed ORANGE
 Soil Type MOIST BROWN
 Field Condition CONC. GUTTER
 T.H. tied to CHIS "X"
 (2) 114MM PLASTIC E-CONDUITS & (1) 51MM T-CABLE
 Size/Material/Type
 Portion of pipe exposed for O.D. measurement:
 FULL
 Remarks: * NOTE: ADDITIONAL CONDUITS MAY BE PRESENT BUT LIE HIDDEN FROM VIEW.



- RW = Rights of Way
- N.T.S. = Not to Scale
- PC = Precast Concrete
- COND. = Conduit
- CONC. = Concrete
- O.D. = Outside Diameter
- C.I. = Cast Iron
- D.I. = Ductile Iron
- RPC = Rough Pour Concrete
- CL = Centerline
- T.C. = Terra Cotta
- PLAS. = Plastic
- BL. = Base Line
- ELEC. = Electric
- TELE. = Telephone
- T.H. = Test Hole
- SW = Sidewalk
- DW = Driveway
- BM = Benchmark
- C.B. = Catch Basin
- GV = Gas Valve
- SMH = Sewer Manhole
- TH = Test Hole
- FLH = Fire Hydrant
- Pole = Pole
- FL = Fence Line
- EMH = Electric Manhole
- T.S. = Traverse Station
- Valve = Valve
- Water Meter = Water Meter
- Telephone Manhole = Telephone Manhole
- Telephone Pedestal = Telephone Pedestal

- RW = Rights of Way
- N.T.S. = Not to Scale
- PC = Precast Concrete
- COND. = Conduit
- CONC. = Concrete
- O.D. = Outside Diameter
- C.I. = Cast Iron
- D.I. = Ductile Iron
- RPC = Rough Pour Concrete
- CL = Centerline
- T.C. = Terra Cotta
- PLAS. = Plastic
- BL. = Base Line
- ELEC. = Electric
- TELE. = Telephone
- T.H. = Test Hole
- SW = Sidewalk
- DW = Driveway
- BM = Benchmark
- C.B. = Catch Basin
- GV = Gas Valve
- SMH = Sewer Manhole
- TH = Test Hole
- FLH = Fire Hydrant
- Pole = Pole
- FL = Fence Line
- EMH = Electric Manhole
- T.S. = Traverse Station
- Valve = Valve
- Water Meter = Water Meter
- Telephone Manhole = Telephone Manhole
- Telephone Pedestal = Telephone Pedestal

- RW = Rights of Way
- N.T.S. = Not to Scale
- PC = Precast Concrete
- COND. = Conduit
- CONC. = Concrete
- O.D. = Outside Diameter
- C.I. = Cast Iron
- D.I. = Ductile Iron
- RPC = Rough Pour Concrete
- CL = Centerline
- T.C. = Terra Cotta
- PLAS. = Plastic
- BL. = Base Line
- ELEC. = Electric
- TELE. = Telephone
- T.H. = Test Hole
- SW = Sidewalk
- DW = Driveway
- BM = Benchmark
- C.B. = Catch Basin
- GV = Gas Valve
- SMH = Sewer Manhole
- TH = Test Hole
- FLH = Fire Hydrant
- Pole = Pole
- FL = Fence Line
- EMH = Electric Manhole
- T.S. = Traverse Station
- Valve = Valve
- Water Meter = Water Meter
- Telephone Manhole = Telephone Manhole
- Telephone Pedestal = Telephone Pedestal

FILE: 391-496-Utility Test Hole sheets.dgn
 PLOTTED: 8/11/2011

REVISIONS	
NAME	DATE

ILLINOIS DEPARTMENT OF TRANSPORTATION

UTILITY TEST HOLE RECORD

DATE _____ DRAWN BY _____ CHECKED BY _____