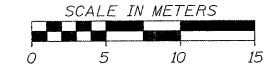
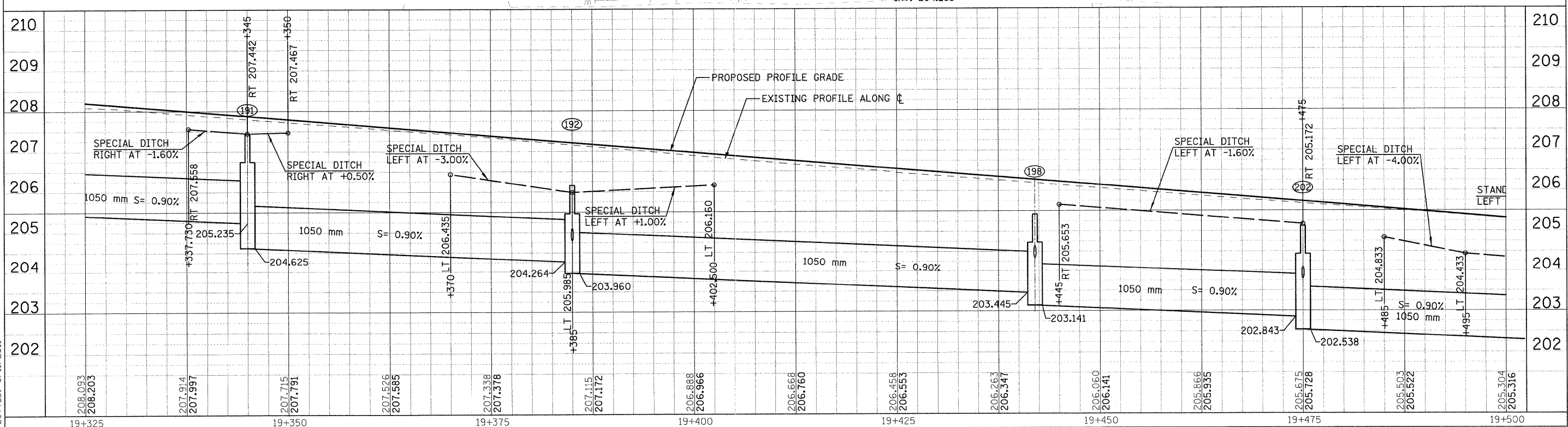
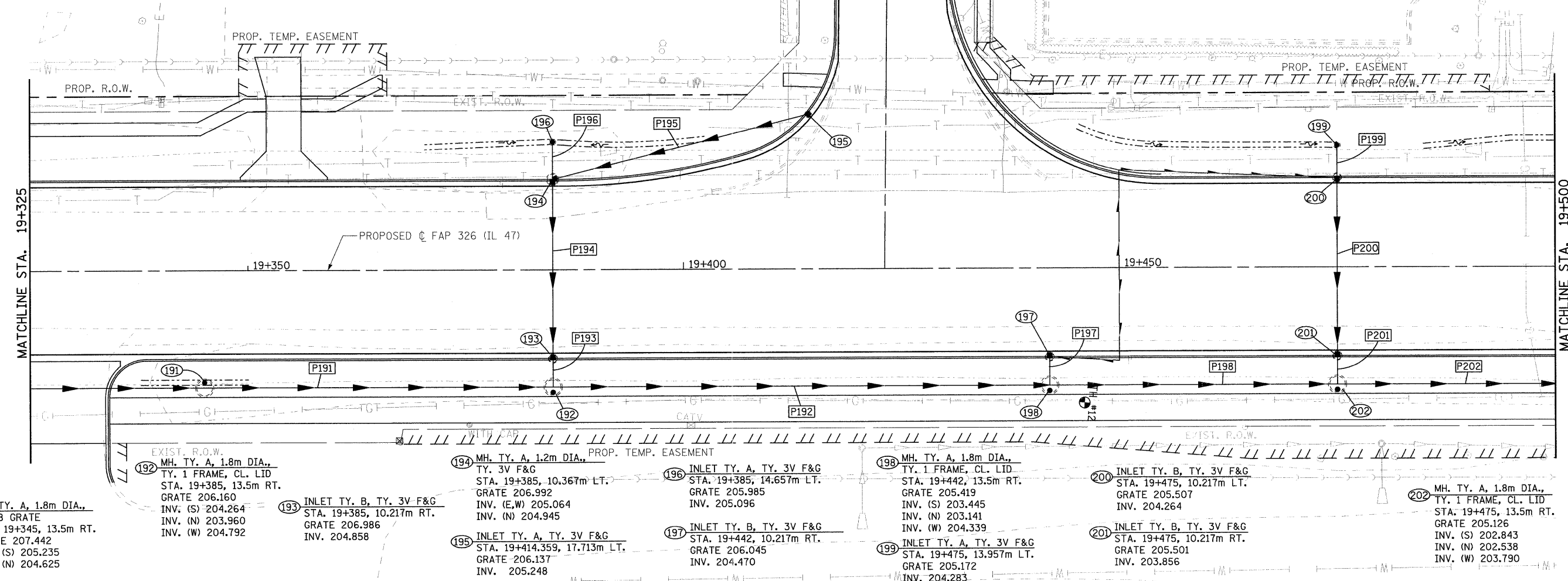


F.A.P. RTE.	SECTION	COUNTY	TOTAL SHEETS	SHEET NO.
326	(5CS,13C,108,109)R	KENDALL	931	412
STA.		TO STA.		
FED. ROAD DIST. NO.		ILLINOIS FED. AID PROJECT		



- P191 STORM SEWER, CL.A, R.G., 1050 38.709m AT 0.90%
- P192 STORM SEWER, CL.A, R.G., 1050 55.709m AT 0.90%
- P193 STORM SEWER, CL.A, R.G., 300 1.982m AT 2.0%
- P194 STORM SEWER, CL.A, R.G., 300 19.600m AT 1.0%
- P195 STORM SEWER, CL.A, R.G., 300 29.462m AT 1.0%
- P196 STORM SEWER, CL.A, R.G., 300 3.488m AT 0.75%
- P197 STORM SEWER, CL.A, R.G., 300 1.982m AT 4.0%
- P198 STORM SEWER, CL.A, R.G., 1050 31.709m AT 0.90%
- P199 STORM SEWER, CL.A, R.G., 300 3.103m AT 0.50%
- P200 STORM SEWER, CL.A, R.G., 300 19.615m AT 2.0%
- P201 STORM SEWER, CL.A, R.G., 300 1.982m AT 2.0%
- P202 STORM SEWER, CL.A, R.G., 1050 38.709m AT 0.90%



FILE: 412stn47_09.dgn PLOTTED: 8/11/2011

Sheet: 9 Angle: 91.9081 Unit: P.L.LAT

HMG JOB NO. 5122