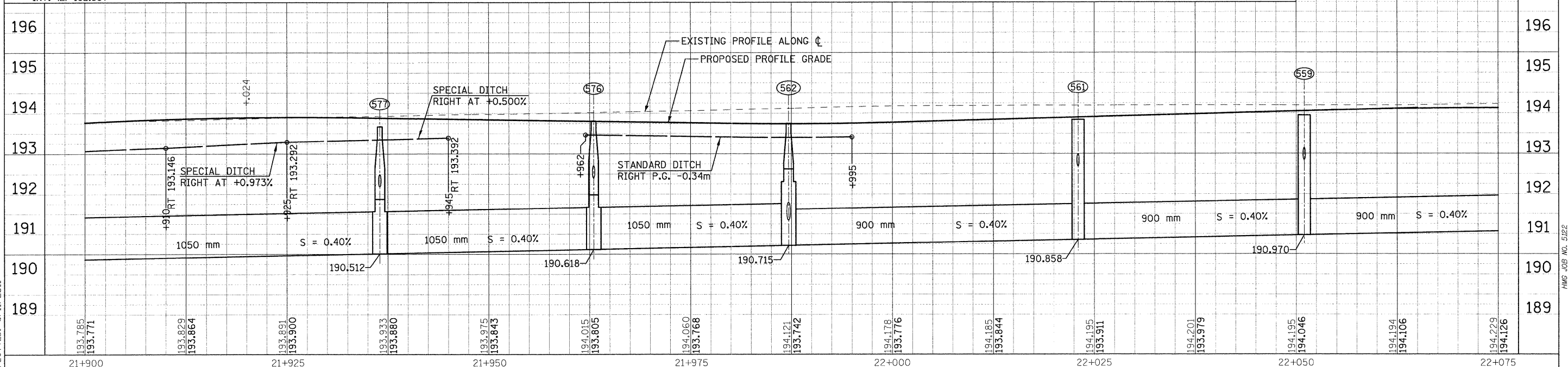
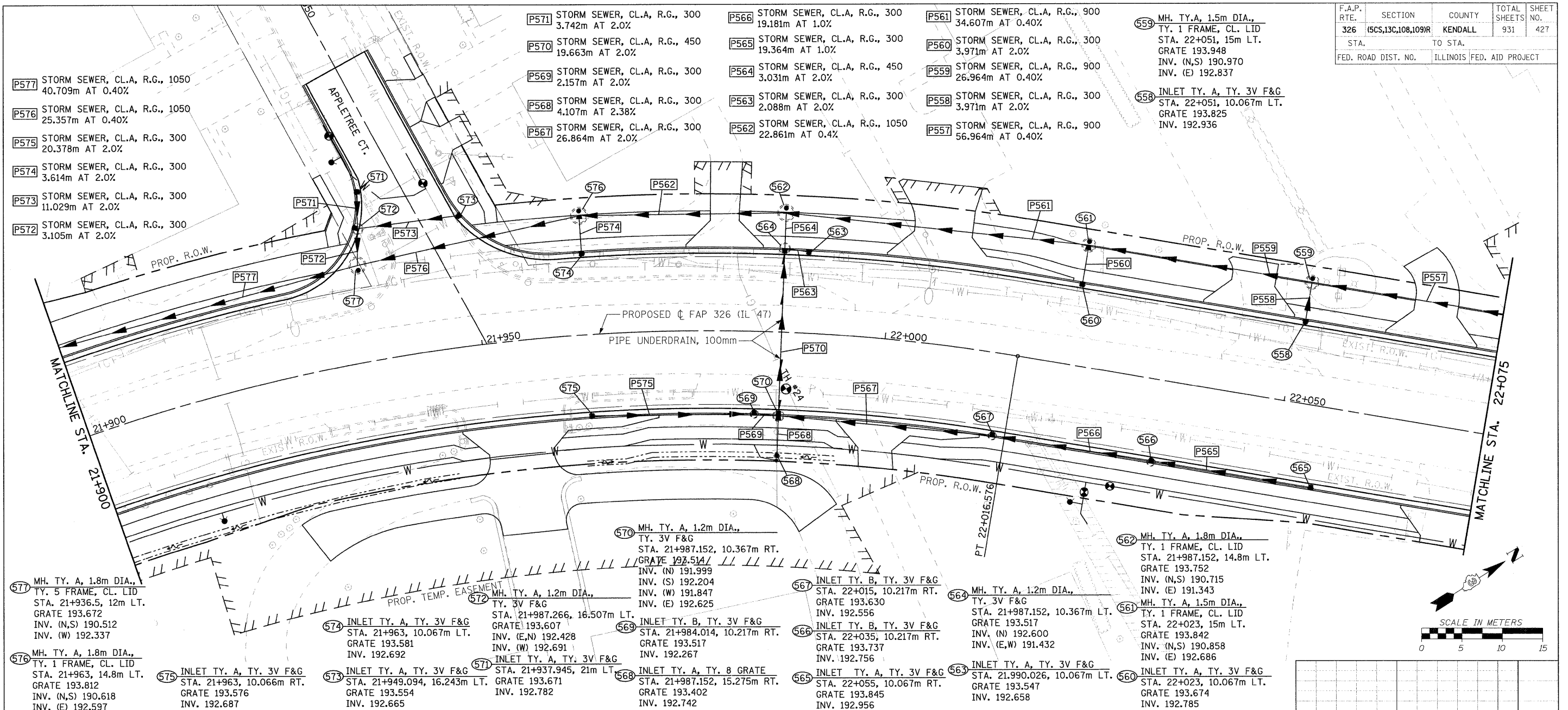


F.A.P. RTE.	SECTION	COUNTY	TOTAL SHEETS	SHEET NO.
326	(5CS,13C,108,109)R	KENDALL	931	427
STA.		TO STA.		
FED. ROAD DIST. NO.		ILLINOIS FED. AID PROJECT		



FILE: 427sm47.24.dgn
 PLOTTED: 8/11/2011

Sheet: 24
 Angle: 57.4230
 Color: P.L.47

HMG JOB NO. 5122