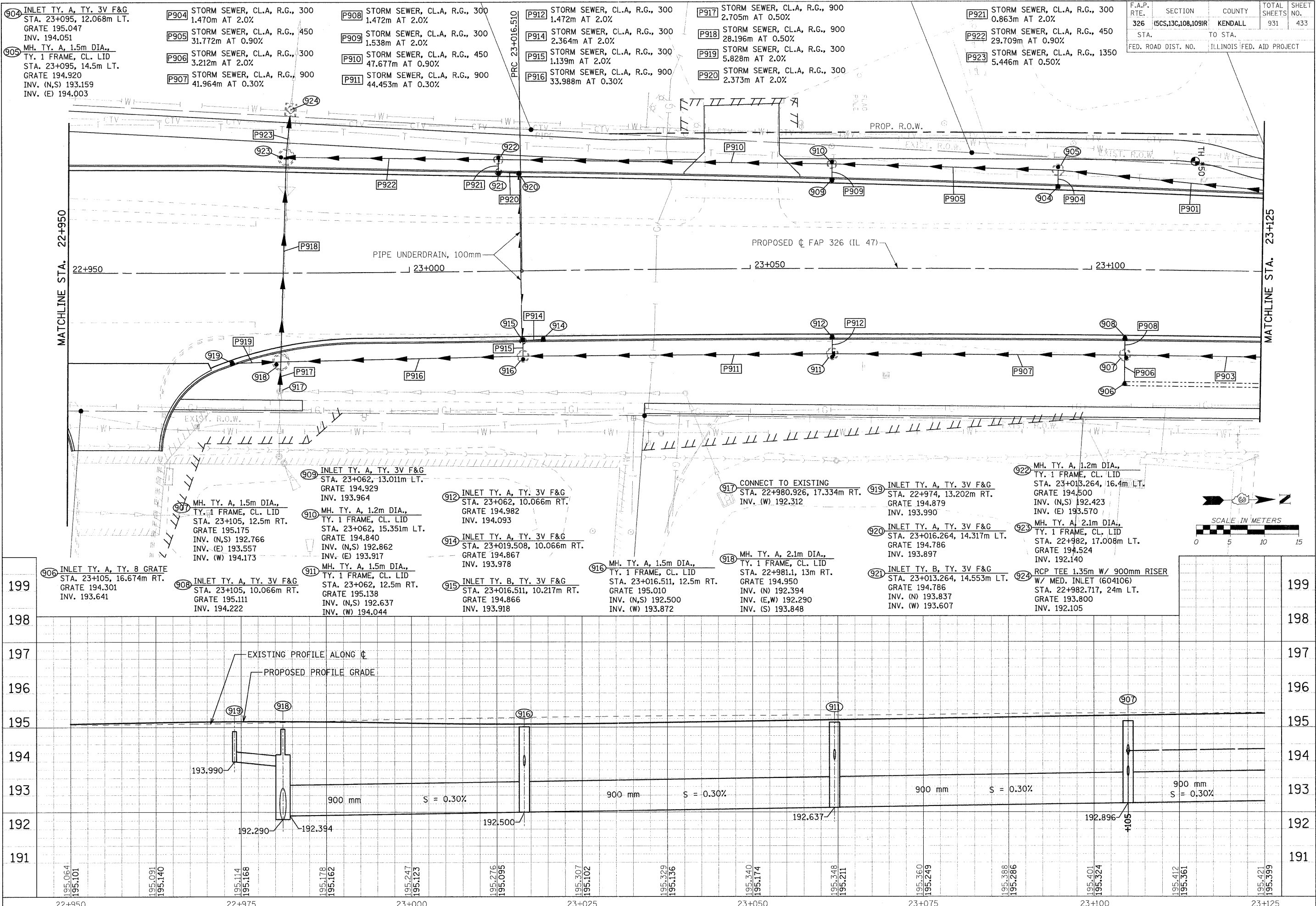


F.A.P. RTE.	SECTION	COUNTY	TOTAL SHEETS	SHEET NO.
326	(6CS,13C,108,109)R	KENDALL	931	433
STA.		TO STA.		
FED. ROAD DIST. NO.		ILLINOIS FED. AID PROJECT		



904 INLET TY. A, TY. 3V F&G
STA. 23+095, 12.068m LT.
GRATE 195.047
INV. 194.051

905 MH. TY. A, 1.5m DIA.,
TY. 1 FRAME, CL. LID
STA. 23+095, 14.5m LT.
GRATE 194.920
INV. (N,S) 193.159
INV. (E) 194.003

P904 STORM SEWER, CL.A, R.G., 300
1.470m AT 2.0%

P905 STORM SEWER, CL.A, R.G., 450
31.772m AT 0.90%

P906 STORM SEWER, CL.A, R.G., 300
3.212m AT 2.0%

P907 STORM SEWER, CL.A, R.G., 900
41.964m AT 0.30%

P908 STORM SEWER, CL.A, R.G., 300
1.472m AT 2.0%

P909 STORM SEWER, CL.A, R.G., 300
1.538m AT 2.0%

P910 STORM SEWER, CL.A, R.G., 450
47.677m AT 0.90%

P911 STORM SEWER, CL.A, R.G., 900
44.453m AT 0.30%

P912 STORM SEWER, CL.A, R.G., 300
1.472m AT 2.0%

P914 STORM SEWER, CL.A, R.G., 300
2.364m AT 2.0%

P915 STORM SEWER, CL.A, R.G., 300
1.139m AT 2.0%

P916 STORM SEWER, CL.A, R.G., 900
33.988m AT 0.30%

P917 STORM SEWER, CL.A, R.G., 900
2.705m AT 0.50%

P918 STORM SEWER, CL.A, R.G., 900
28.196m AT 0.50%

P919 STORM SEWER, CL.A, R.G., 300
5.828m AT 2.0%

P920 STORM SEWER, CL.A, R.G., 300
2.373m AT 2.0%

P921 STORM SEWER, CL.A, R.G., 300
0.863m AT 2.0%

P922 STORM SEWER, CL.A, R.G., 450
29.709m AT 0.90%

P923 STORM SEWER, CL.A, R.G., 1350
5.446m AT 0.50%

906 INLET TY. A, TY. 8 GRATE
STA. 23+105, 16.674m RT.
GRATE 194.301
INV. 193.641

907 MH. TY. A, 1.5m DIA.,
TY. 1 FRAME, CL. LID
STA. 23+105, 12.5m RT.
GRATE 195.175
INV. (N,S) 192.766
INV. (E) 193.557
INV. (W) 194.173

908 INLET TY. A, TY. 3V F&G
STA. 23+105, 10.066m RT.
GRATE 195.111
INV. 194.222

909 INLET TY. A, TY. 3V F&G
STA. 23+062, 13.011m LT.
GRATE 194.929
INV. 193.964

910 MH. TY. A, 1.2m DIA.,
TY. 1 FRAME, CL. LID
STA. 23+062, 15.351m LT.
GRATE 194.840
INV. (N,S) 192.862
INV. (E) 193.917

911 MH. TY. A, 1.5m DIA.,
TY. 1 FRAME, CL. LID
STA. 23+062, 12.5m RT.
GRATE 195.138
INV. (N,S) 192.637
INV. (W) 194.044

912 INLET TY. A, TY. 3V F&G
STA. 23+062, 10.066m RT.
GRATE 194.982
INV. 194.093

914 INLET TY. A, TY. 3V F&G
STA. 23+019.508, 10.066m RT.
GRATE 194.867
INV. 193.978

915 INLET TY. B, TY. 3V F&G
STA. 23+016.511, 10.217m RT.
GRATE 194.866
INV. 193.918

916 MH. TY. A, 1.5m DIA.,
TY. 1 FRAME, CL. LID
STA. 23+016.511, 12.5m RT.
GRATE 194.950
INV. (N,S) 192.500
INV. (W) 193.872

917 CONNECT TO EXISTING
STA. 22+980.926, 17.334m RT.
INV. (W) 192.312

918 MH. TY. A, 2.1m DIA.,
TY. 1 FRAME, CL. LID
STA. 22+981.1, 13m RT.
GRATE 194.950
INV. (N) 192.394
INV. (E,W) 192.290
INV. (S) 193.848

919 INLET TY. A, TY. 3V F&G
STA. 22+974, 13.202m RT.
GRATE 194.879
INV. 193.990

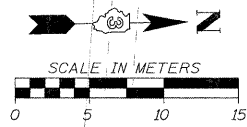
920 INLET TY. A, TY. 3V F&G
STA. 23+016.264, 14.317m LT.
GRATE 194.786
INV. 193.897

921 INLET TY. B, TY. 3V F&G
STA. 23+013.264, 14.553m LT.
GRATE 194.786
INV. (N) 193.837
INV. (W) 193.607

922 MH. TY. A, 1.2m DIA.,
TY. 1 FRAME, CL. LID
STA. 23+013.264, 16.4m LT.
GRATE 194.500
INV. (N,S) 192.423
INV. (E) 193.570

923 MH. TY. A, 2.1m DIA.,
TY. 1 FRAME, CL. LID
STA. 22+982, 17.008m LT.
GRATE 194.524
INV. 192.140

924 RCP TEE 1.35m W/ 900mm RISER
W/ MED. INLET (604106)
STA. 22+982.717, 24m LT.
GRATE 193.800
INV. 192.105



FILE: 433sm47_30.dgn
PLOTTED: 8/11/2011