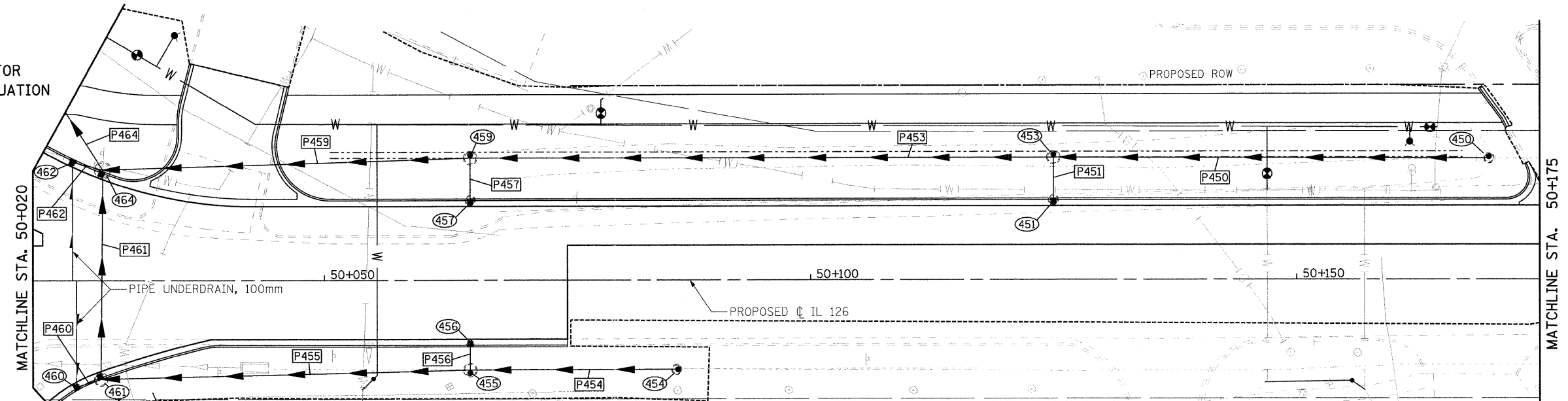


F.A.P. RTE.	SECTION	COUNTY	TOTAL SHEETS	SHEET NO.
326	(5CS,13C,108,109R)	KENDALL	931	438
STA.		TO STA.		
FED. ROAD DIST. NO.		ILLINOIS FED. AID PROJECT		

- P464 STORM SEWER, CL. A, R.G., 600 34.242m AT 0.50%
- P459 STORM SEWER, CL. A, R.G., 450 36.578m AT 1.00%
- P454 STORM SEWER, CL. A, R.G., 300 20.435m AT 2.00%
- P462 STORM SEWER, CL. A, R.G., 300 2.271m AT 2.00%
- P457 STORM SEWER, CL. A, R.G., 300 3.373m AT 4.00%
- P453 STORM SEWER, CL. A, R.G., 450 58.930m AT 1.00%
- P461 STORM SEWER, CL. A, R.G., 300 20.198m AT 2.00%
- P456 STORM SEWER, CL. A, R.G., 300 1.890m AT 2.00%
- P451 STORM SEWER, CL. A, R.G., 300 3.372m AT 4.00%
- P460 STORM SEWER, CL. A, R.G., 300 1.852m AT 2.00%
- P455 STORM SEWER, CL. A, R.G., 300 36.862m AT 2.00%
- P450 STORM SEWER, CL. A, R.G., 450 43.893m AT 2.00%

SEE IL. RTE. 47 FOR STORM SEWER CONTINUATION



464 MH. TY. A, 1.5m DIA., TY. 3V F&G
 STA. 50+027.202, 11.382m LT.
 GRATE 200.695
 INV. (N)
 INV. (NW) 199.748
 INV. (SW) 198.939
 INV. (E) 198.768

462 INLET TY. A, TY. 3V F&G
 STA. 50+024.077, 12.21m LT.
 GRATE 200.702
 INV. 199.813

461 MH. TY. A, 1.2m DIA., TY. 3V F&G
 STA. 50+027, 10.124m RT.
 GRATE 200.662
 INV. (W) 199.710
 INV. (N,E) 199.370

460 INLET TY. A, TY. 3V F&G
 STA. 50+024.471, 10.927m RT.
 GRATE 200.652
 INV. 199.763

459 MH. TY. A, 1.2m DIA., TY. 8 GRATE
 STA. 50+065, 12.574m LT.
 GRATE 200.173
 INV. (S) 199.236
 INV. (E,W) 199.147

457 INLET TY. B, TY. 3V F&G
 STA. 50+065, 8.217m LT.
 GRATE 201.235
 INV. 199.416

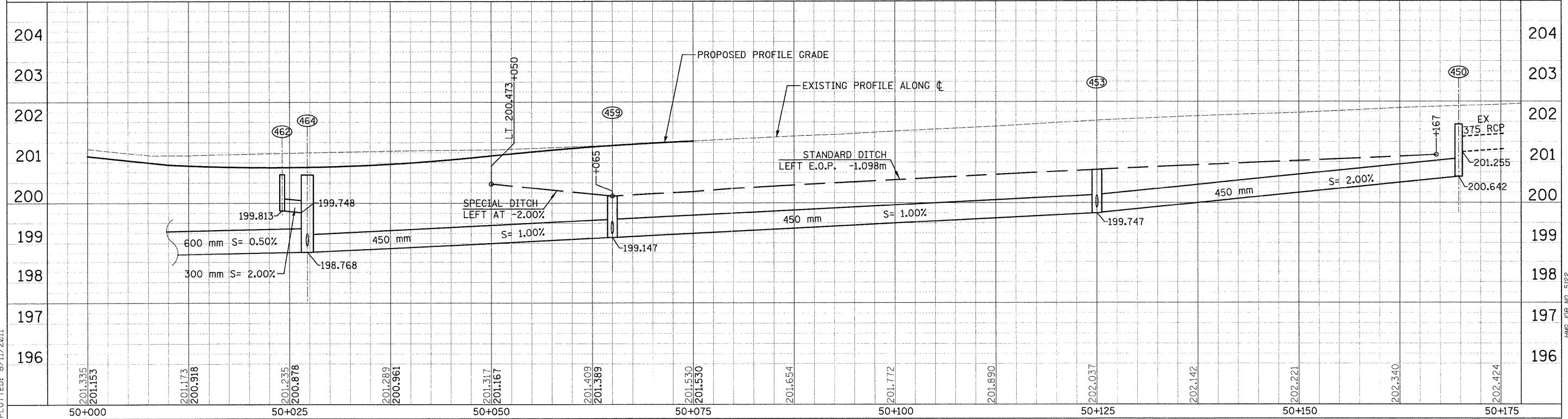
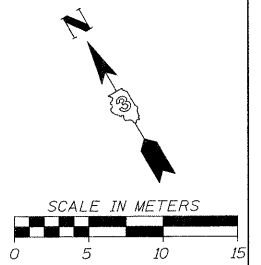
455 MH. TY. A, 1.2m DIA., TY. 1 FRAME, CL. LID
 STA. 50+065, 9.2m RT.
 GRATE 201.440
 INV. (E,W) 200.130
 INV. (N) 200.294

454 INLET TY. A, TY. 8 GRATE
 STA. 50+086.237, 9.152m RT.
 GRATE 201.215
 INV. 200.555

453 MH. TY. A, 1.2m DIA., TY. 8 GRATE
 STA. 50+125, 12.573m LT.
 GRATE 200.819
 INV. (W,E) 199.747
 INV. (S) 199.882

451 INLET TY. B, TY. 3V F&G
 STA. 50+125, 8.217m LT.
 GRATE 201.881
 INV. 200.062

450 INLET TY. B, TY. 1 FRAME & CL. LID
 STA. 50+169.780, 12.460m LT.
 GRATE 201.931
 INV. (E) 201.255
 INV. (W) 200.642



FILE: 438swml126_1.dgn
 PLOTTED: 8/11/2011

HMG JOB NO. 5122