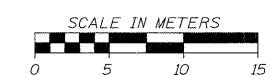
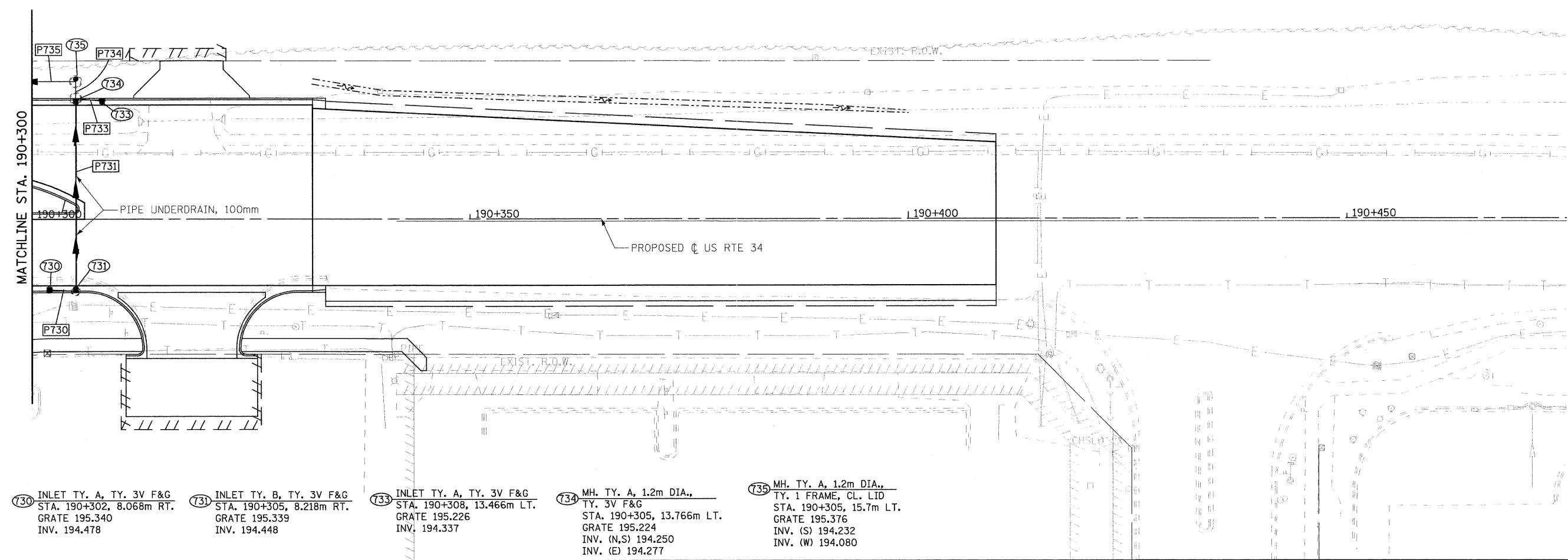


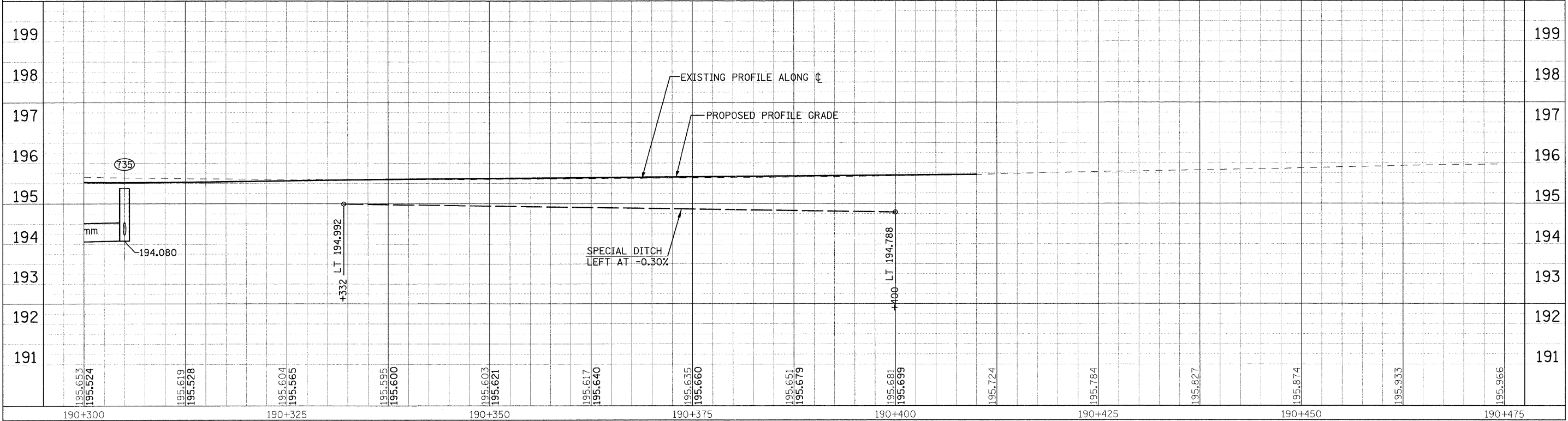
F.A.P. RTE.	SECTION	COUNTY	TOTAL SHEETS	SHEET NO.
326	(SCS,13C,108,109)R	KENDALL	931	446
STA.		TO STA.		
FED. ROAD DIST. NO.		ILLINOIS FED. AID PROJECT		



- P730** STORM SEWER, CL.A, R.G., 300
2.367m AT 1.00%
- P731** STORM SEWER, CL.A, R.G., 300
21.000m AT 0.90%
- P733** STORM SEWER, CL.A, R.G., 300
2.213m AT 2.0%
- P734** STORM SEWER, CL.A, R.G., 300
0.785m AT 0.90%
- P735** STORM SEWER, CL.A, R.G., 450
17.930m AT 0.40%



- (730)** INLET TY. A, TY. 3V F&G
STA. 190+302, 8.068m RT.
GRATE 195.340
INV. 194.478
- (731)** INLET TY. B, TY. 3V F&G
STA. 190+305, 8.218m RT.
GRATE 195.339
INV. 194.448
- (733)** INLET TY. A, TY. 3V F&G
STA. 190+308, 13.466m LT.
GRATE 195.226
INV. 194.337
- (734)** MH. TY. A, 1.2m DIA.,
TY. 3V F&G
STA. 190+305, 13.766m LT.
GRATE 195.224
INV. (N,S) 194.250
INV. (E) 194.277
- (735)** MH. TY. A, 1.2m DIA.,
TY. 1 FRAME, CL. LID
STA. 190+305, 15.7m LT.
GRATE 195.376
INV. (S) 194.232
INV. (W) 194.080



FILE: 446stmUS34_B.dgn
PLOTTED: 8/11/2011

HMG JOB NO. 5122