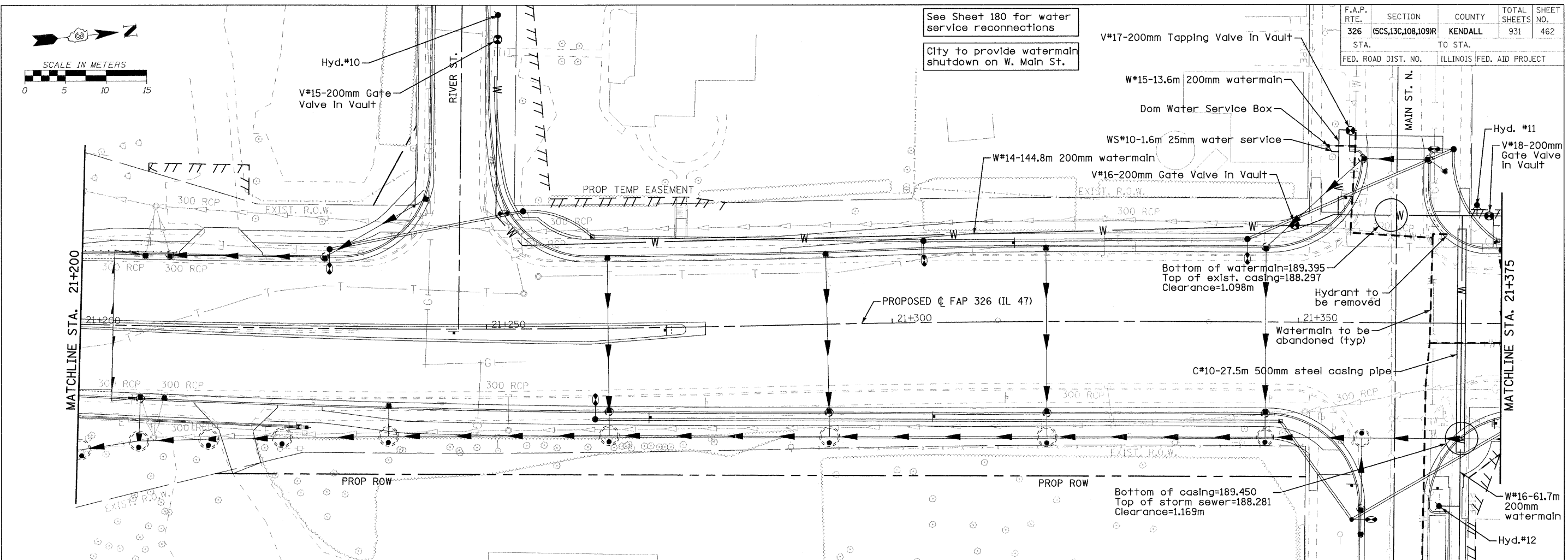
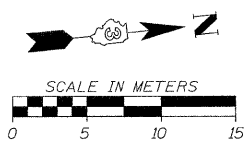
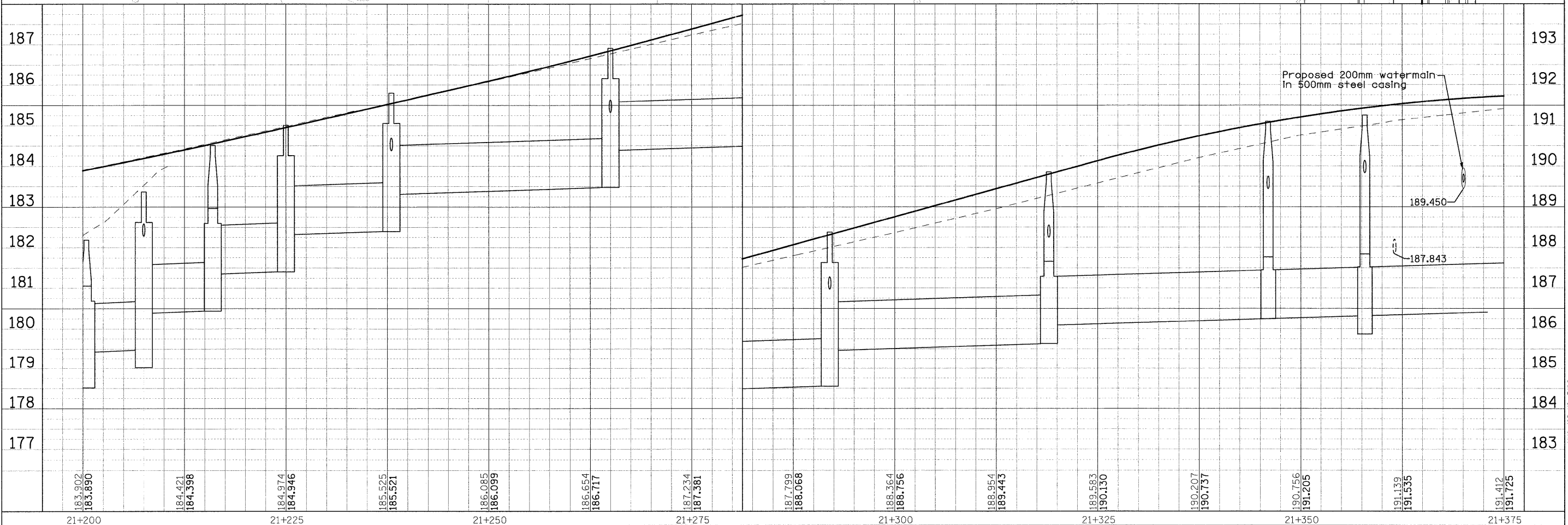


F.A.P. RTE.	SECTION	COUNTY	TOTAL SHEETS	SHEET NO.
326	(5CS,13C,108,109R)	KENDALL	931	462
STA.	TO STA.			
FED. ROAD DIST. NO.	ILLINOIS FED. AID PROJECT			



See Sheet 180 for water service reconnections

City to provide watermain shutdown on W. Main St.



FILE: 462W&Spp-20.dgn
PLOTED: 8/11/2011

Sheet: 20
Angle: 84.3224
Cr: 0m: P: 1.47

HMG JOB NO. 5122