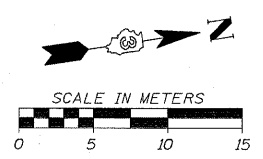
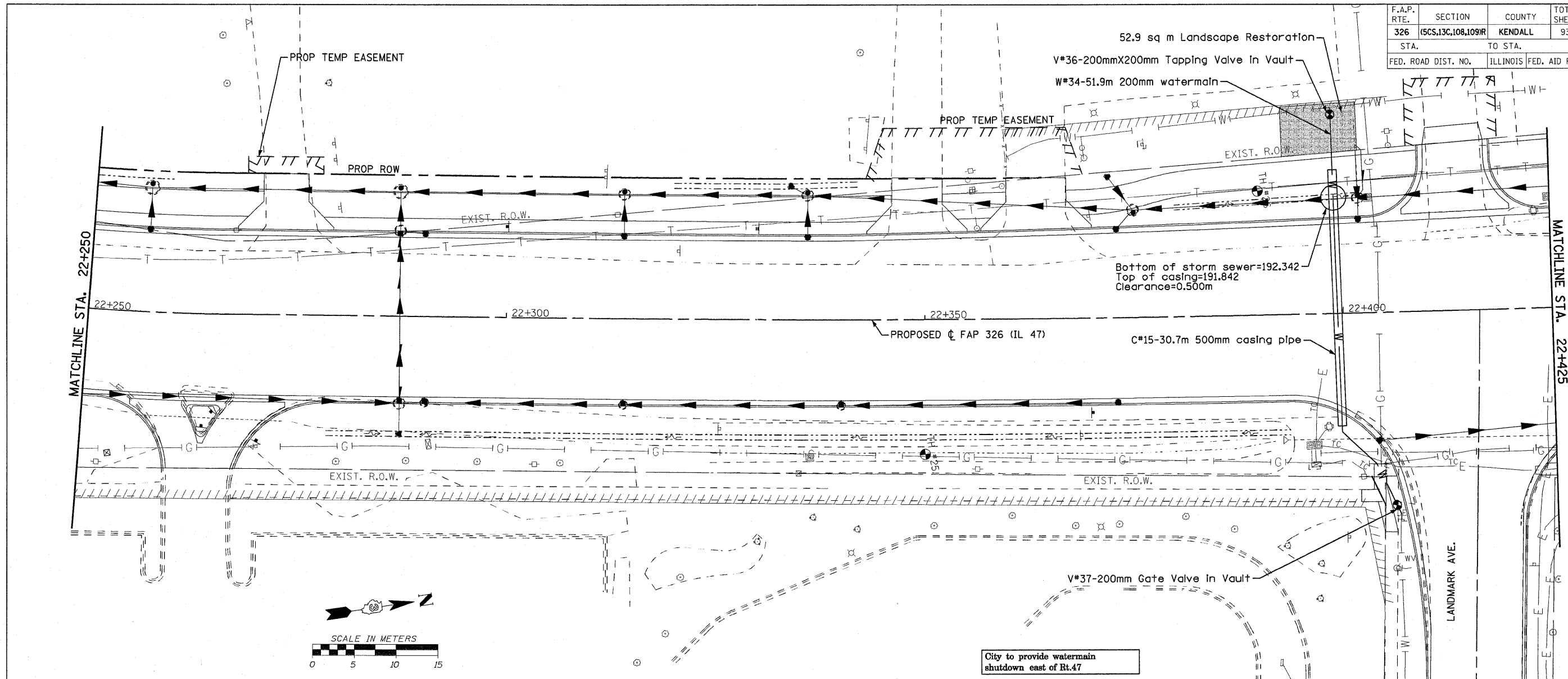
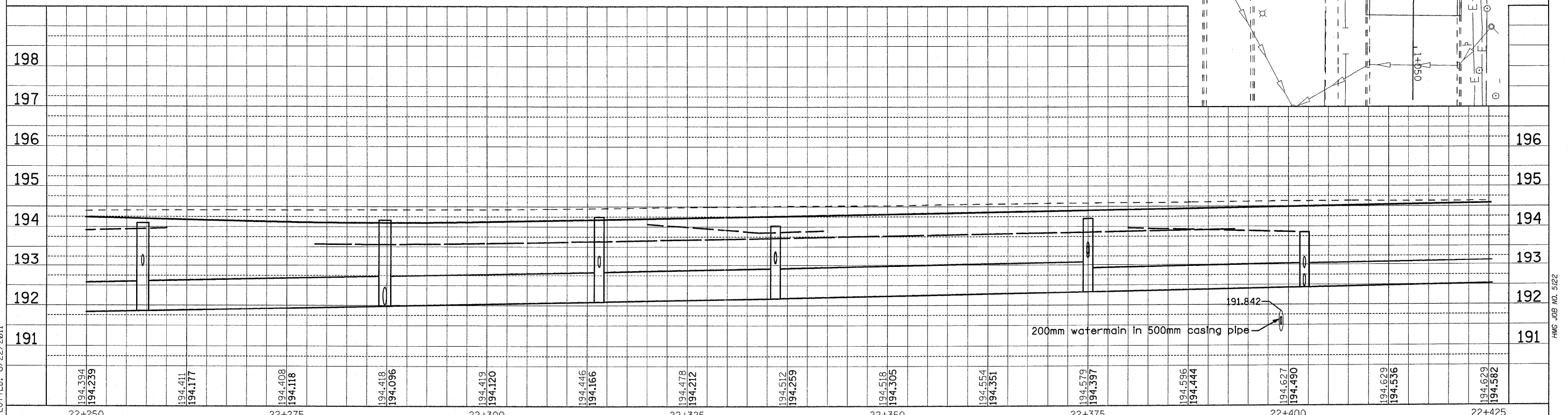


F.A.P. RTE.	SECTION	COUNTY	TOTAL SHEETS	SHEET NO.
326	(SCS,13C,108,109R)	KENDALL	931	468
STA.		TO STA.		
FED. ROAD DIST. NO.		ILLINOIS FED. AID PROJECT		



City to provide watermain shutdown east of Rt.47



Sheet: 26
 Annot: 8/12/09
 Chg: P.L.L.47

FILE: 468W&Spp-26.dgn
 PLOTTED: 8/22/2011

HMG JOB NO. 5122