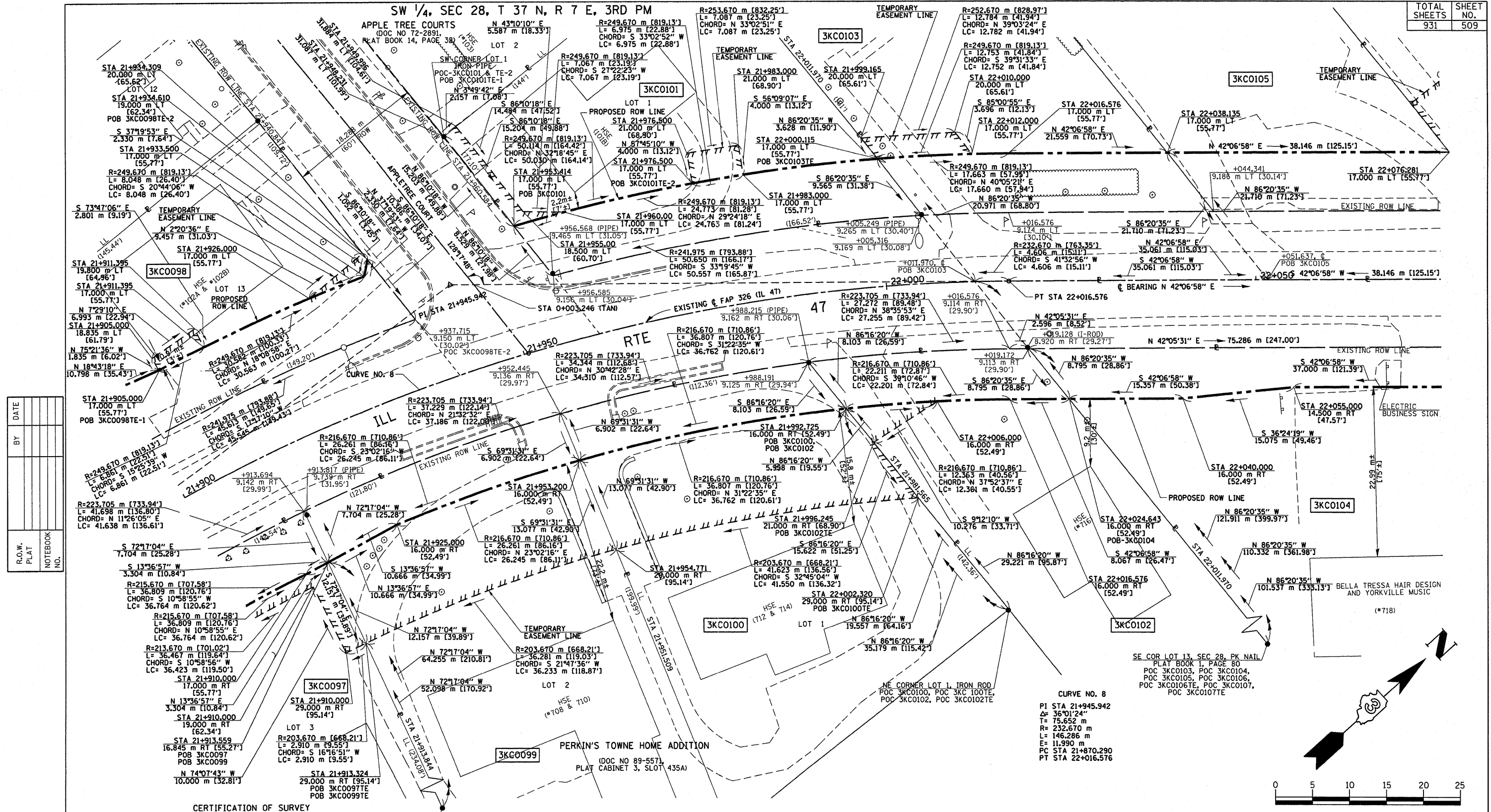


SW 1/4, SEC 28, T 37 N, R 7 E, 3RD PM



BY	DATE
R.O.W. PLAT	NOTEBOOK NO.

CERTIFICATION OF SURVEY

STATE OF ILLINOIS
 COUNTY OF KENDALL

I, TIMOTHY C. QUIGG, HEREBY CERTIFY THAT I AM A PROFESSIONAL LAND SURVEYOR OF THE STATE OF ILLINOIS, THAT THE SURVEY OF PROPOSED F.A.P. 326 (IL. 47) WAS MADE BY ME OR UNDER MY DIRECTION AND THAT THE SURVEY IS TRUE AND COMPLETE AS SHOWN TO THE BEST OF MY KNOWLEDGE AND BELIEF, THAT ALL MONUMENTS AND MARKS ARE OF THE CHARACTER AND OCCUPY THE POSITION SHOWN THEREON, AND ARE SUFFICIENT TO ENABLE THE SURVEY TO BE RETRACED.

DATE: _____ ILLINOIS PROFESSIONAL LAND SURVEYOR NUMBER 3063
 SURVEY BOOK NOS. _____ LICENSE EXPIRES 11/30/08



AREAS SHOWN IN SQUARE METERS (SQUARE FEET)

PARCEL NO.	OWNER	TOTAL HOLDING	TOTAL ROW REQUIRED	AREA IN EXISTING ROADWAY	NET ROW REQUIRED	REMAINDER	TEMPORARY EASEMENT AREA	EASEMENT PURPOSE
3KCO098	KIM A. PETERSON	1,229 m ² [13,229 SF]±	367 m ² [3,950 SF]±	—	367 m ² [3,950 SF]±	862 m ² [9,279 SF]±	TE-1 16 m ² [171 SF]± TE-2 13 m ² [137 SF]±	DRIVE RECONSTRUCTION AND GRADING
3KCO099	JANICE L. VANRIPER	2,365 m ² [25,457 SF]±	259 m ² [2,788 SF]±	—	259 m ² [2,788 SF]±	2,106 m ² [22,669 SF]±	471 m ² [5,070 SF]±	DRIVE RECONSTRUCTION
3KCO100	DENNIS H. AUSTIN, TRUSTEE	2,088 m ² [22,475 SF]±	244 m ² [2,626 SF]±	—	244 m ² [2,626 SF]±	1,844 m ² [19,849 SF]±	510 m ² [5,490 SF]±	DRIVE RECONSTRUCTION
3KCO101	THE OLD SECOND NATIONAL BANK, TRUST NO. 8801	1,538 m ² [16,555 SF]±	395 m ² [4,252 SF]±	—	395 m ² [4,252 SF]±	1,143 m ² [12,303 SF]±	TE-1 37 m ² [401 SF]± TE-2 28 m ² [303 SF]±	DRIVE RECONSTRUCTION AND GRADING
3KCO102	HOLMAN F. HORTON, JR., et ux	2,669 m ² [28,729 SF]±	207 m ² [2,228 SF]±	—	207 m ² [2,228 SF]±	2,462 m ² [26,501 SF]±	31 m ² [334 SF]±	DRIVE RECONSTRUCTION
3KCO103	BRETT A. BEHRENS, et ux	2,267 m ² [24,402 SF]±	671 m ² [7,223 SF]±	363 m ² [3,907 SF]±	308 m ² [3,316 SF]±	1,596 m ² [17,179 SF]±	38 m ² [412 SF]±	DRIVE RECONSTRUCTION
3KCO104	CASTLE BANK N.A. TRUSTEE	3,650 m ² [39,288 SF]±	433 m ² [4,661 SF]±	—	433 m ² [4,661 SF]±	3,217 m ² [34,627 SF]±	—	—
3KCO105	PETER A. LODESTRO, et ux	2,879 m ² [30,989 SF]±	649 m ² [6,986 SF]±	351 m ² [3,778 SF]±	298 m ² [3,208 SF]±	2,230 m ² [24,003 SF]±	—	—

NOTE: BEARINGS ARE BASED ON ILLINOIS STATE PLANE COORDINATE SYSTEM NAD 1983 - EAST ZONE

ILLINOIS DEPT. OF TRANSPORTATION
 RIGHT OF WAY PLAT

ROUTE FAP 326 (IL 47)
 SECTION (5CS, 13C, 108, 109R)
 COUNTY : KENDALL
 JOB# R-93-014-94 PROJECT#
 SEC 28 T 37 N, R 7 E OF 3RD P.M.
 STA 21+900.000 TO STA 22+075.000
 SCALE: 1:250 SHEET NO. 23 OF 36

