

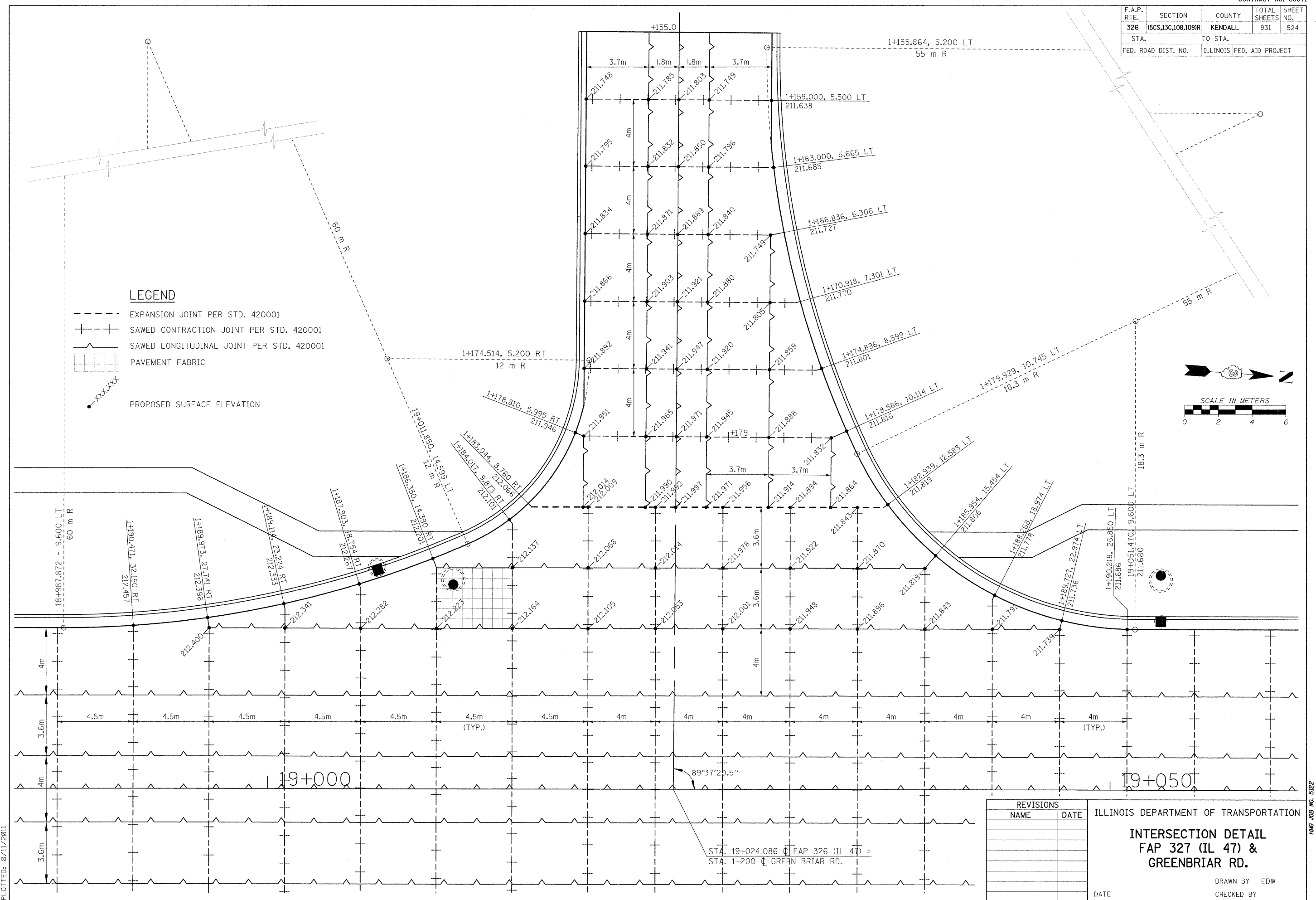
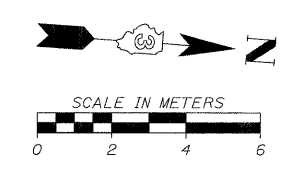
\* 5m 2x5 NOT USED \*

CONTRACT NO. 66671

F.A.P. RTE.	SECTION	COUNTY	TOTAL SHEETS	SHEET NO.
326	(SCS,13C,108,109)R	KENDALL	931	524
STA.	TO STA.			
FED. ROAD DIST. NO.	ILLINOIS	FED. AID PROJECT		

**LEGEND**

- - - - - EXPANSION JOINT PER STD. 420001
- + + + + + SAWED CONTRACTION JOINT PER STD. 420001
- ~ ~ ~ ~ ~ SAWED LONGITUDINAL JOINT PER STD. 420001
- [Grid Pattern] PAVEMENT FABRIC
- PROPOSED SURFACE ELEVATION



REVISIONS	
NAME	DATE

ILLINOIS DEPARTMENT OF TRANSPORTATION

**INTERSECTION DETAIL**  
**FAP 327 (IL 47) &**  
**GREENBRIAR RD.**

DRAWN BY EDW  
 CHECKED BY  
 DATE

FILE: 5241D\_GB-r-d.dgn  
 PLOTTED: 8/11/2011

HMG JOB NO. 5122