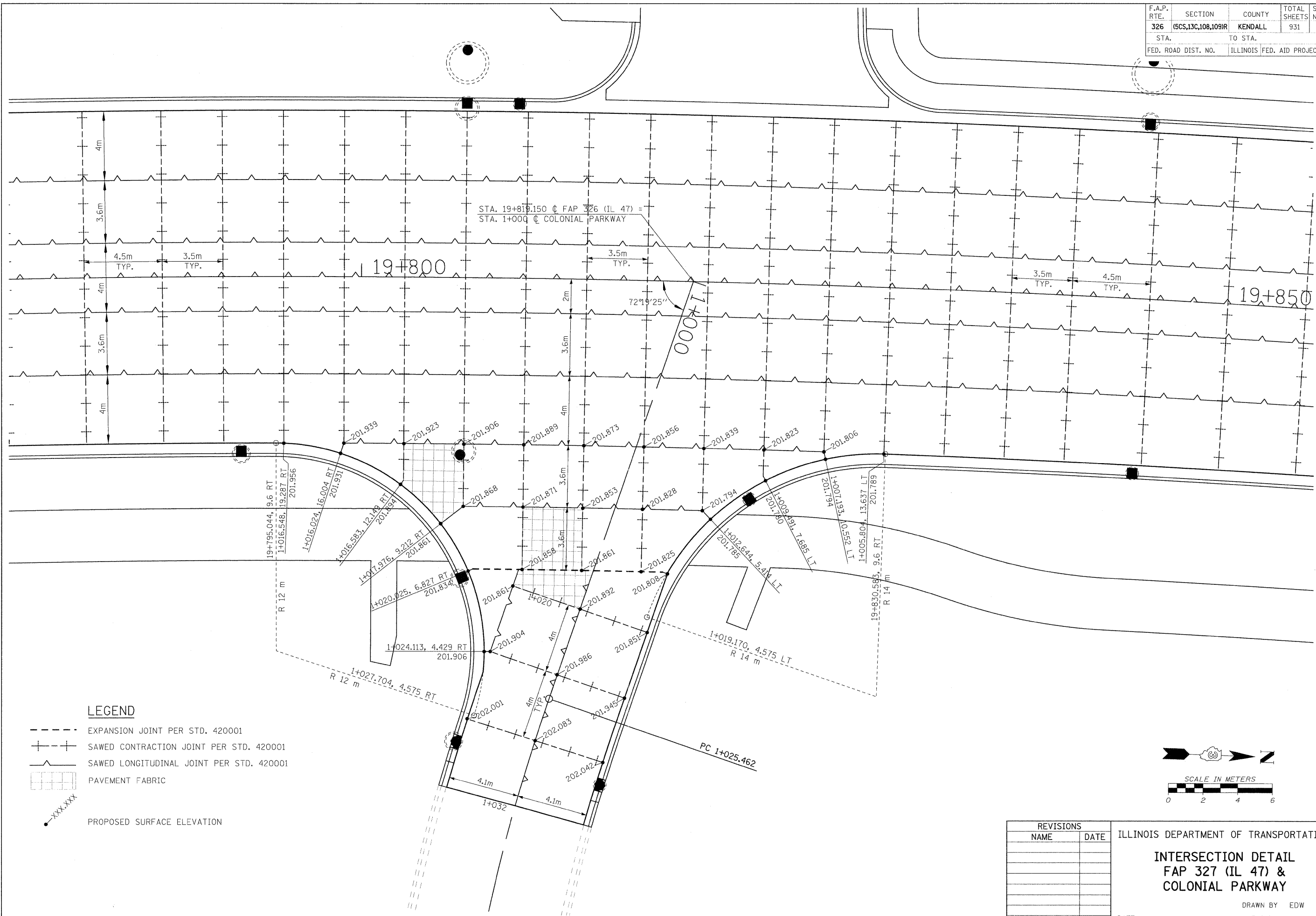
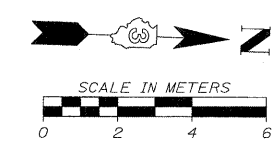


| | | | | |
|---------------------|--------------------|---------------------------|--------------|-----------|
| F.A.P. RTE. | SECTION | COUNTY | TOTAL SHEETS | SHEET NO. |
| 326 | (5CS,13C,108,109)R | KENDALL | 931 | 527 |
| STA. | | TO STA. | | |
| FED. ROAD DIST. NO. | | ILLINOIS FED. AID PROJECT | | |



LEGEND

- EXPANSION JOINT PER STD. 420001
- +---+ SAWED CONTRACTION JOINT PER STD. 420001
- SAWED LONGITUDINAL JOINT PER STD. 420001
- [Grid Pattern] PAVEMENT FABRIC
- XXX--- PROPOSED SURFACE ELEVATION



| REVISIONS | | ILLINOIS DEPARTMENT OF TRANSPORTATION |
|-----------|------|---|
| NAME | DATE | |
| | | <p align="center">INTERSECTION DETAIL FAP 327 (IL 47) & COLONIAL PARKWAY</p> <p align="right">DRAWN BY EDW CHECKED BY</p> |
| | | |
| | | |
| | | |
| | | |
| | | |
| DATE | | |

FILE: 527ID_Colnpx.dgn
 PLOTTED: 8/11/2011

HMG JOB NO. 5122