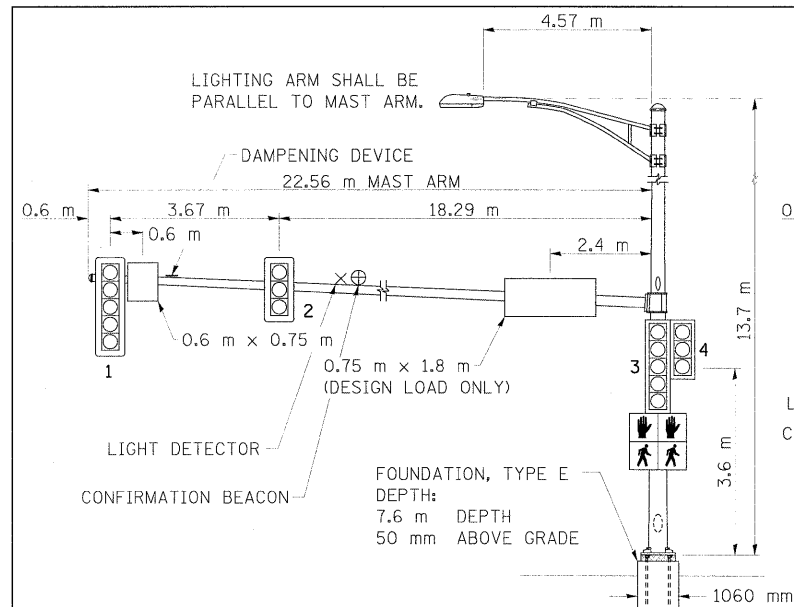
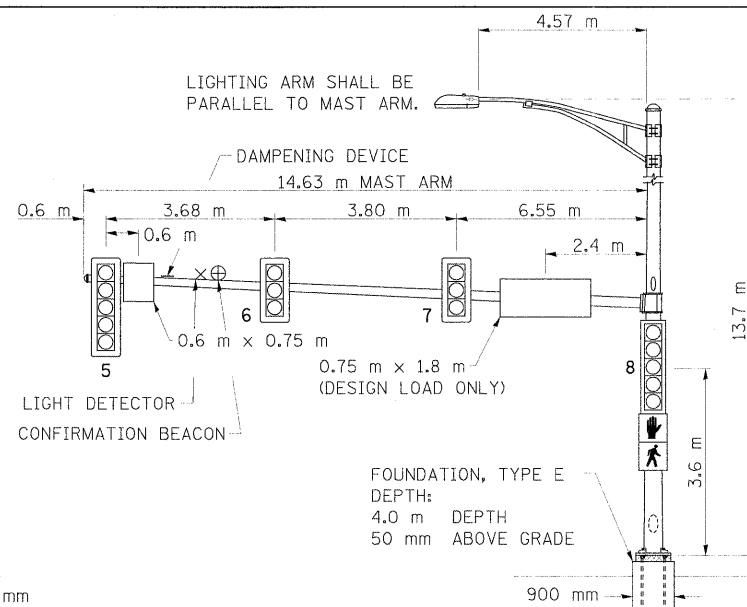


F.A.P. RTE.	SECTION	COUNTY	TOTAL SHEETS	SHEET NO.
326	*	KENDALL	931	585
STA. N/A		TO STA. N/A		
FED. ROAD DIST. NO. 5 ILLINOIS FED. AID PROJECT				

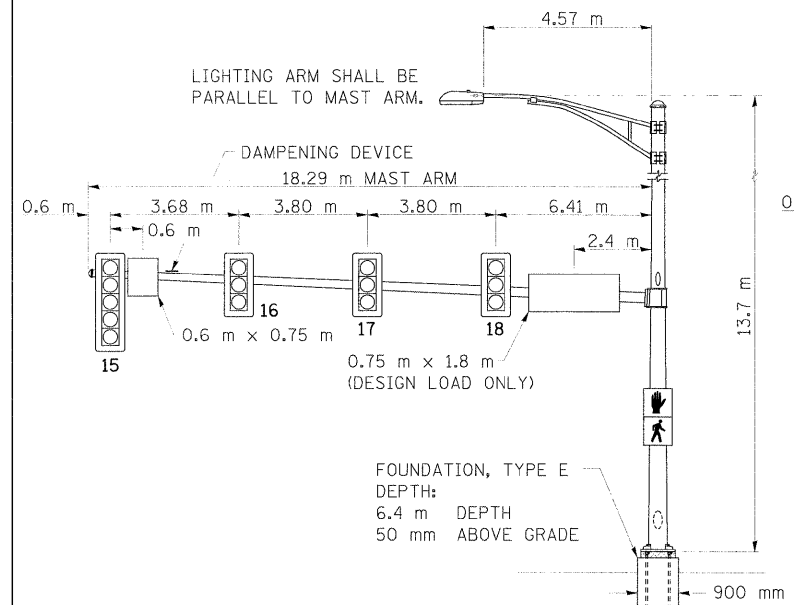
*5CS, 13C, 108, 109IR



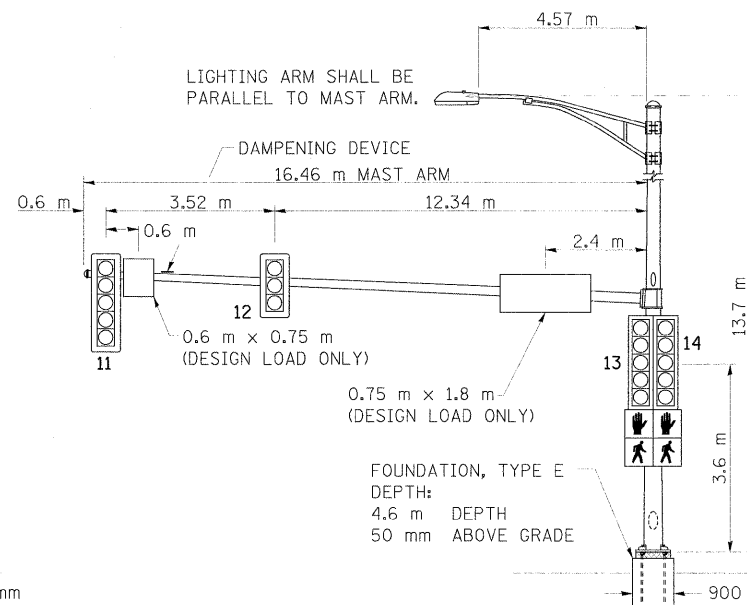
MAST ARM NORTHWEST QUADRANT (A)



MAST ARM NORTHEAST QUADRANT (B)



MAST ARM SOUTHWEST QUADRANT (C)



MAST ARM SOUTHEAST QUADRANT (D)

ELECTRICAL LOAD CHART

IL ROUTE 47

INDICATION	NUMBER	WATTAGE EACH	BURN TIME (%)
RED	12	12	60
YELLOW	12	32	5
GREEN	12	12	35
YELLOW ARROW	6	12	5
GREEN ARROW	6	11	10
GREEN ARROW	4	7	5
GREEN ARROW	4	7	95

FOUNTAINVIEW DRIVE

RED	8	12	70
YELLOW	8	32	5
GREEN	8	12	25
YELLOW ARROW	4	12	5
GREEN ARROW	4	11	10
GREEN ARROW	4	7	5
GREEN ARROW	4	7	95

TRAFFIC SIGNAL CABINET

ITEM	NUMBER	WATTAGE EACH	BURN TIME (%)
CONTROLLER	1	6	100
INDUCTIVE LOOP DETECTOR UNINTERRUPTABLE POWER SUPPLY	10	1.5	100
LIGHT DETECTOR AMPLIFIER	1	50	100
LIGHT DETECTOR AMPLIFIER	1	1.5	100

HIGHWAY LIGHTING

ITEM	NUMBER	WATTAGE EACH	BURN TIME (%)
CONTROLLER	1	6	100
LUMINAIRE	4	250	45

NOTES:

- WORD "GRADE" IS TO BE INTERPRETED AS TOP OF CURB. TOP OF FOUNDATION SHALL NOT BE EXPOSED MORE THAN 100 mm ABOVE THE SURROUNDING GROUND.
- ALL SIGNAL HEADS SHALL HAVE BACKPLATES.
- FOUNDATION SHOULD BE 50mm ABOVE GRADE OR 0.35mm ABOVE CENTERLINE OF ROADWAY, WHICHEVER IS HIGHER.

DETECTOR LOOP INDUCTANCE CHART

DETECTOR LOOP SYSTEM	TURNS PER LOOP	INDUCTANCE READING (MICROHENRIES)	FREQUENCY (HERTZ)	J PIN STATUS
A	4	577.60	25,378	OFF
B	6	661.00	23,738	ON
C	4	837.60	21,074	ON
D	4	598.57	24,946	ON
E	4	817.40	21,333	ON
F	4	522.90	26,672	OFF
G	6	605.5	24,803	ON
H	4	782.9	21,798	ON
I	4	683.35	23,347	ON
J	4	812.40	21,399	ON

NOTIFY THE TRAFFIC SIGNAL SECTION AT (815) 434-8506 72 HOURS IN ADVANCE TO REDESIGN THE DETECTOR LOOPS, IF POSSIBLE, TO AVOID CONSTRUCTION JOINTS.

PEDESTRIAN CROSSING SIGN DETAIL

COUNT-DOWN PEDESTRIAN SIGN R10-3e TO BE USED.

8 REQUIRED.

DIMENSIONS: 230mm x 380mm (TYP.)
LEGEND AND BORDER: NON-REFLECTORIZED BLACK
BACKGROUND: RETROREFLECTIVE WHITE
NUMBERS AND SYMBOLS: RETROREFLECTIVE ORANGE

ONE SIGN SHALL BE PROVIDED FOR EACH PUSH-BUTTON.
ORIENTATION OF DIRECTIONAL ARROWS TO BE DETERMINED BY PUSH-BUTTON LOCATION.

ALL MOUNTING HARDWARE SHALL BE STAINLESS STEEL CONSTRUCTION. ALL MOUNTING BOLTS SHALL BE HEX HEAD.

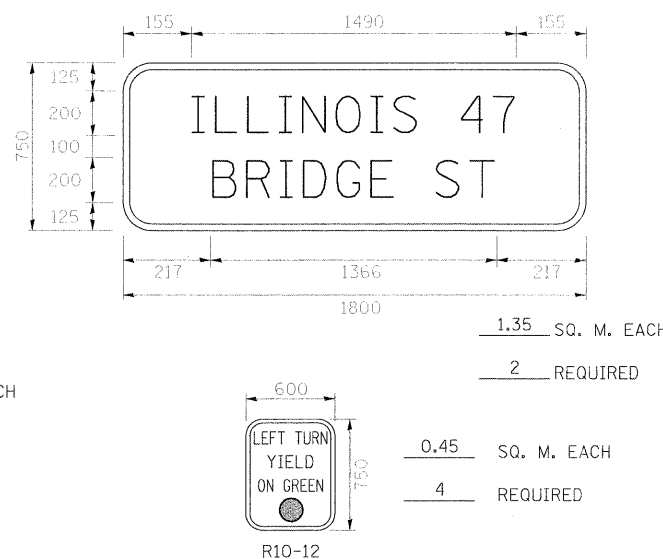
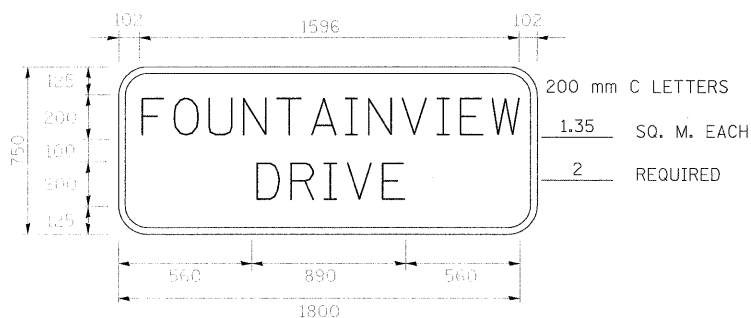
MATERIALS AND INSTALLATION OF THIS SIGN SHALL BE INCLUDED IN THE COST OF PEDESTRIAN PUSH-BUTTON.

STREET SIGN DETAIL

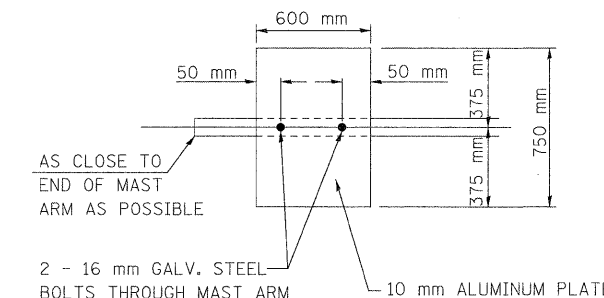
THESE STREET NAME SIGNS SHALL BE PLACED ON THE MAST ARMS PARALLEL TO THE RESPECTIVE ROUTE AS DIRECTED BY THE ENGINEER.

STREET NAME SIGNS:

- TYPE ZZ SHEETING REQUIRED
- WHITE/GREEN BACKGROUND
- STYLE (d)-15 mm BORDER
- 200 mm SERIES D LETTERS UNLESS OTHERWISE SHOWN
- ALL DIMENSIONS ARE IN MILLIMETERS UNLESS OTHERWISE SHOWN



NOTE: DAMPENING DEVICE SHALL CONSIST OF A 600mm X 750mm TYPE 1, UNPAINTED ALUMINUM SIGN STOCK MOUNTED HORIZONTALLY ON TOP OF MAST ARM WITH THE 750mm LENGTH PERPENDICULAR TO THE ARM. COST OF THE DAMPENING DEVICE IS INCLUDED IN THE MAST ARM PAY ITEM.



DAMPENING PLATE DETAIL

(TOP VIEW) INCIDENTAL TO MAST ARM QUANTITY

REVISIONS	
NAME	DATE

ILLINOIS DEPARTMENT OF TRANSPORTATION
MAST ARM LOADING DIAGRAM
ELECTRICAL LOAD CHART
SIGN DETAILS
IL. 47 (BRIDGE ST.)/
FOUNTAINVIEW DRIVE

SCALE: NONE DRAWN BY: SL
DATE: MARCH, 2010 CHECKED BY: KC