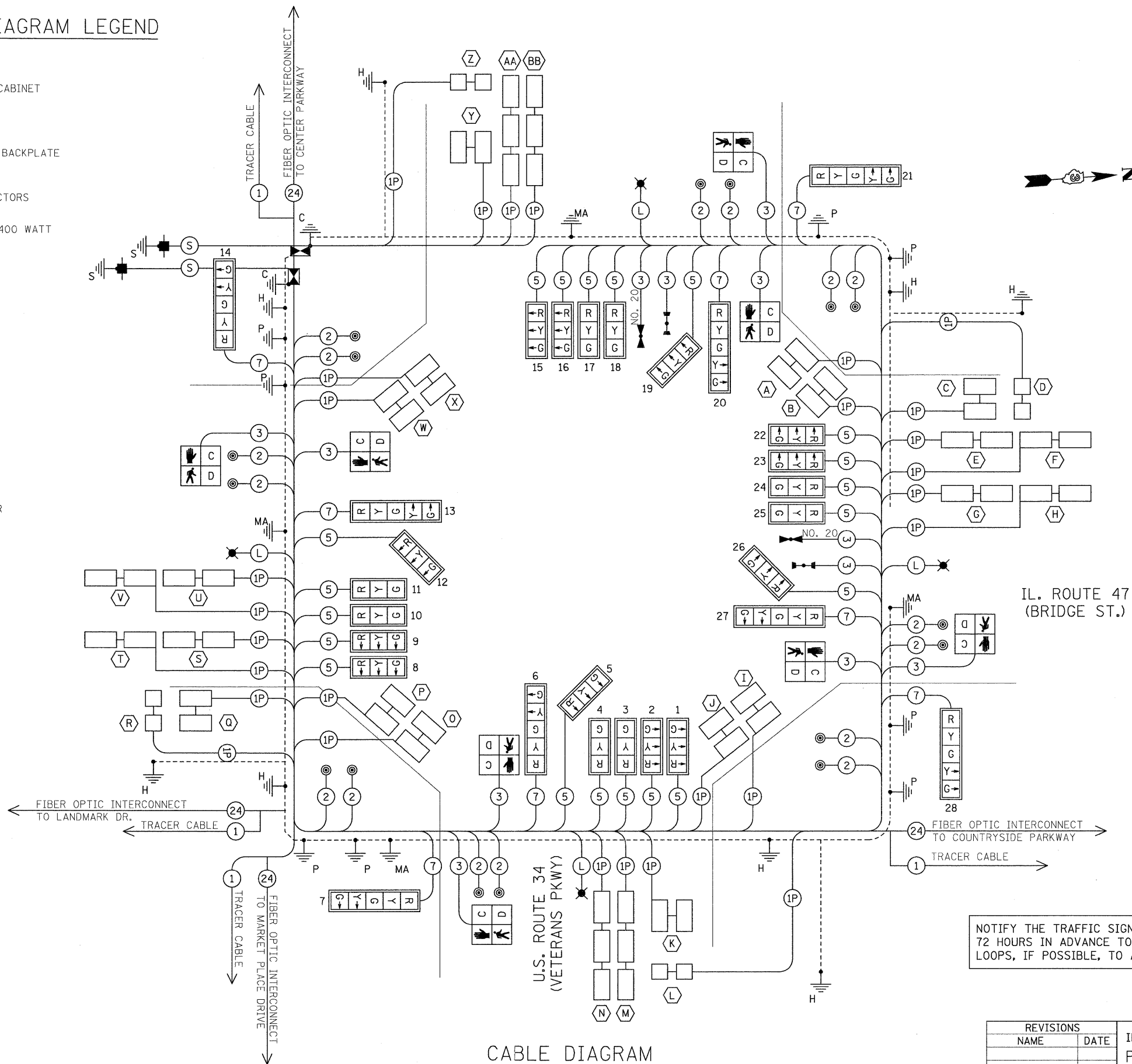


F.A.P. RTE.	SECTION	COUNTY	TOTAL SHEETS	SHEET NO.
326	*	KENDALL	931	615
STA. N/A		TO STA. N/A		
FED. ROAD DIST. NO. 5		ILLINOIS FED. AID PROJECT		

* (5CS, 13C, 10B, 109)R

PROPOSED CABLE DIAGRAM LEGEND

- CONTROLLER AND CABINET
- LIGHTING CONTROLLER AND CABINET
- SERVICE INSTALLATION
- TRAFFIC SIGNAL HEAD WITH BACKPLATE
- DENOTES NUMBER OF CONDUCTORS
- LUMINAIRE, SODIUM VAPOR, 400 WATT
- PEDESTRIAN SIGNAL HEAD WITH COUNTDOWN DISPLAY
- PEDESTRIAN PUSH BUTTON
- DETECTOR LOOP
- DETECTOR LOOP SYSTEM
- GROUND ROD AT HANDHOLE OR DOUBLE HANDHOLE
- GROUND ROD AT POST (P) OR MAST ARM POLE (MA)
- GROUND ROD AT ELECTRIC SERVICE INSTALLATION
- GROUND ROD AT CONTROLLER
- LIGHT DETECTOR
- CONFIRMATION BEACON
- SERVICE CABLE**
ELECTRIC CABLE IN CONDUIT, SERVICE, NO.6 2C
- LIGHTING CABLE**
600V (XLP-TYPE USE) 3 - 1/C NO.10



NOTIFY THE TRAFFIC SIGNAL SECTION AT (815) 434-8506 72 HOURS IN ADVANCE TO REDESIGN THE DETECTOR LOOPS, IF POSSIBLE, TO AVOID CONSTRUCTION JOINTS.

CABLE DIAGRAM

CONTROLLER SPECIFIED: ECONOLITE ASC-3/2100 TS-2 TYPE 2
 MASTER CONTROLLER SPECIFIED: ECONOLITE ASC 2M-1000
 PEDESTRIAN PUSH-BUTTONS: 4 EVR ROUND MODEL

REVISIONS	
NAME	DATE

ILLINOIS DEPARTMENT OF TRANSPORTATION
 PHASE DIAGRAM, CABLE DIAGRAM
 SCHEDULE OF QUANTITIES
 IL. 47 (BRIDGE ST.)/
 U.S. 34 (VETERANS PKWY)
 SCALE: NONE
 DATE: MARCH, 2010
 DRAWN BY: SL
 CHECKED BY: KC

PLOT DATE = 8/11/2011
 FILE NAME = R:\GIS2\design\615-6161134_cable.dgn
 PLOT SCALE = 1"=100'
 USER NAME = JUSERDESCR