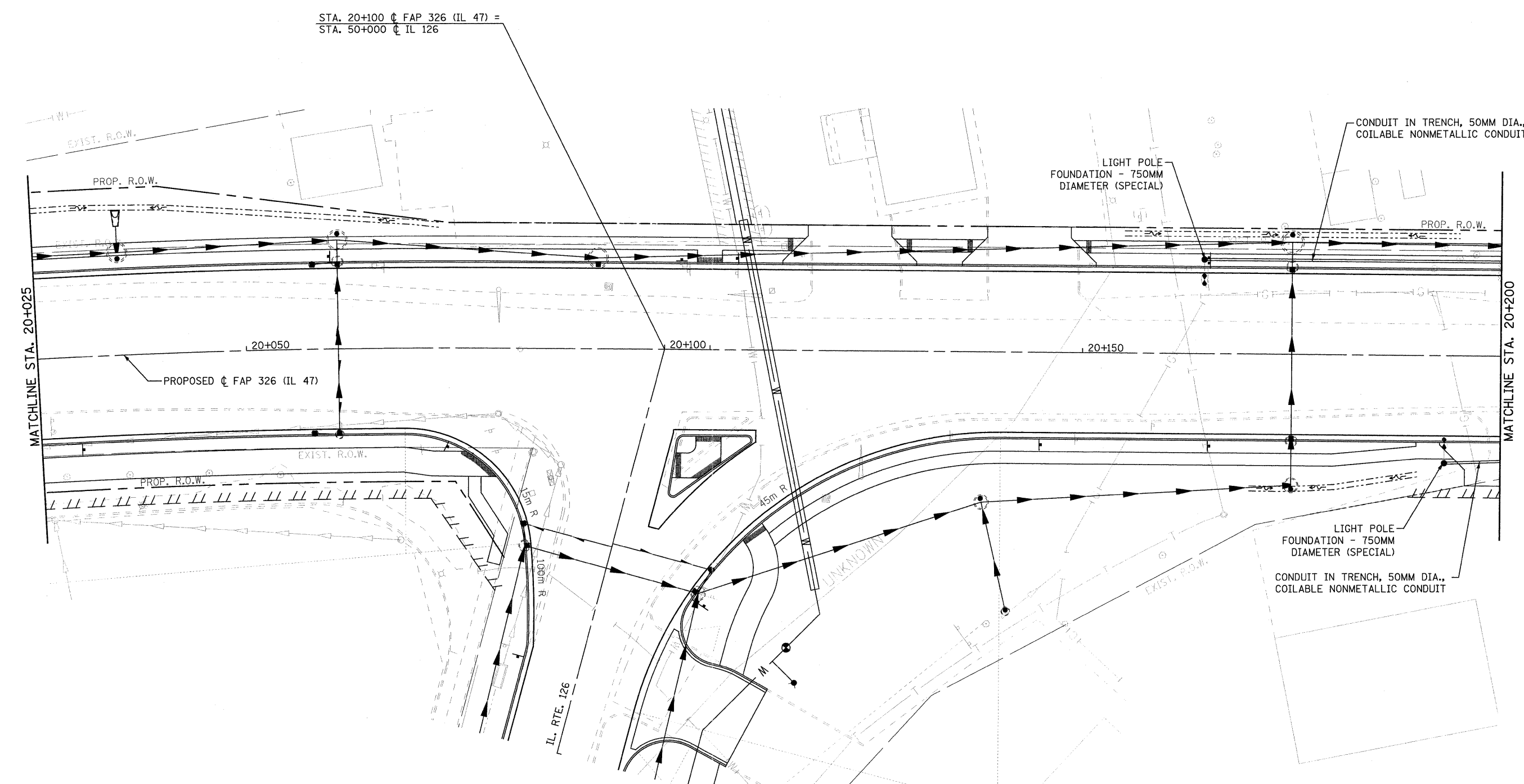
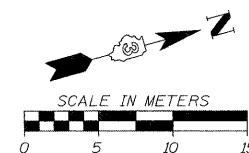


F.A.P. RTE.	SECTION	COUNTY	TOTAL SHEETS	SHEET NO.
326	(5CS,13C,108,109R)	KENDALL	931	648
STA.		TO STA.		
FED. ROAD DIST. NO.		ILLINOIS FED. AID PROJECT		



NOTES:

1. DECORATIVE LIGHT POLES/FIXTURES, CONTROLLERS, AND WIRING TO BE INSTALLED BY THE CITY OF YORKVILLE AT A LATER DATE
2. SEE SIGNAL PLANS FOR LIGHTING AT SIGNALIZED INTERSECTIONS



FILE: 648lighting13.dgn  
PLOTTED: 8/11/2011

Sheet: 13  
Angle: 74.7702  
Chain: P-11.47

HMG JOB NO. 5122