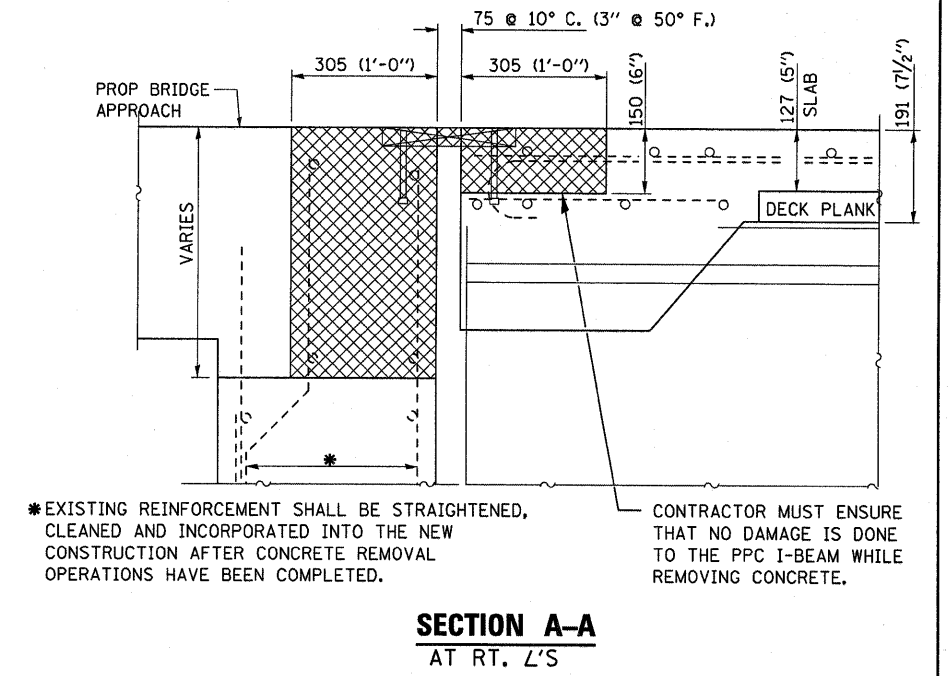


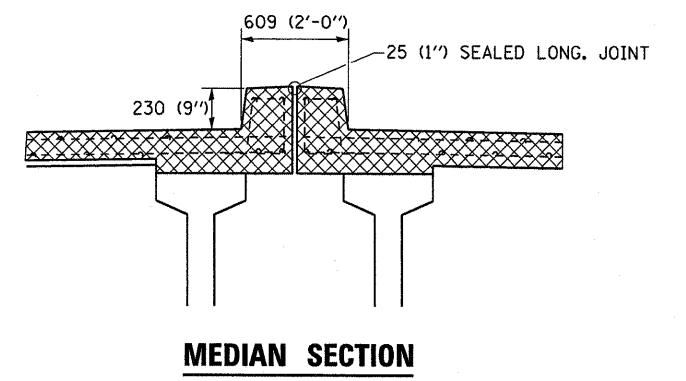
BILL OF MATERIAL

ITEM	UNIT	TOTAL
CONCRETE REMOVAL	CU M	11.0



*EXISTING REINFORCEMENT SHALL BE STRAIGHTENED, CLEANED AND INCORPORATED INTO THE NEW CONSTRUCTION AFTER CONCRETE REMOVAL OPERATIONS HAVE BEEN COMPLETED.

CONTRACTOR MUST ENSURE THAT NO DAMAGE IS DONE TO THE PPC I-BEAM WHILE REMOVING CONCRETE.



NOTE:

CROSSED HATCHED AREA REPRESENTS CONCRETE REMOVAL AND REPLACEMENT AREAS.

THE CONTRACTOR SHALL EXERCISE EXTREME CARE WHEN REMOVING AND REPLACING CONCRETE SO THAT THE EXISTING PPC DECK PLANKS ARE NOT DAMAGED. IF THE EXISTING DECK PLANKS ARE DAMAGED DUE TO THE CONTRACTOR'S OPERATION, THE DAMAGED PLANK SHALL BE REPAIRED AT THE CONTRACTOR'S EXPENSE.

COST FOR REMOVAL OF EXISTING EXPANSION JOINT MATERIALS SHALL BE INCLUDED WITH "CONCRETE REMOVAL"

EXISTING PLATES AND STUDS FOR THE BICYCLE RAILING SHALL REMAIN IN PLACE WHEN PRESENT. IF THE BICYCLE RAIL ASSEMBLY IS DAMAGED DUE TO THE CONTRACTOR'S REMOVAL OPERATIONS, THE ASSEMBLY SHALL BE REPLACED AT THE CONTRACTOR'S EXPENSE. THE EXISTING ASSEMBLY SHALL BE CLEANED AND INCORPORATED INTO THE NEW CONSTRUCTION.