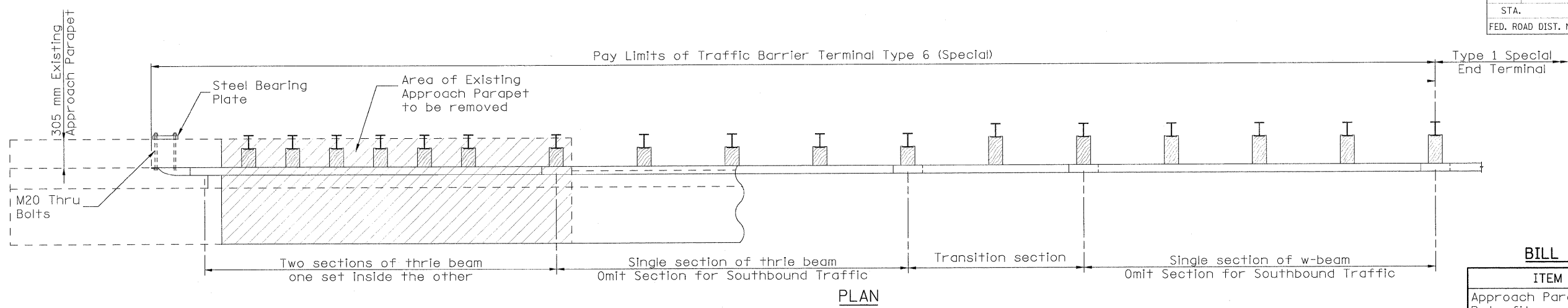
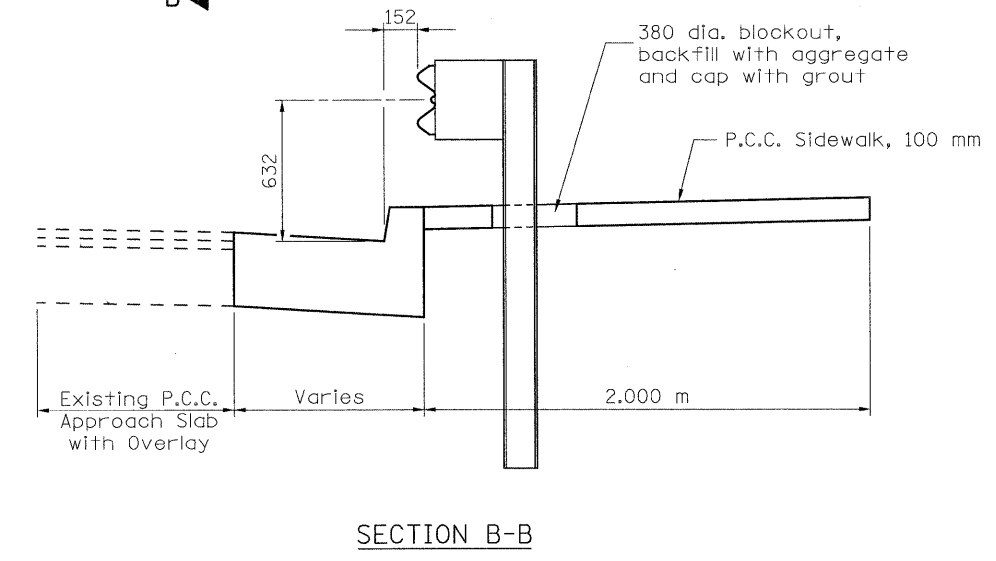
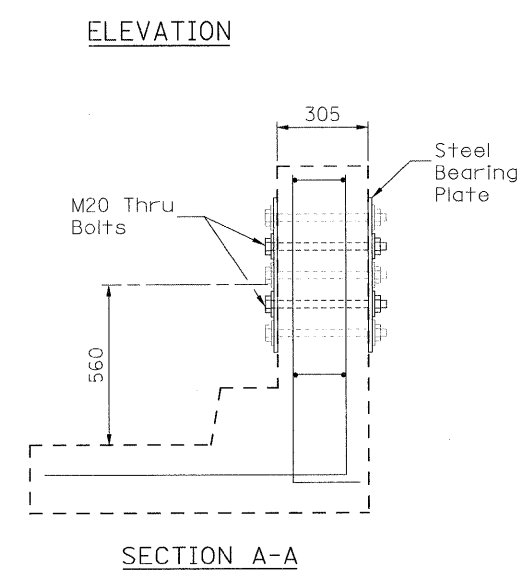
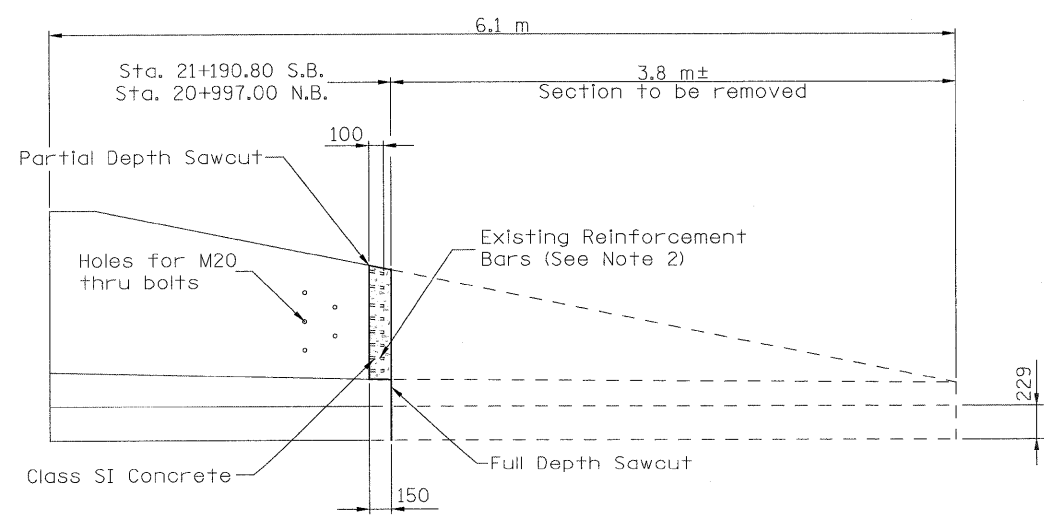
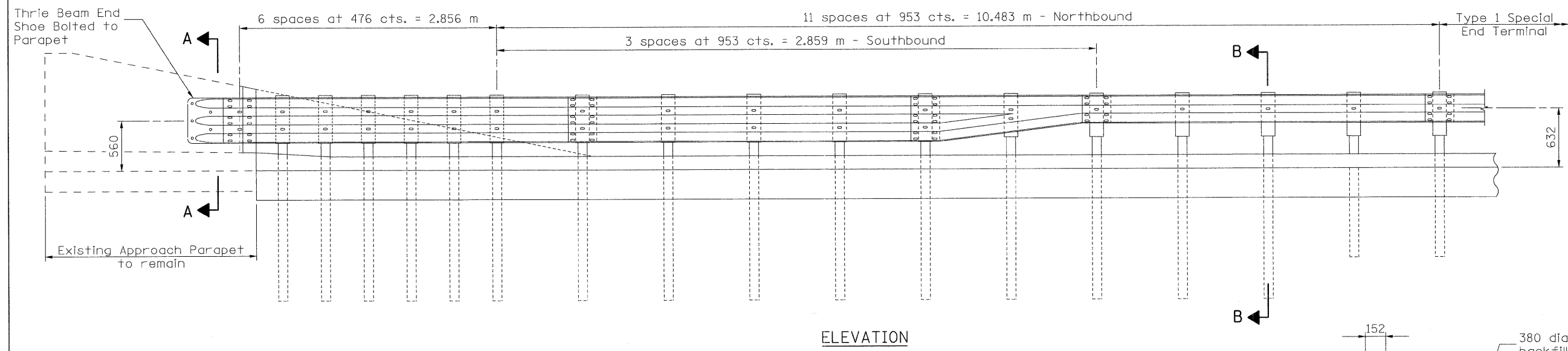


F.A.P. RTE.	SECTION	COUNTY	TOTAL SHEETS	SHEET NO.
326	(5CS,13C,108,109R)	KENDALL	931	665
STA.	TO STA.			
FED. ROAD DIST. NO.	ILLINOIS	FED. AID PROJECT		



BILL OF MATERIAL

ITEM	UNIT	QUANTITY
Approach Parapet Retrofit	Each	2



- Notes:**
- See Standard 631031-08 for details of guardrail not shown.
 - The contractor shall use care in the salvage of existing reinforcement bars. Existing bars shall be cleaned, straightened, and incorporated into new construction.
 - The cost of sawcutting, concrete removal, Class SI Concrete and salvaging reinforcement shall be included in the cost of Approach Parapet Retrofit. See Special Provisions.
 - Thrie beam rail shall be bolted to block-out at all posts.
 - All dimensions are in millimeters unless otherwise noted:

REVISIONS		ILLINOIS DEPARTMENT OF TRANSPORTATION APPROACH PARAPET RETROFIT AND GUARDRAIL DETAILS
NAME	DATE	
		DRAWN BY CHECKED BY DATE

FILE: 665bridge end section det.sht.dgn
PLOTTED: 8/11/2011

HMG JOB NO. 5122