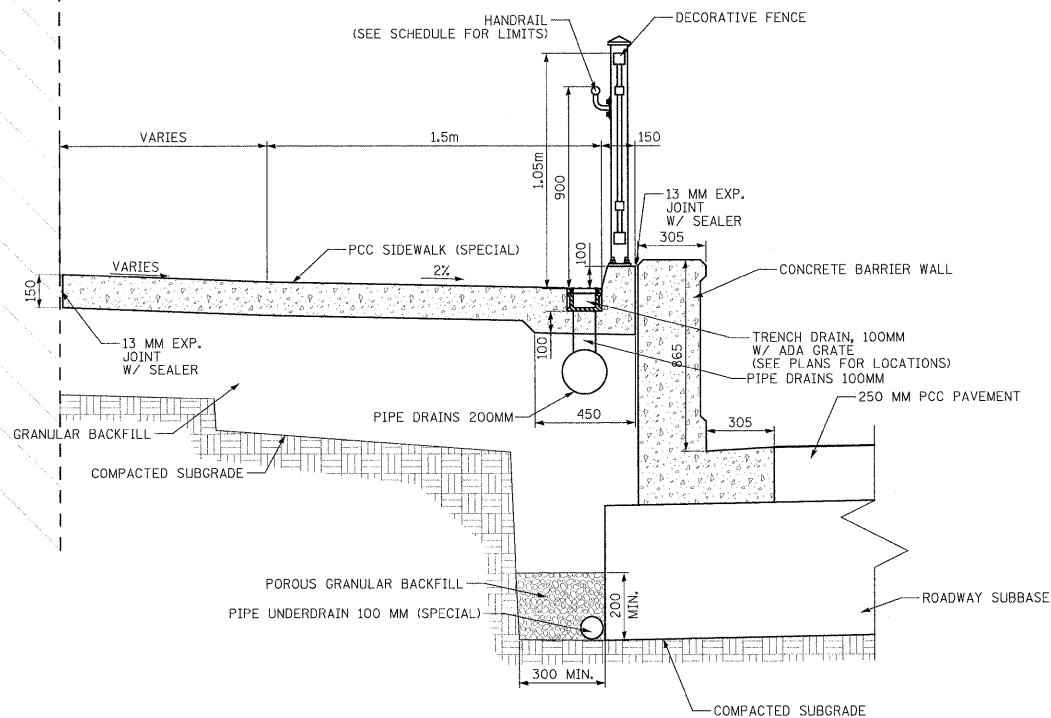
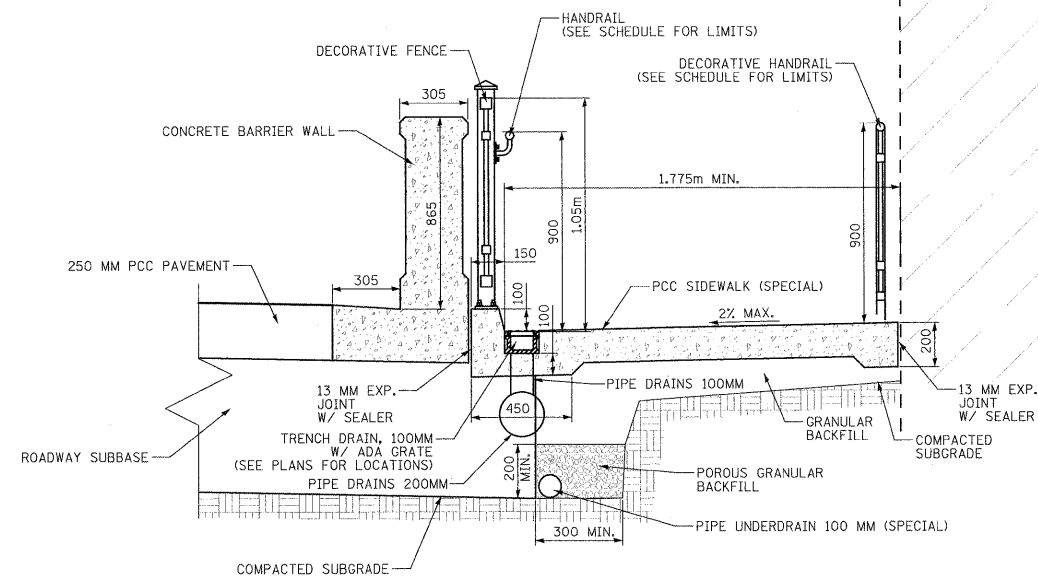


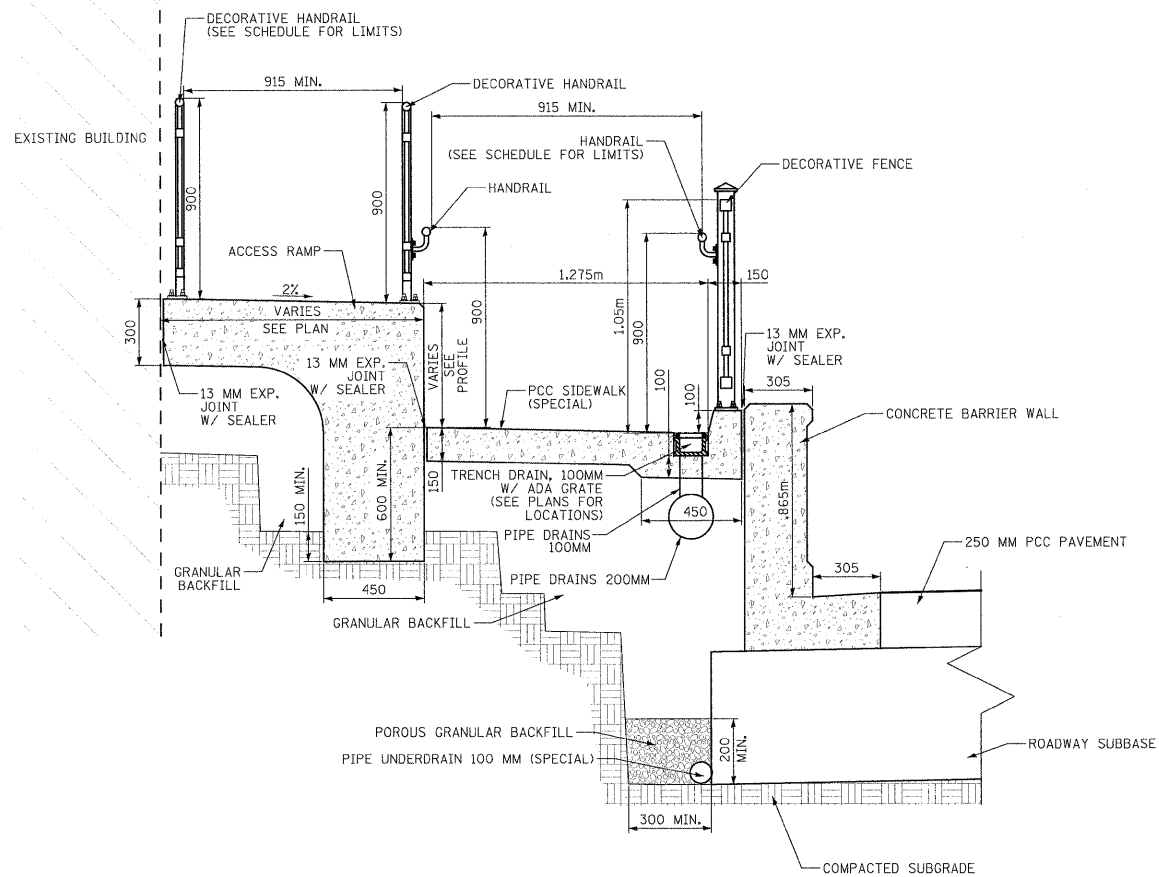
| | | | | |
|---------------------|--------------------|---------|------------------|-----------|
| F.A.P. RTE. | SECTION | COUNTY | TOTAL SHEETS | SHEET NO. |
| 326 | (6CS,13C,108,109R) | KENDALL | 931 | 683 |
| STA. | TO STA. | | | |
| FED. ROAD DIST. NO. | ILLINOIS | | FED. AID PROJECT | |



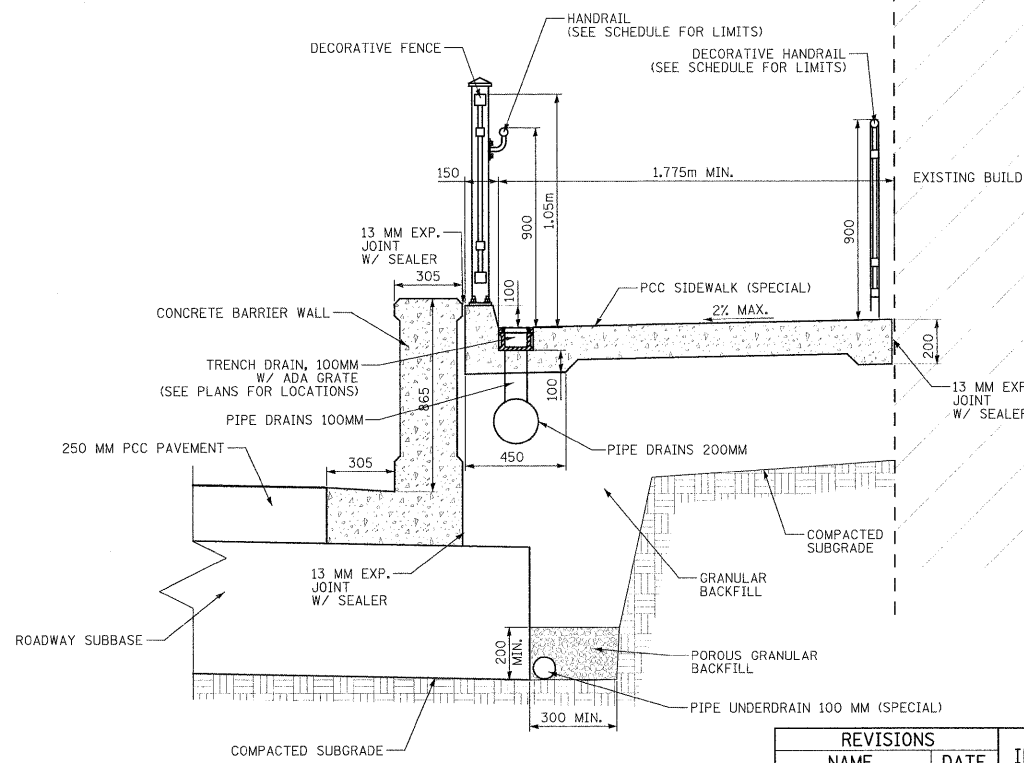
SECTION A-A



SECTION C-C



SECTION B-B



SECTION D-D

| REVISIONS | |
|-----------|------|
| NAME | DATE |
| | |
| | |
| | |
| | |
| | |

ILLINOIS DEPARTMENT OF TRANSPORTATION

DOWNTOWN DETAILS SECTIONS

DATE _____ DRAWN BY _____ CHECKED BY _____

FILE: 679-688DET_SHT_downtown_details.dgn PLOTTED: 8/11/2011

PIPE DRAINS SHALL BE INSTALLED AT A MINIMUM 2% SLOPE TO THE NEAREST DRAINAGE STRUCTURE. ALL FITTINGS REQUIRED TO COMPLETE INSTALLATION SHALL BE INCLUDED IN THE COST OF PIPE DRAINS.