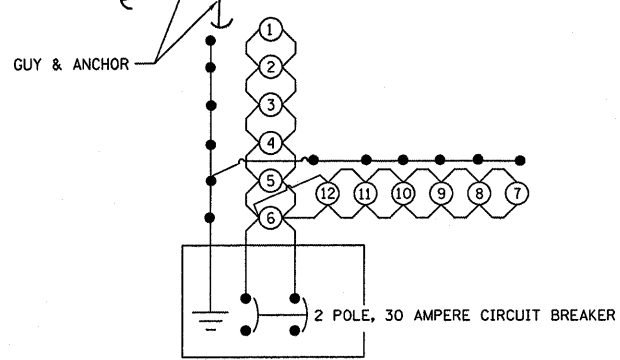
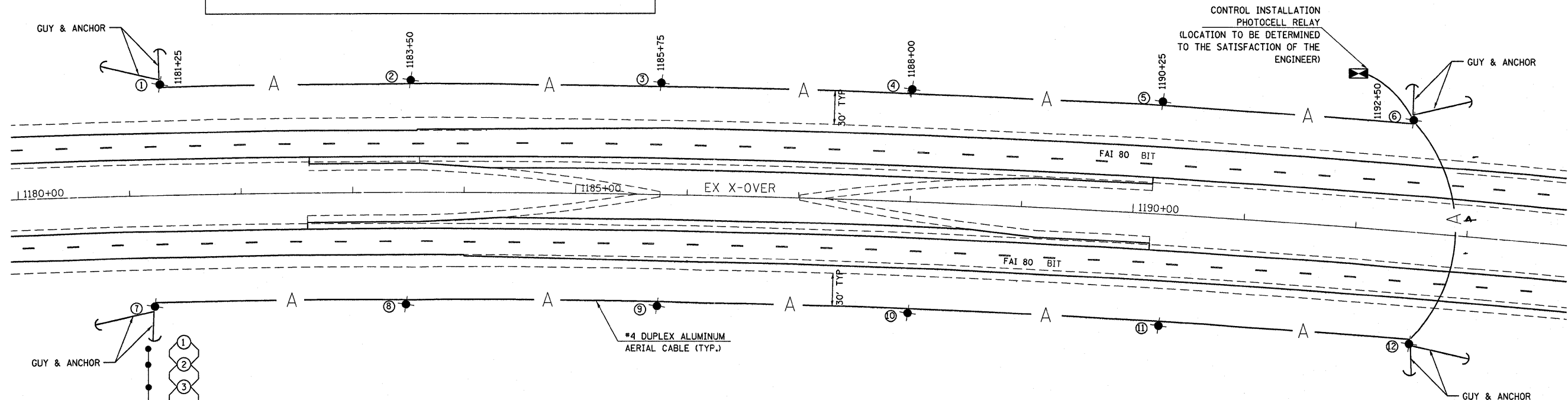


NOTES:

1. POLE HEIGHT SHALL BE INCREASED AS NECESSARY TO MAINTAIN A MINIMUM CLEARANCE OF 20' OF AERIAL CABLE OVER ROADWAY AT ALL TIMES
2. GUYS AND ANCHORS ARE SHOWN AS AS EXAMPLE AND SHALL BE INSTALLED AS NECESSARY TO THE SATISFACTION OF THE ENGINEER.
3. TEMPORARY WOOD PANELS SHALL BE SET BACK MINIMUM OF 30 FT FROM EXISTING EDGE OF PAVEMENT AND OUTSIDE THE CLEAR ZONE.
4. TRAFFIC MAY NOT USE MEDIAN CROSSOVERS UNTIL TEMPORARY LIGHTING IS OPERATIONAL



CONTROL INSTALLATION - PHOTOCELL RELAY  
WIRING DIAGRAM

- LEGEND
- TEMPORARY LIGHTING UNIT, 50 FT WOOD POLE, CLASS 3 WITH 250W HPS MULTI MOUNT LUMINAIRE
  - A- AERIAL CABLE, 2-1/2" NO.4 ALUMINUM WITH MESSAGE WIRE.
  - ☒ TEMPORARY LIGHTING CONTROLLER AND ELECTRIC SERVICE 30A, 240V, 1 PHASE AND 3 WIRE.

CODE	ITEM DESCRIPTION	UNIT	QUANTITY
X0326215	REMOVE TEMPORARY LIGHTING SYSTEM	L SUM	1
X8410102	TEMPORARY LIGHTING SYSTEM	L SUM	1
X8410118	MAINTENANCE OF TEMPORARY LIGHTING SYSTEM	L SUM	1

FILE NAME =	USER NAME = brcbaypc	DESIGNED -	REVISED -
et:\pw\work\p\dot\brebaypc\d\212731\036886-shr-cover.dgn		DRAWN -	REVISED -
PLOT SCALE = 5/8"=1' / in.		CHECKED -	REVISED -
PLOT DATE = 9/18/2011		DATE -	REVISED -

STATE OF ILLINOIS  
DEPARTMENT OF TRANSPORTATION

TEMPORARY LIGHTING DETAILS

SCALE: \_\_\_\_\_ SHEET NO. \_\_\_\_\_ OF \_\_\_\_\_ SHEETS STA. \_\_\_\_\_ TO STA. \_\_\_\_\_

F.A.I. RTE.	SECTION	COUNTY	TOTAL SHEETS	SHEET NO.
80	(06-5)HBR-1.VBR(06-6)RS-3&I	BUREAU	249	66
ILLINOIS FED. AID PROJECT			CONTRACT NO. 66606	