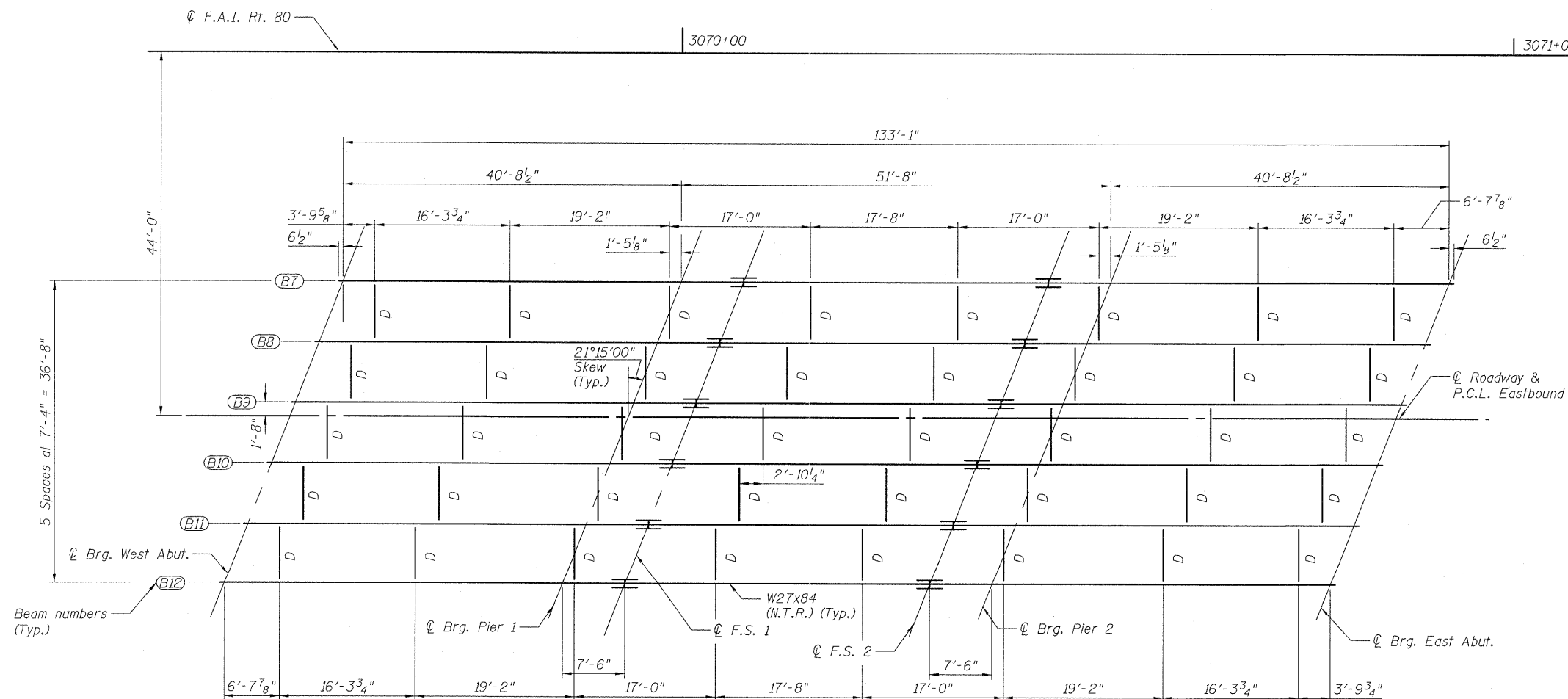
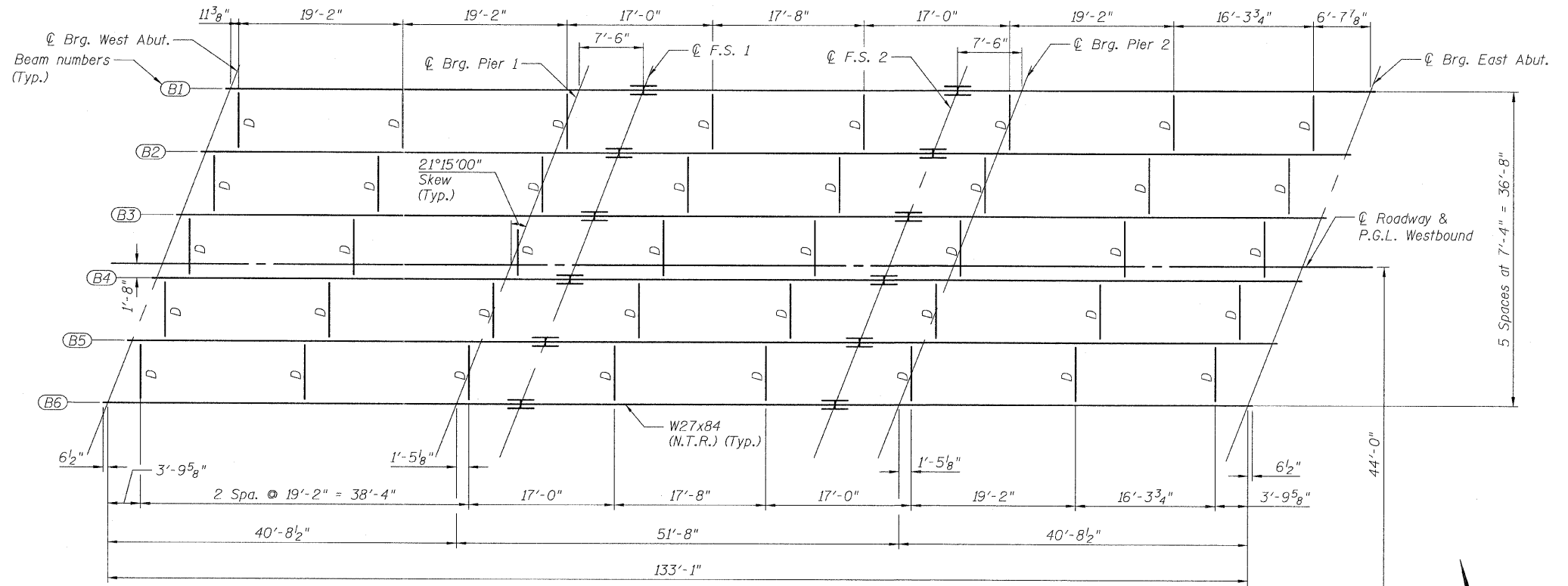


TOP OF BEAM ELEVATIONS *

BEAM	CL BRG. W. ABUT	CL PIER 1	F.S. 1	F.S. 2	CL PIER 2	CL BRG. E. ABUT
B1	731.06	732.29	732.52	733.63	733.86	735.09
B2	731.13	732.36	732.59	733.70	733.92	735.16
B3	731.16	732.39	732.62	733.73	733.96	735.19
B4	731.14	732.37	732.60	733.71	733.93	735.17
B5	730.93	732.17	732.40	733.51	733.73	734.97
B6	730.71	731.94	732.17	733.28	733.51	734.74
B7	729.50	730.71	730.93	732.01	732.24	733.44
B8	729.56	730.76	730.98	732.07	732.29	733.49
B9	729.59	730.79	731.01	732.10	732.32	733.52
B10	729.44	730.64	730.87	731.95	732.17	733.38
B11	729.23	730.44	730.66	731.75	731.97	733.17
B12	729.00	730.20	730.42	731.51	731.73	732.94

* For Fabrication use only.



FRAMING PLAN

NOTES:

1. F.S. - denotes girder Field Splice.
2. All structural steel for girders and splice plates shall conform to the requirements of AASHTO M270, Grade 50.
3. All diaphragms shall be installed as steel is erected and secured with erection pins and bolts except as otherwise noted. Individual diaphragms at supports may be temporarily disconnected to install bearing anchor rods.

FILE NAME =	USER NAME =	DESIGNED - DY	REVISED -	STATE OF ILLINOIS DEPARTMENT OF TRANSPORTATION	FRAMING PLAN STRUCTURE NO. 006-0020 EB AND 006-0021 WB	F.A.I. RTE.	SECTION	COUNTY	TOTAL SHEETS	SHEET NO.	
TYLIN INTERNATIONAL	PLOT SCALE =	CHECKED - PF	REVISED -			80	006-5HBR-1.VBR(06-6)RS-3&I	BUREAU	249	8	
	PLOT DATE = 09/13/2011	DRAWN - DY	REVISED -			CONTRACT NO. 66686					
		CHECKED - PF	REVISED -			ILLINOIS FED. AID PROJECT					

#FILES

#FILES