

GENERAL NOTES

Fasteners shall be AASHTO M164 Type 1, mechanically galvanized bolts. Bolts 7/8" φ, open holes 15/16" φ, unless otherwise noted.

Calculated weight of Structural Steel = 676,420 lb. Grade 50
73,600 lb. Grade 36

No field welding is permitted except as specified in the contract documents.

Reinforcement bars shall conform to the requirements of ASTM A 706 Gr 60.

Reinforcement bars designated (E) shall be epoxy coated.

If the Contractor elects to use cantilever forming brackets on the exterior beams or girders, the brackets shall be placed at the same locations as required for the hardwood blocks in Article 503.06(b) of the Standard Specifications. If additional cantilever forming brackets are required, hardwood blocking shall be wedged between the exterior and first interior beam at each of these additional bracket locations.

Bearing seat surfaces shall be constructed or adjusted to the designated elevations within a tolerance of 1/8" (0.01 ft.). Adjustment shall be made either by grinding the surface or by shimmed the bearings.

The existing structural steel coating contains lead. The Contractor shall take appropriate precautions to deal with the presence of lead on this project.

The Organic Zinc Rich Primer/Epoxy/Urethane Paint System shall be used for painting of new structural steel except where otherwise noted. The entire system shall be shop applied, with the exception that the exterior surfaces and bottom of the bottom flange of the fascia beams, masked off connection surfaces, and field installed fasteners, all of which shall be touched up and finish coated in the field. The color of the final finish coat for all interior steel surfaces shall be gray Munsell No. 5B 7/1. The color of the final finish coat for the exterior and bottom flange of the fascia beams shall be Interstate Green, Munsell No. 7.5G 4/8. See Special Provision for "Cleaning and Painting New Metal Structures".

The embankment configuration shown shall be the minimum that must be placed and compacted prior to construction of the abutments.

Sloped wall shall be reinforced with welded wire fabric, 6" x 6" - W4.0 x W4.0, weighing 58 lbs. per 100 sq. ft.

INDEX OF SHEETS

General Plan & Elevation 1
 General Data 2
 Foundation Layout 3
 Temporary Soil Retention 4
 Top of Slab Elevations Layout 5
 Top of Slab Elevations-Eastbound (1 of 2) 6
 Top of Slab Elevations-Eastbound (2 of 2) 7
 Top of Slab Elevations-Westbound (1 of 2) 8
 Top of Slab Elevations-Westbound (2 of 2) 9
 Top of Approach Slab Elevations (Eastbound) 10
 Top of Approach Slab Elevations (Westbound) 11
 Superstructure 12
 Superstructure Details 1 13
 Superstructure Details 2 14
 Superstructure Details 3 15
 Bridge Approach Slab Details - Eastbound (1 of 2) 16
 Bridge Approach Slab Details - Eastbound (2 of 2) 17
 Bridge Approach Slab Details - Westbound (1 of 2) 18
 Bridge Approach Slab Details - Westbound (2 of 2) 19
 Framing Plan 20
 Girder Elevation and Details 21
 Structural Steel Details 22
 Bearing Details 23
 West Abutment - Eastbound 24
 East Abutment - Eastbound 25
 West Abutment - Westbound 26
 East Abutment - Westbound 27
 Pier 1 - Eastbound 28
 Pier 2 - Eastbound 29
 Pier 1 - Westbound 30
 Pier 2 - Westbound 31
 Sloped Wall Layout 32
 Mechanical Splicer/Bar Splicer Details 33
 HP Pile Details 34
 Concrete Parapet Slipforming Option 35
 Soil Borings 36-43

TOTAL BILL OF MATERIAL

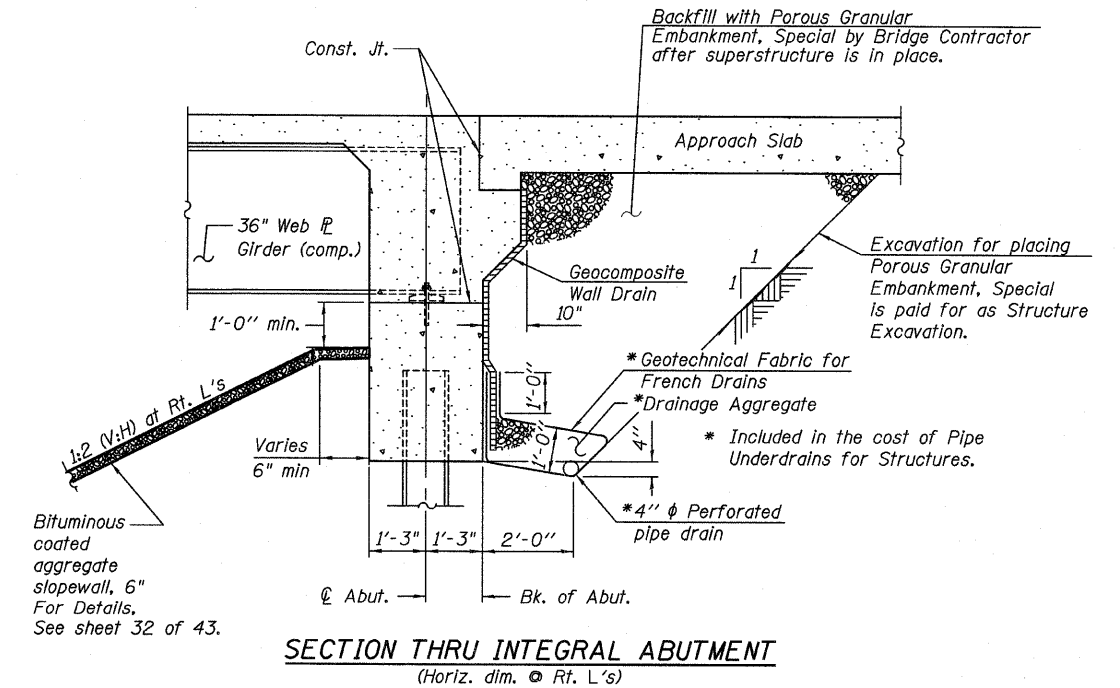
ITEM	UNIT	SN 006-0176		SN 006-0177		TOTAL
		SUPER	SUB	SUPER	SUB	
POROUS GRANULAR EMBANKMENT, SPECIAL	CU YD		204		204	408
REMOVAL OF EXISTING STRUCTURES NO. 1	EACH					1
REMOVAL OF EXISTING STRUCTURES NO. 2	EACH					1
PROTECTIVE SHIELD	SQ YD	324		308		632
STRUCTURE EXCAVATION	CU YD		786		737	1,523
CONCRETE STRUCTURES	CU YD		316.7		318.1	634.8
CONCRETE SUPERSTRUCTURE	CU YD	557.6		557.6		1,115.2
BRIDGE DECK GROOVING	SQ YD	1,509		1,509		3,018
CONCRETE ENCASEMENT	CU YD		10		10	20
PROTECTIVE COAT	SQ YD	1,839		1,839		3,678
FURNISHING AND ERECTING STRUCTURAL STEEL	L SUM	0.41		0.41		0.82
STUD SHEAR CONNECTORS	EACH	5,304		5,304		10,608
REINFORCEMENT BARS, EPOXY COATED	POUND	122,840	47,960	122,840	48,360	342,000
BAR SPLICERS	EACH	90		90		180
SLOPE WALL 4 INCH	SQ YD		92		93	185
FURNISHING STEEL PILES HP14X73	FOOT		2,939		3,145	6,084
DRIVING PILES	FOOT		2,939		3,145	6,084
TEST PILE STEEL HP14X73	EACH		4		4	8
NAME PLATES	EACH	1		1		2
ANCHOR BOLTS, 1"	EACH	24		24		48
ANCHOR BOLTS, 1 1/4"	EACH	24		24		48
GEOCOMPOSITE WALL DRAIN	SQ YD		107		107	214
PIPE UNDERDRAINS FOR STRUCTURES 4"	FOOT		182		182	364
BITUMINOUS COATED AGGREGATE SLOPEWALL 6"	SQ YD		1,064		1,059	2,123
TEMPORARY SOIL RETENTION SYSTEM	SQ FT		292		214	506

STATION 3080+44.64
 BUILT 201 BY
 STATE OF ILLINOIS
 F.A.I. RTE 80
 SEC. [(06-5)HBR-1,VBR;(06-6)JRS-3&I
 LOADING HS20 & ALT.
 STR. NO. 006-0176

NAME PLATE EASTBOUND
 See Std. 515001

STATION 3080+44.64
 BUILT 201 BY
 STATE OF ILLINOIS
 F.A.I. RTE 80
 SEC. [(06-5)HBR-1,VBR;(06-6)JRS-3&I
 LOADING HS20 & ALT.
 STR. NO. 006-0177

NAME PLATE WESTBOUND
 See Std. 515001



All drainage system components shall extend to 2'-0" from the end of each wingwall except an outlet pipe shall extend until intersecting with the side slopes. The pipes shall drain into concrete headwalls. (See Article 601.05 of the Standard Specifications and Highway Standard 60110).

FILE NAME =	USER NAME =	DESIGNED - PF	REVISED -	STATE OF ILLINOIS DEPARTMENT OF TRANSPORTATION	GENERAL DATA STRUCTURE NO. 006-0176 EB AND 006-0177 WB	F.A.I. RTE.	SECTION	COUNTY	TOTAL SHEETS	SHEET NO.	
TYLIN INTERNATIONAL		CHECKED - PF	REVISED -			80	[(06-5)HBR-1,VBR;(06-6)JRS-3&I	BUREAU	249	106	
	PLOT SCALE =	DRAWN - DY	REVISED -			CONTRACT NO. 66686		ILLINOIS FED. AID PROJECT			
	PLOT DATE = 09/13/2011	CHECKED - PF	REVISED -			SHEET NO. 2 OF 43 SHEETS					