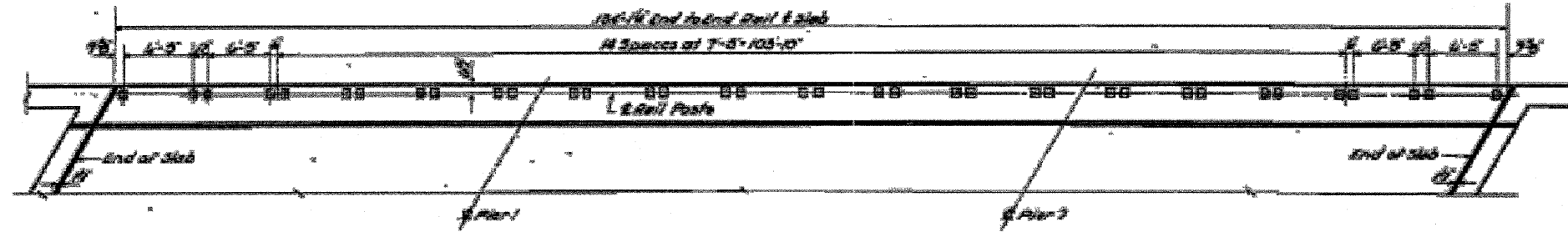
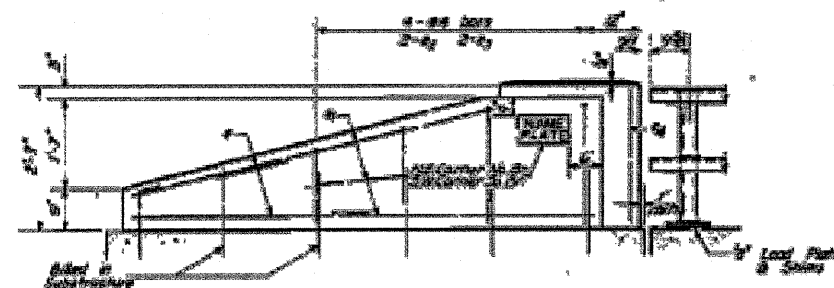


STATE OF ILLINOIS  
DEPARTMENT OF PUBLIC WORKS & BUILDINGS  
DIVISION OF HIGHWAYS

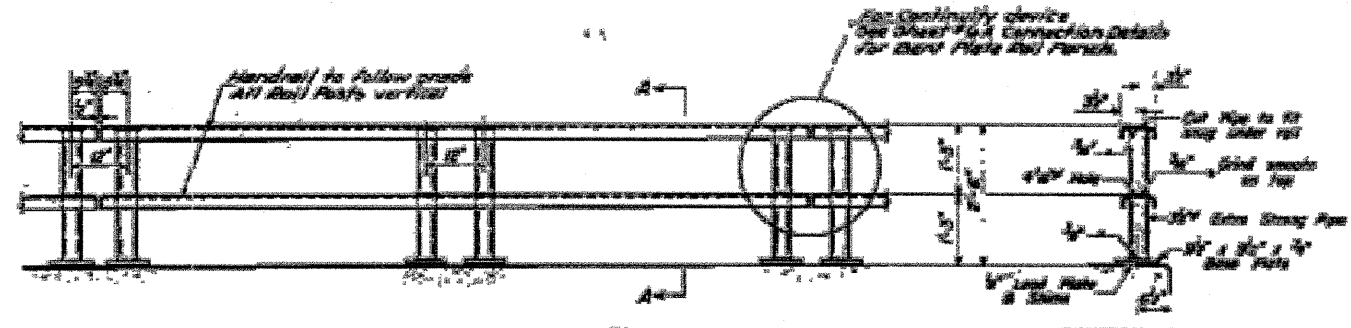
NO.	DATE	BY	CHK.	APP.	REVISION
1	10/10/58	BRABO	BR	BR	



PLAN  
Showing Spacing of Rail Posts

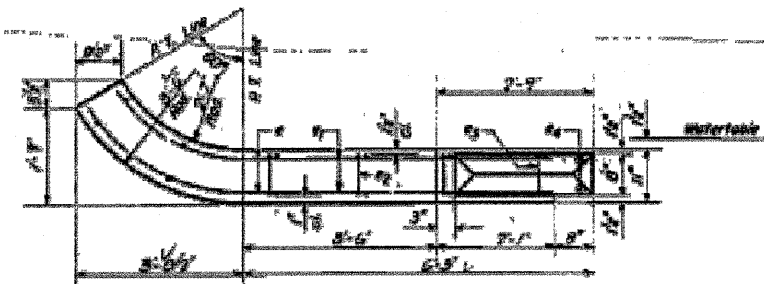


ELEVATION

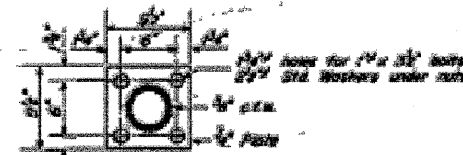


ELEVATION TYPICAL PANEL

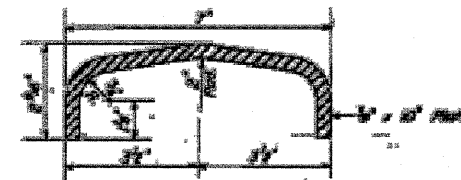
SECTION A-A



PLAN - END POST



BASE PLATE  
ALL POSTS - SUPERSTRUCTURE



DETAIL OF RAIL

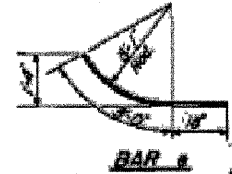
(TWO BRIDGES)  
BILL OF MATERIAL

Standard Concrete	Cu. Yd. 46
Reinforcement Bars	Lbs. 373
Steel Hardware	Units 337

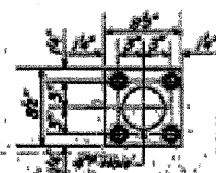
**GENERAL NOTES**  
All Rail Posts shall be standard  
Concrete.  
After erection of rails and anchors  
shall be kept covered with any  
kind of soil and covered with  
two coats of asphaltum paint.  
Posts 1'-0\"/>

BILL OF REINFORCEMENT

Bar	No.	Size	Length	Shape
1	37	#4	4'-6"	
2	48	#4	5'-0"	
3	12	#4	3'-4"	
4	12	#4	3'-0"	
5	12	#4	2'-5"	



BAR #1



BAR #2 OF #3



ANCHOR DEVICE  
AT Single Post



ANCHOR DEVICE  
AT Double Post

ANCHOR (No. 50, 51)

DESIGNED BY: *[Signature]*  
DRAWN BY: *[Signature]*  
CHECKED BY: *[Signature]*  
DATE: 9-18-58

R-6 No. Draw 9-18-58

FOR INFORMATION ONLY

FILE NAME =	USER NAME = braboyce	DESIGNED -	REVISED -	STATE OF ILLINOIS DEPARTMENT OF TRANSPORTATION	EXISTING BRIDGE PLANS	SCALE: _____ SHEET NO. ____ OF ____ SHEETS STA. _____ TO STA. _____	F.A. RTE.	SECTION	COUNTY	TOTAL SHEETS	SHEET NO.
en:\pw\work\p\idot\braboyce\d212731\036686-sht-cover.dgn	PLOT SCALE = 50.0050' / in.	DRAWN -	REVISED -				80	(106-5)HBR-1.VBR(06-6)RS-3&I	BUREAU	249	155
PLOT DATE = 9/18/2011	DATE -	CHECKED -	REVISED -				CONTRACT NO. 66686				
							ILLINOIS FED. AID PROJECT				