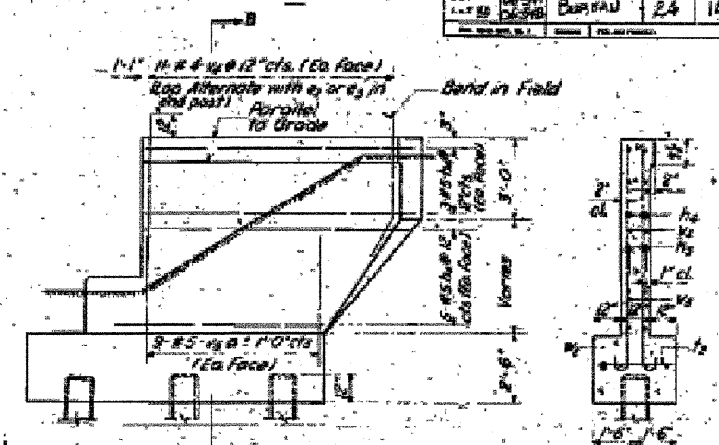
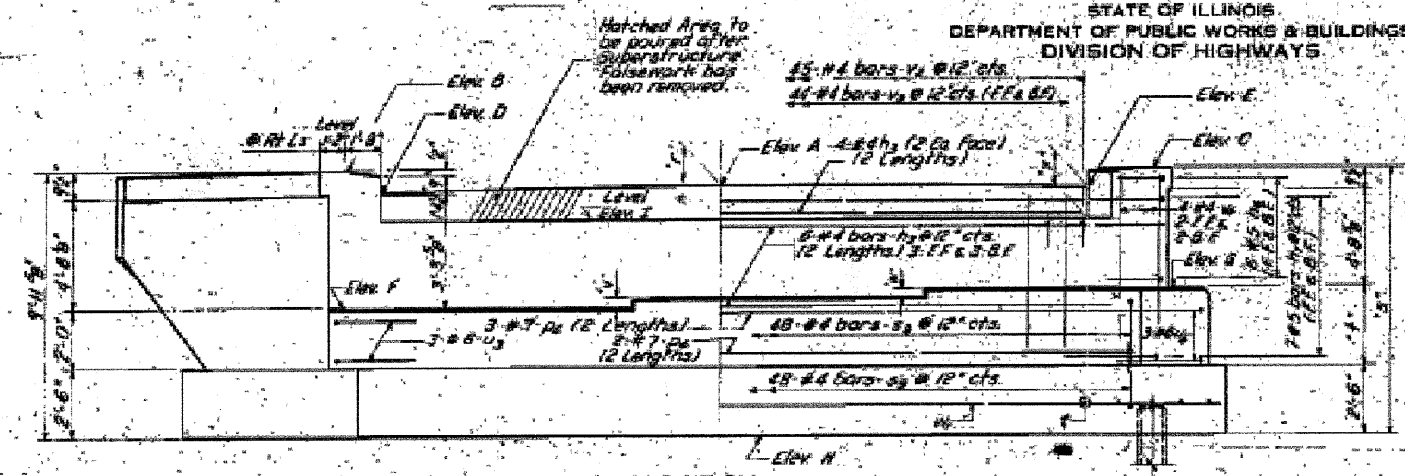


STATE OF ILLINOIS  
DEPARTMENT OF PUBLIC WORKS & BUILDINGS  
DIVISION OF HIGHWAYS

PROJECT NO.	SECTION	DATE	SCALE	SHEET NO.
106-51HR-1	BUREAU	24	14	12 SHEETS



ELEVATION  
TABLE OF DIMENSIONS

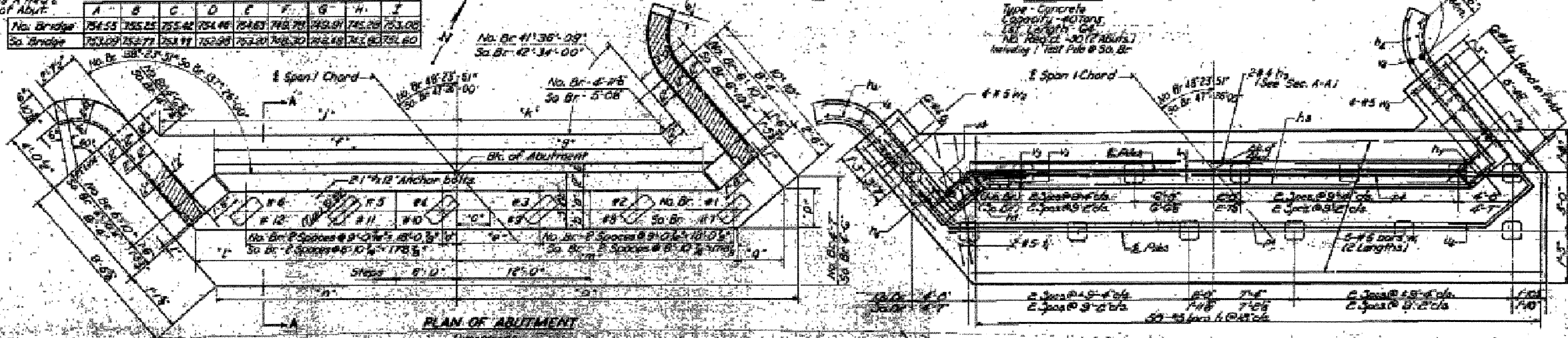
	a	b	c	d	e	f	g	h	i	j	k	l	m	n	o	p	q	r	s	t	u	v	w	x	y
No. Bridge	11.8'	12.4'	22.5'	23.3'	23.4'	23.4'	23.4'	23.4'	23.4'	23.4'	23.4'	23.4'	23.4'	23.4'	23.4'	23.4'	23.4'	23.4'	23.4'	23.4'	23.4'	23.4'	23.4'	23.4'	
So. Bridge	12.3'	11.8'	22.5'	23.3'	23.4'	23.4'	23.4'	23.4'	23.4'	23.4'	23.4'	23.4'	23.4'	23.4'	23.4'	23.4'	23.4'	23.4'	23.4'	23.4'	23.4'	23.4'	23.4'	23.4'	

TABLE OF ELEVATIONS

	A	B	C	D	E	F	G	H	I
No. Bridge	754.55	755.25	755.42	754.48	754.83	748.79	748.91	745.28	753.00
So. Bridge	753.09	752.72	753.11	752.98	752.20	748.30	748.40	742.80	752.80

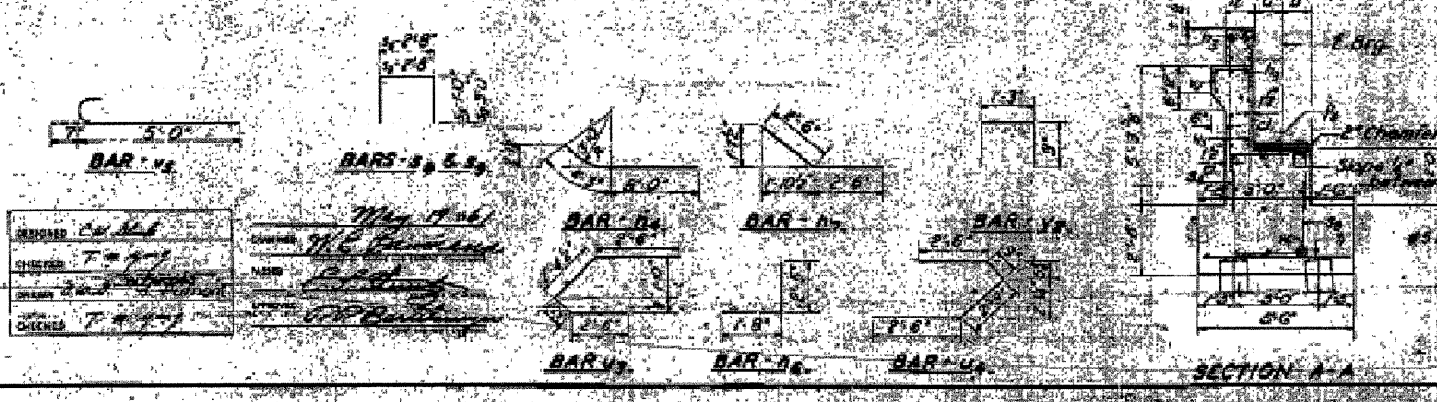
PILE DATA

Type - Concrete  
Capacity - 40 TONS  
Set Length - 60'  
No. Piles - 30 (7 Abutts.)  
Including 1 Test Pile @ So. Br.



PLAN OF ABUTMENT

DETAIL OF ABUTMENT



SECTION A-A

BILL OF MATERIAL (2 ABUTMENTS)

Bar	No.	Size	Length	Shape	Bar	No.	Size	Length	Shape
1	18	#4	23.5'	U	1	20	#4	13.0'	U
2	24	#5	12.3'	U	2	175	#4	51.0'	U
3	40	#5	8.8'	U	3	108	#4	8.8'	U
4	48	#5	4.7'	U	4	12	#5	5.7'	U
5	56	#5	5.0'	U	5	20	#5	15.0'	U
6	20	#7	23.0'	U	6	26	#5	10.0'	U
7	26	#4	5.1'	U	7	26	#5	10.0'	U
8	26	#4	5.0'	U	8	26	#5	10.0'	U
9	26	#4	5.0'	U	9	26	#5	10.0'	U
10	26	#4	5.0'	U	10	26	#5	10.0'	U
11	26	#4	5.0'	U	11	26	#5	10.0'	U
12	26	#4	5.0'	U	12	26	#5	10.0'	U
13	26	#4	5.0'	U	13	26	#5	10.0'	U
14	26	#4	5.0'	U	14	26	#5	10.0'	U
15	26	#4	5.0'	U	15	26	#5	10.0'	U
16	26	#4	5.0'	U	16	26	#5	10.0'	U
17	26	#4	5.0'	U	17	26	#5	10.0'	U
18	26	#4	5.0'	U	18	26	#5	10.0'	U
19	26	#4	5.0'	U	19	26	#5	10.0'	U
20	26	#4	5.0'	U	20	26	#5	10.0'	U
21	26	#4	5.0'	U	21	26	#5	10.0'	U
22	26	#4	5.0'	U	22	26	#5	10.0'	U
23	26	#4	5.0'	U	23	26	#5	10.0'	U
24	26	#4	5.0'	U	24	26	#5	10.0'	U
25	26	#4	5.0'	U	25	26	#5	10.0'	U
26	26	#4	5.0'	U	26	26	#5	10.0'	U
27	26	#4	5.0'	U	27	26	#5	10.0'	U
28	26	#4	5.0'	U	28	26	#5	10.0'	U
29	26	#4	5.0'	U	29	26	#5	10.0'	U
30	26	#4	5.0'	U	30	26	#5	10.0'	U

Note: Front Row of Piles battered 2-1/2% one direction as shown in Section G-G. All others are straight.

WEST ABUTMENTS  
S.A.T. RT. 80. SEC. 08. 5/18  
BUREAU COUNTY  
STATION 1230+04.12

FOR INFORMATION ONLY