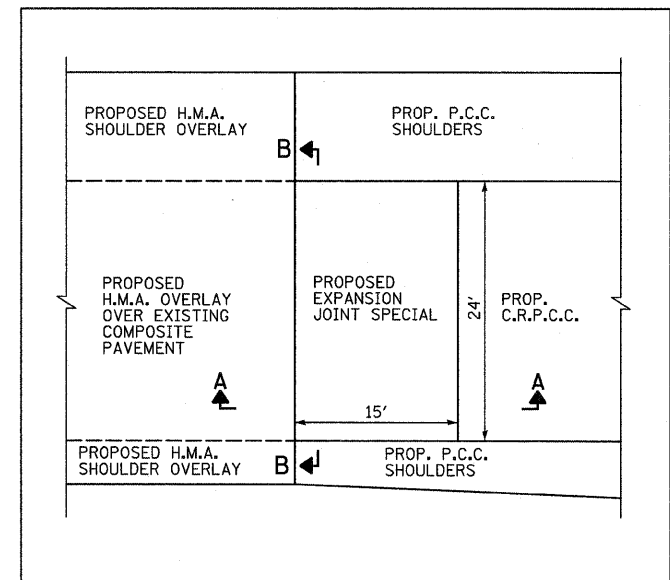
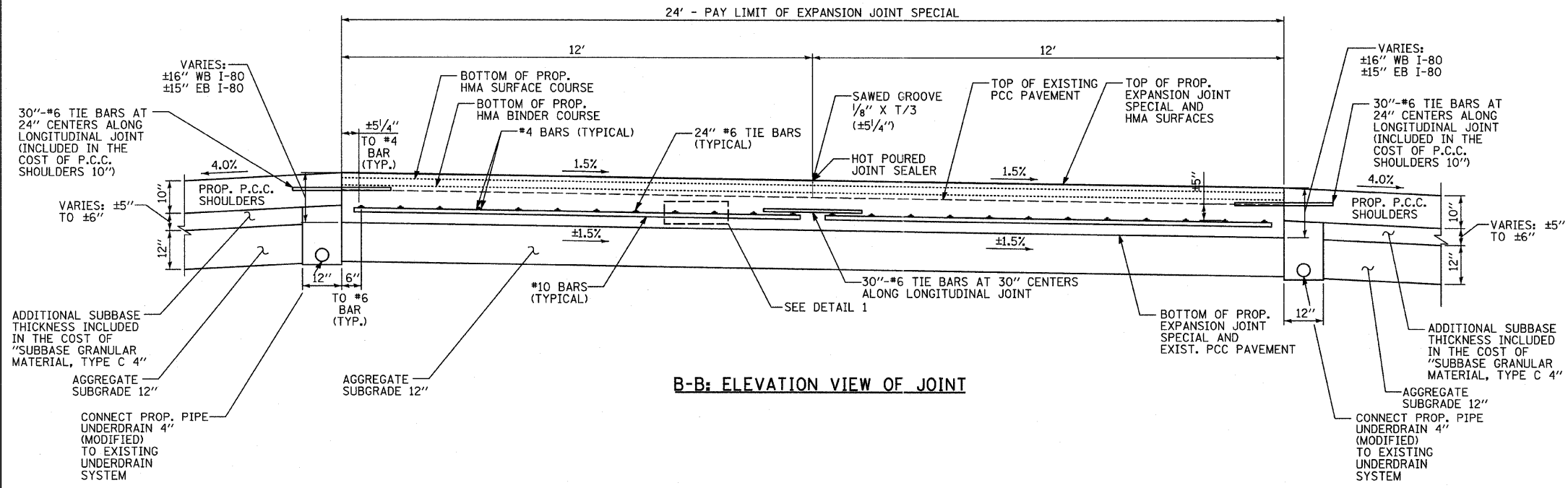


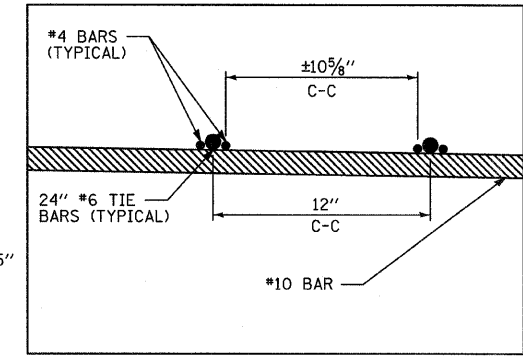
A-A: CROSS SECTION OF EXPANSION JOINT SPECIAL AT WEST RECONSTRUCTION LIMIT



TYPICAL PLAN VIEW OF EXPANSION JOINT SPECIAL (NOT TO SCALE)



B-B: ELEVATION VIEW OF JOINT



DETAIL 1: BAR SPACING DETAILS

NOTE:
ALL BARS SHALL BE EPOXY COATED.

TYLIN INTERNATIONAL	USER NAME =	DESIGNED - CAC	REVISED -	STATE OF ILLINOIS DEPARTMENT OF TRANSPORTATION	F.A.I. ROUTE 80 (I-80) EXPANSION JOINT SPECIAL DETAILS			F.A.I. RTE.	SECTION	COUNTY	TOTAL SHEETS	SHEET NO.
	PLOT SCALE =	DRAWN - CAC	REVISED -		80	[06-5]HBR-1.VBR(06-6)RS-3&I	BUREAU	244	173			
	PLOT DATE =	CHECKED - JDF	REVISED -		SCALE: NONE SHEET NO. 1 OF 2 SHEETS STA. TO STA.			CONTRACT NO. 66686				
		DATE - 9/7/2011	REVISED -		FED. ROAD DIST. NO. [ILLINOIS] FED. AID PROJECT							