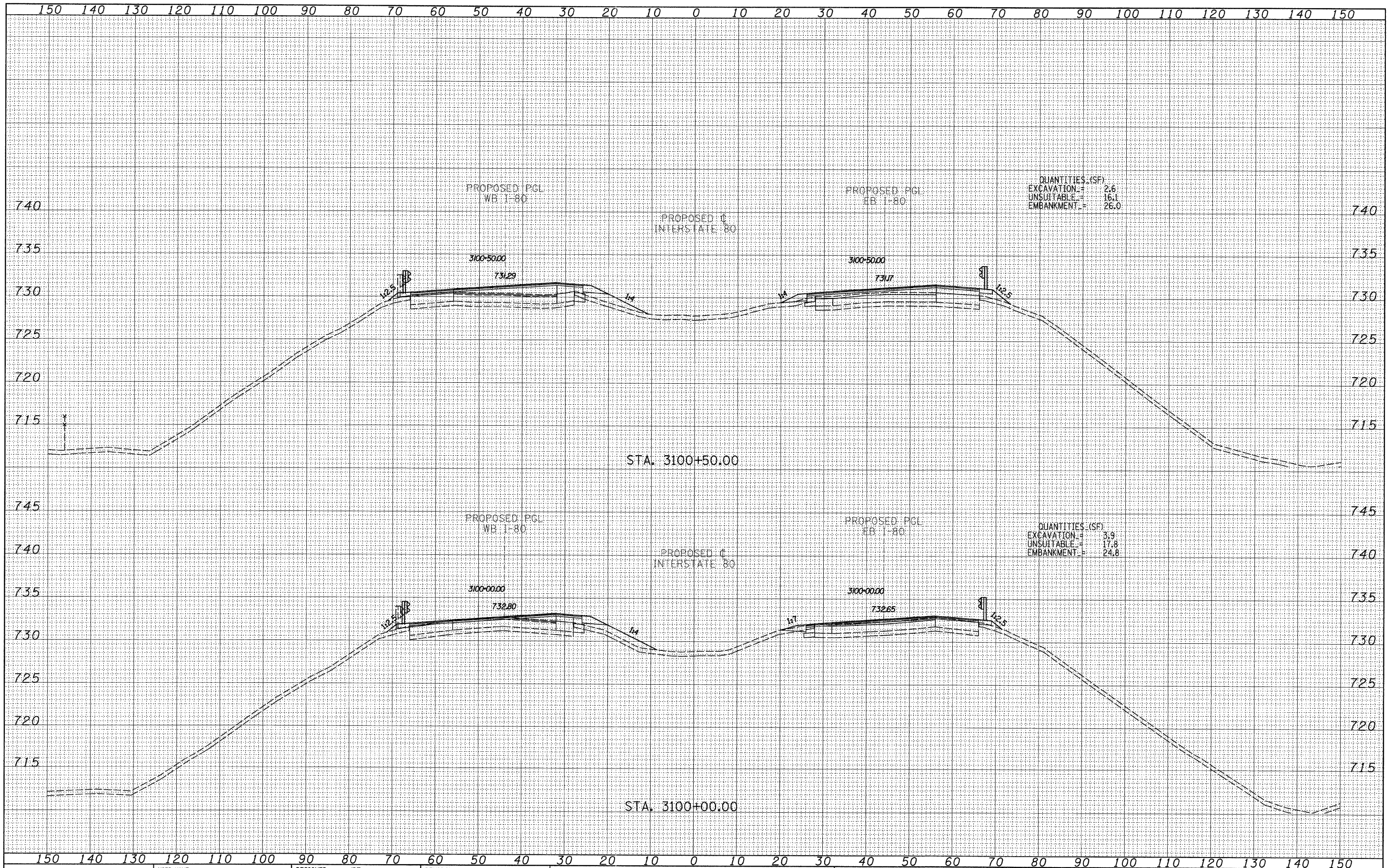


FINAL	DATE
SURVEY	BY
NOTE BOOK	
NO.	
DESIGNED	
DRAWN	
CHECKED	
DATE	

ORIGINAL	DATE
SURVEY	BY
NOTE BOOK	
NO.	
DESIGNED	
DRAWN	
CHECKED	
DATE	



QUANTITIES (SF)  
 EXCAVATION = 2.6  
 UNSUITABLE = 16.1  
 EMBANKMENT = 26.0

QUANTITIES (SF)  
 EXCAVATION = 3.9  
 UNSUITABLE = 17.8  
 EMBANKMENT = 24.8

**TYL** INTERNATIONAL

USER NAME =	DESIGNED - JDF	REVISED -
PLOT SCALE =	DRAWN - JDF	REVISED -
PLOT DATE =	CHECKED - JPM	REVISED -
	DATE - 9/7/2011	REVISED -

**STATE OF ILLINOIS  
 DEPARTMENT OF TRANSPORTATION**

**F.A.I. ROUTE 80 (I-80)  
 PROPOSED CROSS SECTIONS**

SCALE: 1" = 10' H  
 SHEET NO. OF SHEETS STA. 3100+00.00 TO STA. 3100+50.00

F.A.I. RTE.	SECTION	COUNTY	TOTAL SHEETS	SHEET NO.
80	(106-5)HBR-1.VBR(106-6)RS-3&I		249	191
BUREAU			CONTRACT NO. 66686	

P:\602429.1(I-80)\Road\602429.10\_A\36686-sh-t-xssh.t.dgn

FED. ROAD DIST. NO. ILLINOIS FED. AID PROJECT